

BMP-8 Polyclonal Antibody

Catalog No :	YT0504
Reactivity :	Human;Mouse
Applications :	IHC;IF;ELISA
Target :	BMP-8
Fields :	>>Cytokine-cytokine receptor interaction;>>TGF-beta signaling pathway;>>Hippo signaling pathway;>>Thermogenesis
Gene Name :	BMP8A/BMP8B
Protein Name :	Bone morphogenetic protein 8A/B
Human Gene Id :	656
Human Swiss Prot No :	P34820/Q7Z5Y6
Immunogen :	The antiserum was produced against synthesized peptide derived from human BMP-8. AA range:41-90
Specificity :	BMP-8 Polyclonal Antibody detects endogenous levels of BMP-8 protein.
Formulation :	Liquid in PBS containing 50% glycerol, 0.5% BSA and 0.02% sodium azide.
Source :	Polyclonal, Rabbit,IgG
Dilution :	IHC 1:100 - 1:300. ELISA: 1:40000.. IF 1:50-200
Purification :	The antibody was affinity-purified from rabbit antiserum by affinity-chromatography using epitope-specific immunogen.
Concentration :	1 mg/ml
Storage Stability :	-15°C to -25°C/1 year(Do not lower than -25°C)
Molecularweight :	45kD

Cell Pathway : Hedgehog;TGF-beta;

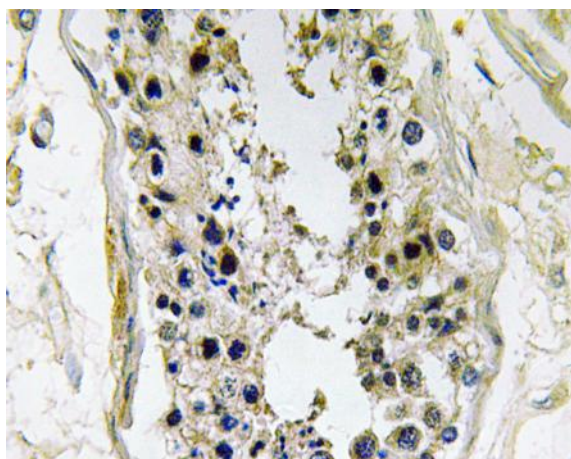
Background : This gene encodes a secreted ligand of the TGF-beta (transforming growth factor-beta) superfamily of proteins. Ligands of this family bind various TGF-beta receptors leading to recruitment and activation of SMAD family transcription factors that regulate gene expression. The encoded preproprotein is proteolytically processed to generate each subunit of the disulfide-linked homodimer. The encoded protein stimulates thermogenesis in brown adipose tissue. Expression of this gene may be downregulated in pancreatic cancer. This gene may have arose from a gene duplication event and its gene duplicate is also present on chromosome 1. [provided by RefSeq, Jul 2016],

Function : function:Induces cartilage and bone formation. May be the osteoinductive factor responsible for the phenomenon of epithelial osteogenesis. Plays a role in calcium regulation and bone homeostasis.,online information:Bone morphogenetic protein 8b entry,similarity:Belongs to the TGF-beta family.,subunit:Homodimer; disulfide-linked.,

Subcellular Location : Secreted .

Expression : Hippocampus,Testis,

Products Images



Immunohistochemistry analysis of BMP-8 antibody in paraffin-embedded human testis tissue.