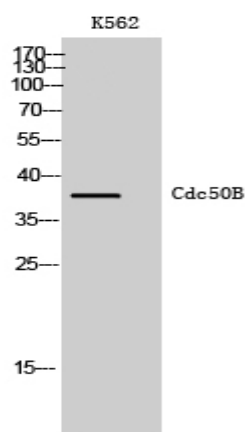


## Cdc50B Polyclonal Antibody

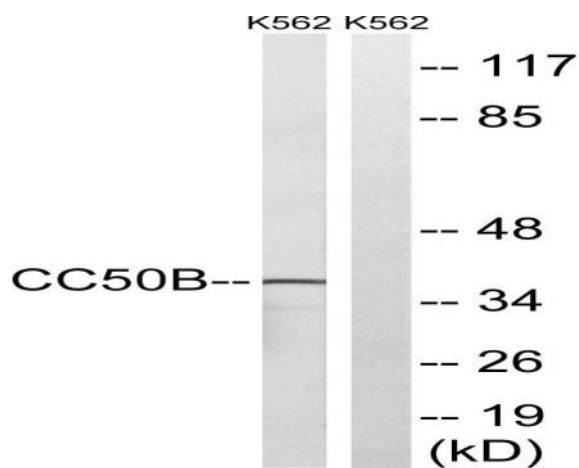
<b>Catalog No :</b>	YT0813
<b>Reactivity :</b>	Human;Mouse
<b>Applications :</b>	WB;ELISA
<b>Target :</b>	Cdc50B
<b>Gene Name :</b>	TMEM30B
<b>Protein Name :</b>	Cell cycle control protein 50B
<b>Human Gene Id :</b>	161291
<b>Human Swiss Prot No :</b>	Q3MIR4
<b>Mouse Gene Id :</b>	238257
<b>Mouse Swiss Prot No :</b>	Q8BHG3
<b>Immunogen :</b>	The antiserum was produced against synthesized peptide derived from human TMEM30B. AA range:91-140
<b>Specificity :</b>	Cdc50B Polyclonal Antibody detects endogenous levels of Cdc50B protein.
<b>Formulation :</b>	Liquid in PBS containing 50% glycerol, 0.5% BSA and 0.02% sodium azide.
<b>Source :</b>	Polyclonal, Rabbit,IgG
<b>Dilution :</b>	WB 1:500 - 1:2000. ELISA: 1:40000. Not yet tested in other applications.
<b>Purification :</b>	The antibody was affinity-purified from rabbit antiserum by affinity-chromatography using epitope-specific immunogen.
<b>Concentration :</b>	1 mg/ml
<b>Storage Stability :</b>	-15°C to -25°C/1 year(Do not lower than -25°C)

<b>Observed Band :</b>	<u>38kD</u>
<b>Background :</b>	<u>similarity:Belongs to the CDC50/LEM3 family.,</u>
<b>Function :</b>	<u>similarity:Belongs to the CDC50/LEM3 family.,</u>
<b>Subcellular Location :</b>	<u>Cell membrane ; Multi-pass membrane protein .</u>
<b>Expression :</b>	<u>Heart,Lung,</u>

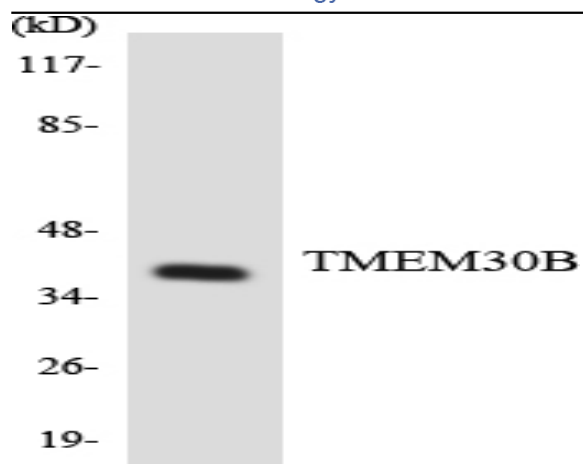
## Products Images



Western Blot analysis of K562 cells using Cdc50B Polyclonal Antibody



Western blot analysis of lysates from K562 cells, using TMEM30B Antibody. The lane on the right is blocked with the synthesized peptide.



Western blot analysis of the lysates from HeLa cells using TMEM30B antibody.