

## Cdc5L Polyclonal Antibody

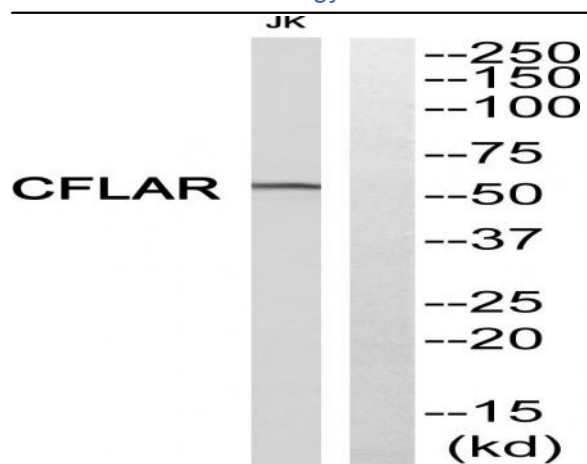
<b>Catalog No :</b>	YT0815
<b>Reactivity :</b>	Human;Mouse;Rat
<b>Applications :</b>	IHC;IF;ELISA
<b>Target :</b>	Cdc5L
<b>Fields :</b>	>>Spliceosome
<b>Gene Name :</b>	CDC5L
<b>Protein Name :</b>	Cell division cycle 5-like protein
<b>Human Gene Id :</b>	988
<b>Human Swiss Prot No :</b>	Q99459
<b>Mouse Gene Id :</b>	71702
<b>Mouse Swiss Prot No :</b>	Q6A068
<b>Rat Gene Id :</b>	85434
<b>Rat Swiss Prot No :</b>	O08837
<b>Immunogen :</b>	The antiserum was produced against synthesized peptide derived from human CDC5L. AA range:721-770
<b>Specificity :</b>	Cdc5L Polyclonal Antibody detects endogenous levels of Cdc5L protein.
<b>Formulation :</b>	Liquid in PBS containing 50% glycerol, 0.5% BSA and 0.02% sodium azide.
<b>Source :</b>	Polyclonal, Rabbit,IgG
<b>Dilution :</b>	IHC 1:100 - 1:300. ELISA: 1:5000.. IF 1:50-200

---

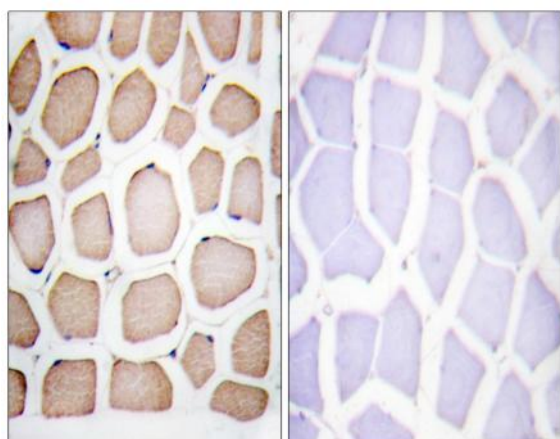
<b>Purification :</b>	The antibody was affinity-purified from rabbit antiserum by affinity-chromatography using epitope-specific immunogen.
<b>Concentration :</b>	1 mg/ml
<b>Storage Stability :</b>	-15°C to -25°C/1 year(Do not lower than -25°C)
<b>Molecularweight :</b>	92kD
<b>Cell Pathway :</b>	Spliceosome;
<b>Background :</b>	The protein encoded by this gene shares a significant similarity with Schizosaccharomyces pombe cdc5 gene product, which is a cell cycle regulator important for G2/M transition. This protein has been demonstrated to act as a positive regulator of cell cycle G2/M progression. It was also found to be an essential component of a non-snRNA spliceosome, which contains at least five additional protein factors and is required for the second catalytic step of pre-mRNA splicing. [provided by RefSeq, Jul 2008],
<b>Function :</b>	disease:A chromosomal aberration involving CDC5L is found in multicystic renal dysplasia. Translocation t(6;19)(p21;q13.1) with USF2.,function:DNA-binding protein involved in cell cycle control. May act as a transcription activator. Also seems to be involved in the second catalytic step of pre-mRNA splicing.,PTM:Phosphorylated; which enhances interaction with PPP1R8.,similarity:Belongs to the CEF1 family.,similarity:Contains 2 HTH myb-type DNA-binding domains.,subcellular location:May shuttle between cytoplasm and nucleus.,subunit:Homodimer. Interacts with DAPK3 (By similarity). Binds to DNA. Binds to adeno-pre-mRNA in an ATP-stimulated manner. Belongs to the spliceosome complex. Part of a spliceosomal 'core' complex consisting of CDC5L, PLRG1, SPF27, CCAP1, CCAP3 and CCAP6. Interacts with PLRG1, Lodestar/TTF2, and NIPP1/PPP1R8. Identified in the spliceosome C complex, at least composed
<b>Subcellular Location :</b>	Nucleus . Nucleus speckle . Cytoplasm . May shuttle between cytoplasm and nucleus. .
<b>Expression :</b>	Ubiquitously expressed in both fetal and adult tissues.

---

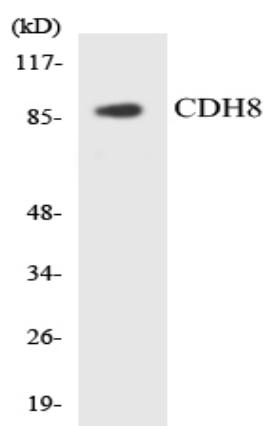
## Products Images



Western blot analysis of CDC5L Antibody. The lane on the right is blocked with the CDC5L peptide.



Immunohistochemistry analysis of paraffin-embedded human smooth muscle, using CDC5L Antibody. The lane on the right is blocked with the CDC5L peptide.



Western blot analysis of the lysates from HeLa cells using CDH8 antibody.