

## Cdc6 Polyclonal Antibody

<b>Catalog No :</b>	YT0816
<b>Reactivity :</b>	Human;Rat;Mouse;
<b>Applications :</b>	WB;IHC;IF;ELISA
<b>Target :</b>	Cdc6
<b>Fields :</b>	>>Cell cycle;>>Chemical carcinogenesis - receptor activation
<b>Gene Name :</b>	CDC6
<b>Protein Name :</b>	Cell division control protein 6 homolog
<b>Human Gene Id :</b>	990
<b>Human Swiss Prot No :</b>	Q99741
<b>Mouse Swiss Prot No :</b>	O89033
<b>Immunogen :</b>	The antiserum was produced against synthesized peptide derived from human CDC6. AA range:491-540
<b>Specificity :</b>	Cdc6 Polyclonal Antibody detects endogenous levels of Cdc6 protein.
<b>Formulation :</b>	Liquid in PBS containing 50% glycerol, 0.5% BSA and 0.02% sodium azide.
<b>Source :</b>	Polyclonal, Rabbit,IgG
<b>Dilution :</b>	WB 1:500 - 1:2000. IHC 1:100 - 1:300. ELISA: 1:20000.. IF 1:50-200
<b>Purification :</b>	The antibody was affinity-purified from rabbit antiserum by affinity-chromatography using epitope-specific immunogen.
<b>Concentration :</b>	1 mg/ml
<b>Storage Stability :</b>	-15°C to -25°C/1 year(Do not lower than -25°C)

**Observed Band :** 60kD

**Cell Pathway :** Cell\_Cycle\_G1S;Cell\_Cycle\_G2M\_DNA;

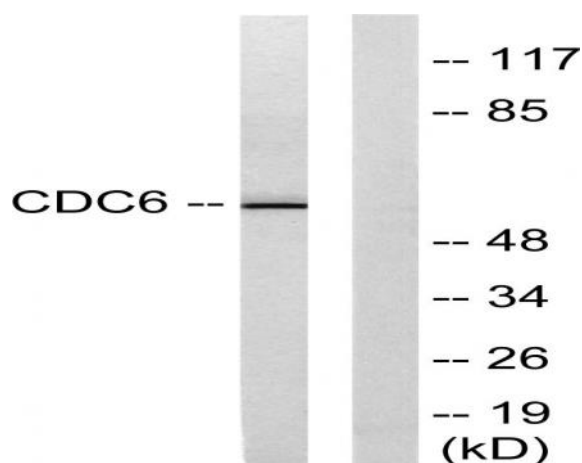
**Background :** The protein encoded by this gene is highly similar to *Saccharomyces cerevisiae* Cdc6, a protein essential for the initiation of DNA replication. This protein functions as a regulator at the early steps of DNA replication. It localizes in cell nucleus during cell cycle G1, but translocates to the cytoplasm at the start of S phase. The subcellular translocation of this protein during cell cycle is regulated through its phosphorylation by Cdks. Transcription of this protein was reported to be regulated in response to mitogenic signals through transcriptional control mechanism involving E2F proteins. [provided by RefSeq, Jul 2008],

**Function :** function:Involved in the initiation of DNA replication. Also participates in checkpoint controls that ensure DNA replication is completed before mitosis is initiated.,similarity:Belongs to the CDC6/cdc18 family.,subcellular location:The protein is nuclear in G1 and cytoplasmic in S-phase cells.,subunit:Interacts with PCNA, ORC1L, cyclin-CDK and HUWE1.,

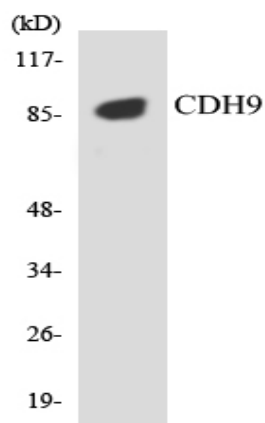
**Subcellular Location :** Nucleus . Cytoplasm . The protein is nuclear in G1 and cytoplasmic in S-phase cells (PubMed:9566895). .

**Expression :** Brain,Epithelium,

## Products Images



Western blot analysis of lysates from K562 cells, using CDC6 Antibody. The lane on the right is blocked with the synthesized peptide.



Western blot analysis of the lysates from HepG2 cells using CDH9 antibody.



Immunohistochemical analysis of paraffin-embedded human small intestinal carcinoma tissue. 1,primary Antibody was diluted at 1:200(4° overnight). 2, Sodium citrate pH 6.0 was used for antigen retrieval(>98° C,20min). 3,Secondary antibody was diluted at 1:200