

## CdcA3 Polyclonal Antibody

<b>Catalog No :</b>	YT0819
<b>Reactivity :</b>	Human;Mouse;Rat
<b>Applications :</b>	WB;IHC;IF;ELISA
<b>Target :</b>	CdcA3
<b>Gene Name :</b>	CDCA3
<b>Protein Name :</b>	Cell division cycle-associated protein 3
<b>Human Gene Id :</b>	83461
<b>Human Swiss Prot No :</b>	Q99618
<b>Mouse Gene Id :</b>	14793
<b>Mouse Swiss Prot No :</b>	Q99M54
<b>Rat Gene Id :</b>	297594
<b>Rat Swiss Prot No :</b>	Q68FW2
<b>Immunogen :</b>	The antiserum was produced against synthesized peptide derived from human CDCA3. AA range:219-268
<b>Specificity :</b>	CdcA3 Polyclonal Antibody detects endogenous levels of CdcA3 protein.
<b>Formulation :</b>	Liquid in PBS containing 50% glycerol, 0.5% BSA and 0.02% sodium azide.
<b>Source :</b>	Polyclonal, Rabbit,IgG
<b>Dilution :</b>	WB 1:500 - 1:2000. IHC 1:100 - 1:300. IF 1:200 - 1:1000. ELISA: 1:5000. Not yet tested in other applications.
<b>Purification :</b>	The antibody was affinity-purified from rabbit antiserum by affinity-chromatography using epitope-specific immunogen.

**Concentration :** 1 mg/ml

**Storage Stability :** -15°C to -25°C/1 year(Do not lower than -25°C)

**Observed Band :** 28kD

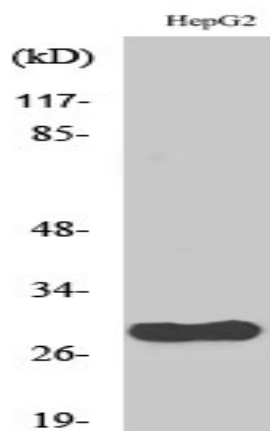
**Background :** domain:The KEN box is required for the association with the APC/C-Cdh1 complex.,function:F-box-like protein which is required for entry into mitosis. Acts by participating to E3 ligase complexes that mediate the ubiquitination and degradation of WEE1 kinase at G2/M phase.,pathway:Protein modification; protein ubiquitination.,PTM:Phosphorylated upon DNA damage, probably by ATM or ATR.,PTM:Ubiquitinated and degraded by the APC/C-Cdh1 complex.,subunit:Interacts with SKP1A. Part of a SCF (SKP1-cullin-F-box) protein ligase complex.,

**Function :** domain:The KEN box is required for the association with the APC/C-Cdh1 complex.,function:F-box-like protein which is required for entry into mitosis. Acts by participating to E3 ligase complexes that mediate the ubiquitination and degradation of WEE1 kinase at G2/M phase.,pathway:Protein modification; protein ubiquitination.,PTM:Phosphorylated upon DNA damage, probably by ATM or ATR.,PTM:Ubiquitinated and degraded by the APC/C-Cdh1 complex.,subunit:Interacts with SKP1A. Part of a SCF (SKP1-cullin-F-box) protein ligase complex.,

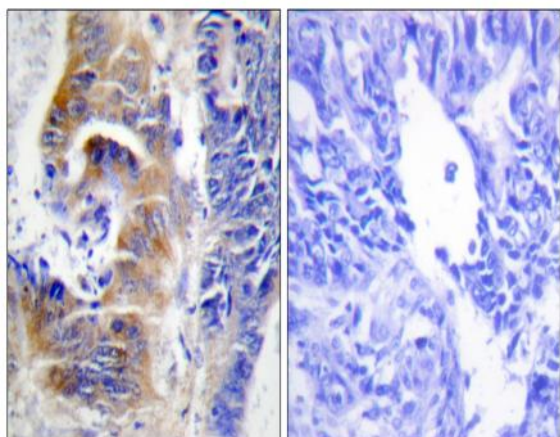
**Subcellular Location :** Cytoplasm, cytosol .

**Expression :** Brain,Placenta,Testis,Thymus,

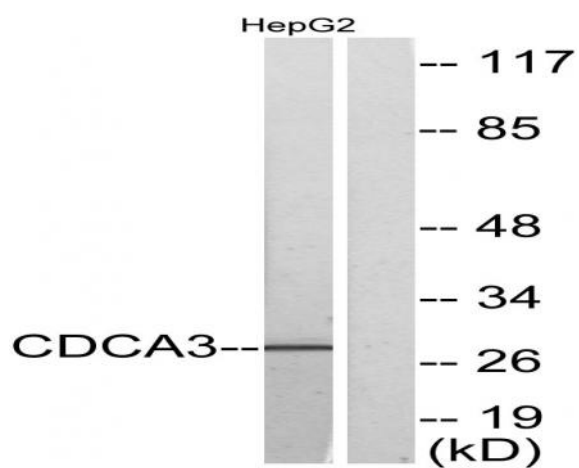
## Products Images



Western Blot analysis of various cells using CdcA3 Polyclonal Antibody



Immunohistochemistry analysis of paraffin-embedded human colon carcinoma tissue, using CDCA3 Antibody. The picture on the right is blocked with the synthesized peptide.



Western blot analysis of lysates from HepG2 cells, using CDCA3 Antibody. The lane on the right is blocked with the synthesized peptide.