

**BRCAA1 Polyclonal Antibody**

<b>Catalog No :</b>	YT0521
<b>Reactivity :</b>	Human;Mouse;Rat
<b>Applications :</b>	WB;ELISA
<b>Target :</b>	BRCAA1
<b>Gene Name :</b>	ARID4B
<b>Protein Name :</b>	AT-rich interactive domain-containing protein 4B
<b>Human Gene Id :</b>	51742
<b>Human Swiss Prot No :</b>	Q4LE39
<b>Mouse Gene Id :</b>	94246
<b>Mouse Swiss Prot No :</b>	A2CG63
<b>Rat Gene Id :</b>	84481
<b>Rat Swiss Prot No :</b>	Q9JKB5
<b>Immunogen :</b>	The antiserum was produced against synthesized peptide derived from human BRCAA1. AA range:761-810
<b>Specificity :</b>	BRCAA1 Polyclonal Antibody detects endogenous levels of BRCAA1 protein.
<b>Formulation :</b>	Liquid in PBS containing 50% glycerol, 0.5% BSA and 0.02% sodium azide.
<b>Source :</b>	Polyclonal, Rabbit,IgG
<b>Dilution :</b>	WB 1:500 - 1:2000. ELISA: 1:10000. Not yet tested in other applications.
<b>Purification :</b>	The antibody was affinity-purified from rabbit antiserum by affinity-chromatography using epitope-specific immunogen.

**Concentration :** 1 mg/ml

---

**Storage Stability :** -15°C to -25°C/1 year(Do not lower than -25°C)

---

**Observed Band :** 148kD

---

**Background :** This gene encodes a protein with sequence similarity to retinoblastoma-binding protein-1. The encoded protein is a subunit of the histone deacetylase-dependant SIN3A transcriptional corepressor complex, which functions in diverse cellular processes including proliferation, differentiation, apoptosis, oncogenesis, and cell fate determination. The gene product is recognized by IgG antibody isolated from a breast cancer patient and appears to be a molecular marker associated with a broad range of human malignancies. Alternate transcriptional splice variants encoding different isoforms have been characterized. [provided by RefSeq, Jul 2008],

---

**Function :** domain:The ARID domain is involved in stabilizing the mSin3A corepressor complex on DNA.,domain:The C-terminus mediates interaction with mSin3A corepressor complex.,domain:The N-terminus is involved in transcriptional repression by HDAC-independent mechanisms.,function:Acts as a transcriptional repressor. May function in the assembly and/or enzymatic activity of the Sin3A corepressor complex or in mediating interactions between the complex and other regulatory complexes.,similarity:Contains 1 ARID domain.,subcellular location:Cytoplasmic in breast cancer cells.,subunit:Component of a Sin3A corepressor complex consisting of SIN3A, SAP130, SUDS3/SAP45, SAP180, HDAC1 and HDAC2.,tissue specificity:Highly expressed in the testis and in breast, lung, colon, pancreatic and ovarian cancers. Expressed at low levels in the thymus, prostate and ovary.,

---

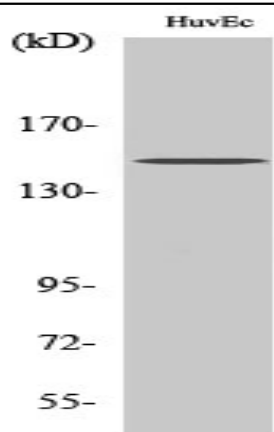
**Subcellular Location :** Nucleus . Cytoplasm . Cytoplasmic in breast cancer cells .

---

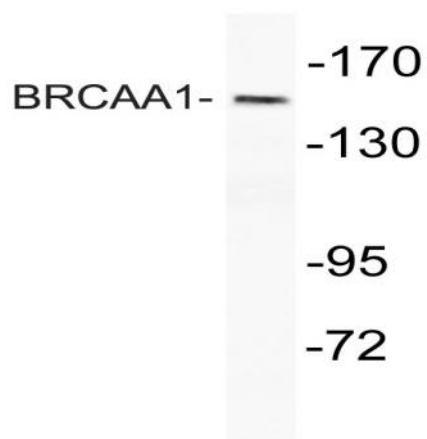
**Expression :** Highly expressed in the testis and in breast, lung, colon, pancreatic and ovarian cancers. Expressed at low levels in the thymus, prostate and ovary.

---

## Products Images



Western Blot analysis of various cells using BRCAA1 Polyclonal Antibody



Western blot analysis of lysate from HUVEC cells, using BRCAA1 antibody.