

**BRMS-1 Polyclonal Antibody**

<b>Catalog No :</b>	YT0527
<b>Reactivity :</b>	Human;Mouse;Rat
<b>Applications :</b>	WB;IHC;IF;ELISA
<b>Target :</b>	BRMS-1
<b>Gene Name :</b>	BRMS1
<b>Protein Name :</b>	Breast cancer metastasis-suppressor 1
<b>Human Gene Id :</b>	25855
<b>Human Swiss Prot No :</b>	Q9HCU9
<b>Mouse Gene Id :</b>	107392
<b>Mouse Swiss Prot No :</b>	Q99N20
<b>Rat Gene Id :</b>	1.00912e+008
<b>Rat Swiss Prot No :</b>	Q5M7T3
<b>Immunogen :</b>	The antiserum was produced against synthesized peptide derived from human BRMS1. AA range:21-70
<b>Specificity :</b>	BRMS-1 Polyclonal Antibody detects endogenous levels of BRMS-1 protein.
<b>Formulation :</b>	Liquid in PBS containing 50% glycerol, 0.5% BSA and 0.02% sodium azide.
<b>Source :</b>	Polyclonal, Rabbit,IgG
<b>Dilution :</b>	WB 1:500 - 1:2000. IHC 1:100 - 1:300. ELISA: 1:20000.. IF 1:50-200
<b>Purification :</b>	The antibody was affinity-purified from rabbit antiserum by affinity-chromatography using epitope-specific immunogen.

**Concentration :** 1 mg/ml

**Storage Stability :** -15°C to -25°C/1 year(Do not lower than -25°C)

**Observed Band :** 28kD

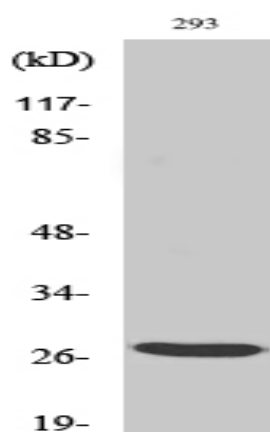
**Background :** This gene reduces the metastatic potential, but not the tumorigenicity, of human breast cancer and melanoma cell lines. The protein encoded by this gene localizes primarily to the nucleus and is a component of the mSin3a family of histone deacetylase complexes (HDAC). The protein contains two coiled-coil motifs and several imperfect leucine zipper motifs. Alternative splicing results in two transcript variants encoding different isoforms. [provided by RefSeq, Jul 2008],

**Function :** function:May be a mediator of metastasis suppression in breast carcinoma.,similarity:Belongs to the BRMS1 family.,tissue specificity:Expression levels are higher in term placentas than in early placentas. Low levels of expression observed in normal pregnancies and in molar pregnancies.,

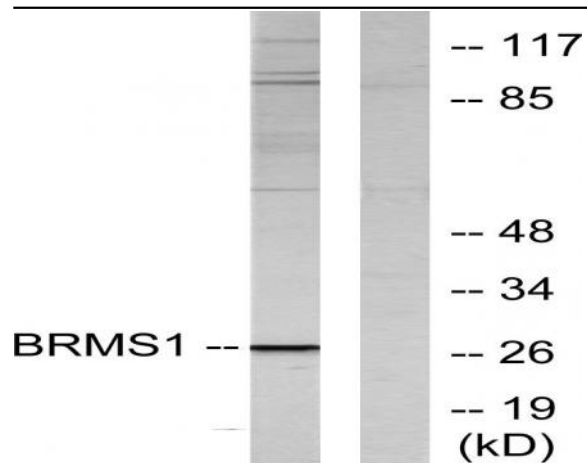
**Subcellular Location :** Nucleus. Cytoplasm. Predominantly nuclear.

**Expression :** Expression levels are higher in term placentas than in early placentas. Low levels of expression observed in normal pregnancies and in molar pregnancies.

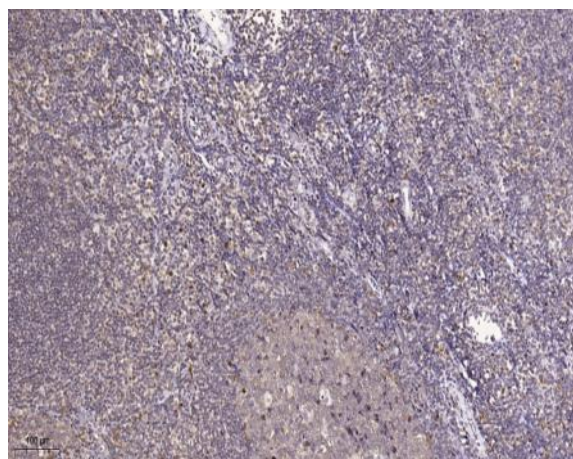
## Products Images



Western Blot analysis of various cells using BRMS-1 Polyclonal Antibody



Western blot analysis of lysates from 293 cells, using BRMS1 Antibody. The lane on the right is blocked with the synthesized peptide.



Immunohistochemical analysis of paraffin-embedded human tonsil. 1, Tris-EDTA, pH 9.0 was used for antigen retrieval. 2 Antibody was diluted at 1:200 (4° overnight). 3, Secondary antibody was diluted at 1:200 (room temperature, 45min).