

## CDKN3 Polyclonal Antibody

<b>Catalog No :</b>	YT0843
<b>Reactivity :</b>	Human;Mouse
<b>Applications :</b>	WB;IHC;IF;ELISA
<b>Target :</b>	CDKN3
<b>Gene Name :</b>	CDKN3
<b>Protein Name :</b>	Cyclin-dependent kinase inhibitor 3
<b>Human Gene Id :</b>	1033
<b>Human Swiss Prot No :</b>	Q16667
<b>Mouse Gene Id :</b>	72391
<b>Mouse Swiss Prot No :</b>	Q810P3
<b>Immunogen :</b>	The antiserum was produced against synthesized peptide derived from human CDKN3. AA range:31-80
<b>Specificity :</b>	CDKN3 Polyclonal Antibody detects endogenous levels of CDKN3 protein.
<b>Formulation :</b>	Liquid in PBS containing 50% glycerol, 0.5% BSA and 0.02% sodium azide.
<b>Source :</b>	Polyclonal, Rabbit,IgG
<b>Dilution :</b>	WB 1:500 - 1:2000. IHC 1:100 - 1:300. ELISA: 1:20000.. IF 1:50-200
<b>Purification :</b>	The antibody was affinity-purified from rabbit antiserum by affinity-chromatography using epitope-specific immunogen.
<b>Concentration :</b>	1 mg/ml
<b>Storage Stability :</b>	-15°C to -25°C/1 year(Do not lower than -25°C)

**Observed Band :** 23kD

**Cell Pathway :** Insulin Receptor

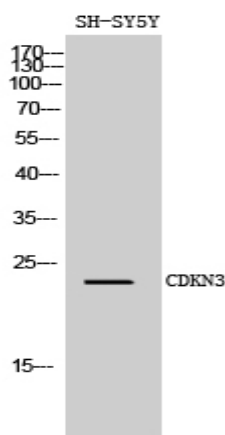
**Background :** The protein encoded by this gene belongs to the dual specificity protein phosphatase family. It was identified as a cyclin-dependent kinase inhibitor, and has been shown to interact with, and dephosphorylate CDK2 kinase, thus prevent the activation of CDK2 kinase. This gene was reported to be deleted, mutated, or overexpressed in several kinds of cancers. Alternatively spliced transcript variants encoding different isoforms have been found for this gene. [provided by RefSeq, Aug 2008],

**Function :** catalytic activity:A phosphoprotein + H(2)O = a protein + phosphate.,catalytic activity:Protein tyrosine phosphate + H(2)O = protein tyrosine + phosphate.,disease:Defects in CDKN3 are found in patients with hepatocellular carcinoma (HCC) [MIM:114550].,function:May play a role in cell cycle regulation. Dual specificity phosphatase active toward substrates containing either phosphotyrosine or phosphoserine residues. Dephosphorylates CDK2 at 'Thr-160' in a cyclin-dependent manner.,induction:Up-regulated in breast and prostate cancer cells.,similarity:Belongs to the protein-tyrosine phosphatase family.,subunit:Interacts with cyclin-dependent kinases such as CDC2, CDK2 and CDK3. Does not interact with CDK4. Interacts (via C-terminus) with phosphorylated CDK2 (via C-terminal helix). Interacts with MS4A3 (via C-terminus); the interaction enhances CDKN3 enzymatic activity.,

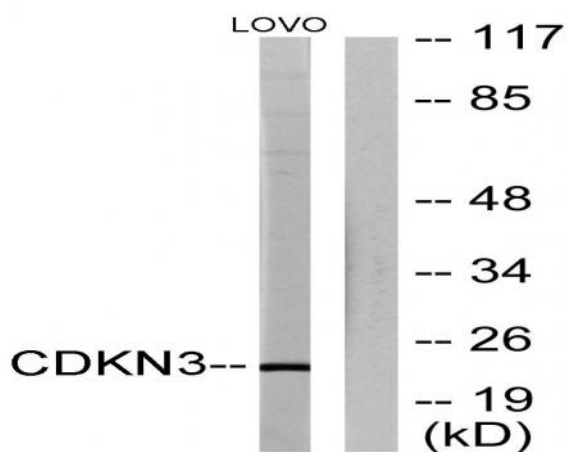
**Subcellular Location :** Cytoplasm, perinuclear region .

**Expression :** Retinoblastoma,

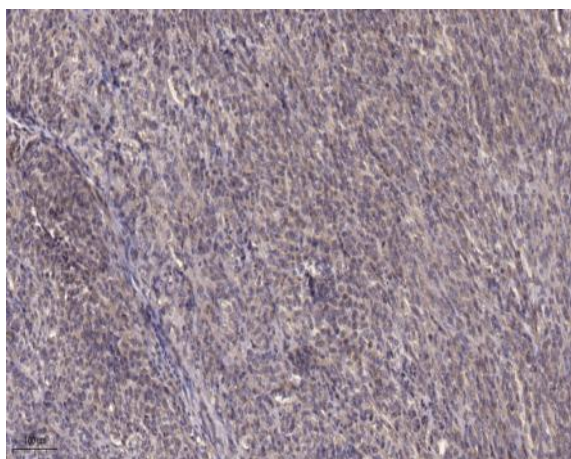
## Products Images



Western Blot analysis of SH-SY5Y cells using CDKN3 Polyclonal Antibody diluted at 1:1000



Western blot analysis of lysates from LOVO cells, using CDKN3 Antibody. The lane on the right is blocked with the synthesized peptide.



Immunohistochemical analysis of paraffin-embedded human Colon cancer. 1, Antibody was diluted at 1:200(4° overnight). 2, Tris-EDTA,pH9.0 was used for antigen retrieval. 3,Secondary antibody was diluted at 1:200(room temperature, 45min).