

## CDO Polyclonal Antibody

<b>Catalog No :</b>	YT0844
<b>Reactivity :</b>	Human;Rat;Mouse;
<b>Applications :</b>	IF;ELISA
<b>Target :</b>	CDO
<b>Fields :</b>	>>Hedgehog signaling pathway
<b>Gene Name :</b>	CDON
<b>Protein Name :</b>	Cell adhesion molecule-related/down-regulated by oncogenes
<b>Human Gene Id :</b>	50937
<b>Human Swiss Prot No :</b>	Q4KMG0
<b>Mouse Swiss Prot No :</b>	Q32MD9
<b>Immunogen :</b>	The antiserum was produced against synthesized peptide derived from human CDON. AA range:511-560
<b>Specificity :</b>	CDO Polyclonal Antibody detects endogenous levels of CDO protein.
<b>Formulation :</b>	Liquid in PBS containing 50% glycerol, 0.5% BSA and 0.02% sodium azide.
<b>Source :</b>	Polyclonal, Rabbit,IgG
<b>Dilution :</b>	IF 1:200 - 1:1000. ELISA: 1:10000. Not yet tested in other applications.
<b>Purification :</b>	The antibody was affinity-purified from rabbit antiserum by affinity-chromatography using epitope-specific immunogen.
<b>Concentration :</b>	1 mg/ml
<b>Storage Stability :</b>	-15°C to -25°C/1 year(Do not lower than -25°C)

**Molecularweight :** 139kD

---

**Background :** This gene encodes a cell surface receptor that is a member of the immunoglobulin superfamily. The encoded protein contains three fibronectin type III domains and five immunoglobulin-like C2-type domains. This protein is a member of a cell-surface receptor complex that mediates cell-cell interactions between muscle precursor cells and positively regulates myogenesis. [provided by RefSeq, Aug 2011],

---

**Function :** function:Component of a cell-surface receptor complex that mediates cell-cell interactions between muscle precursor cells. Promotes differentiation of myogenic cells.,PTM:N-glycosylated.,similarity:Contains 3 fibronectin type-III domains.,similarity:Contains 5 Ig-like C2-type (immunoglobulin-like) domains.,subunit:Part of a complex that contains BOC, CDON, NEO1, cadherins and CTNNB1. Interacts with NTN3.,

---

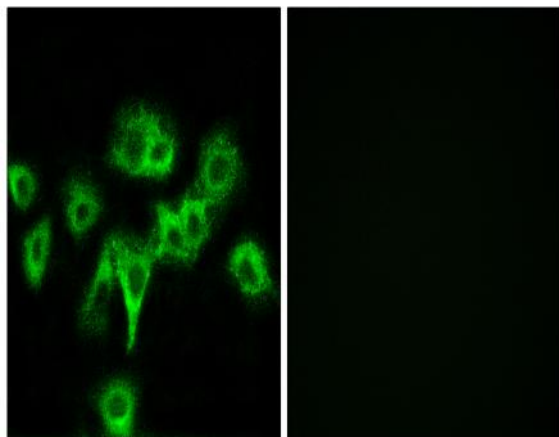
**Subcellular Location :** Cell membrane ; Single-pass membrane protein .

---

**Expression :** Fetal brain,Fetal lung,Placenta,

---

## Products Images



Immunofluorescence analysis of HeLa cells, using CDON Antibody. The picture on the right is blocked with the synthesized peptide.