

**BTF Polyclonal Antibody**

<b>Catalog No :</b>	YT0542
<b>Reactivity :</b>	Human;Mouse;Rat
<b>Applications :</b>	WB;ELISA
<b>Target :</b>	BCLAF1
<b>Gene Name :</b>	BCLAF1
<b>Protein Name :</b>	Bcl-2-associated transcription factor 1
<b>Human Gene Id :</b>	9774
<b>Human Swiss Prot No :</b>	Q9NYF8
<b>Mouse Gene Id :</b>	72567
<b>Mouse Swiss Prot No :</b>	Q8K019
<b>Immunogen :</b>	The antiserum was produced against synthesized peptide derived from human BCLAF1. AA range:281-330
<b>Specificity :</b>	BTF Polyclonal Antibody detects endogenous levels of BTF protein.
<b>Formulation :</b>	Liquid in PBS containing 50% glycerol, 0.5% BSA and 0.02% sodium azide.
<b>Source :</b>	Polyclonal, Rabbit,IgG
<b>Dilution :</b>	WB 1:500 - 1:2000. ELISA: 1:10000. Not yet tested in other applications.
<b>Purification :</b>	The antibody was affinity-purified from rabbit antiserum by affinity-chromatography using epitope-specific immunogen.
<b>Concentration :</b>	1 mg/ml
<b>Storage Stability :</b>	-15°C to -25°C/1 year(Do not lower than -25°C)

**Observed Band :** 106kD

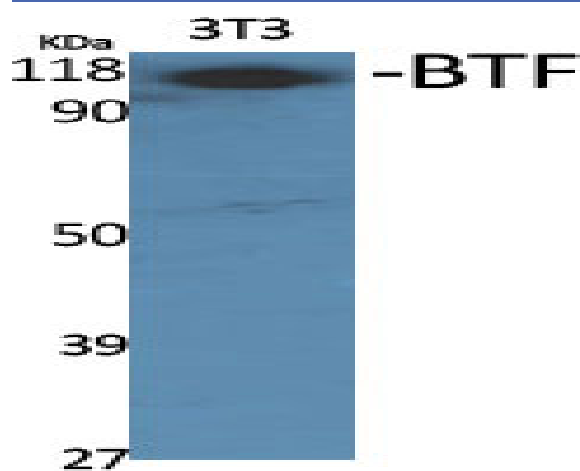
**Background :** This gene encodes a transcriptional repressor that interacts with several members of the BCL2 family of proteins. Overexpression of this protein induces apoptosis, which can be suppressed by co-expression of BCL2 proteins. The protein localizes to dot-like structures throughout the nucleus, and redistributes to a zone near the nuclear envelope in cells undergoing apoptosis. Multiple transcript variants encoding different isoforms have been found for this gene. [provided by RefSeq, Jul 2008],

**Function :** function:Death-promoting transcriptional repressor.,sequence caution:Contaminating sequence. Potential poly-A sequence.,subunit:Interacts with Bcl-2 related proteins, EMD, with the adenovirus E1B 19 kDa protein and with DNA.,tissue specificity:Ubiquitous.,

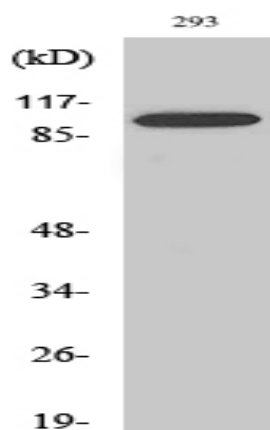
**Subcellular Location :** Cytoplasm. Nucleus. Nucleus speckle . Nucleus, nucleoplasm .

**Expression :** Ubiquitous.

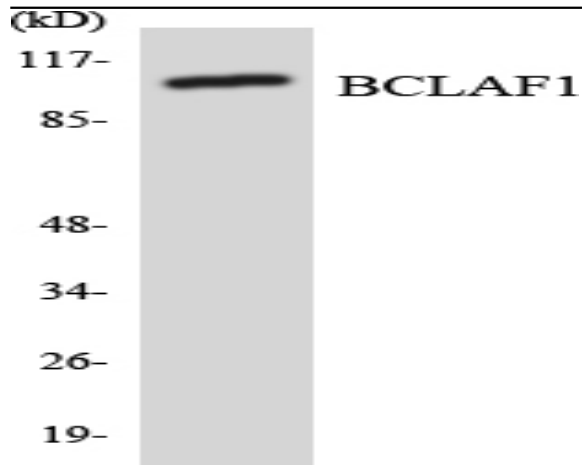
## Products Images



Western Blot analysis of various cells using BTF Polyclonal Antibody



Western Blot analysis of A549 cells using BTF Polyclonal Antibody



Western blot analysis of the lysates from HeLa cells using BCLAF1 antibody.