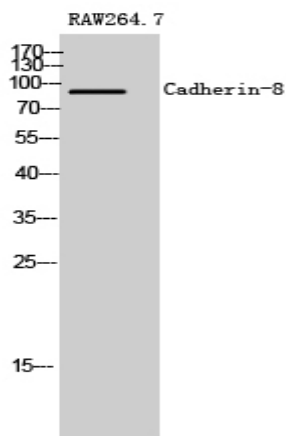


Cadherin-8 Polyclonal Antibody

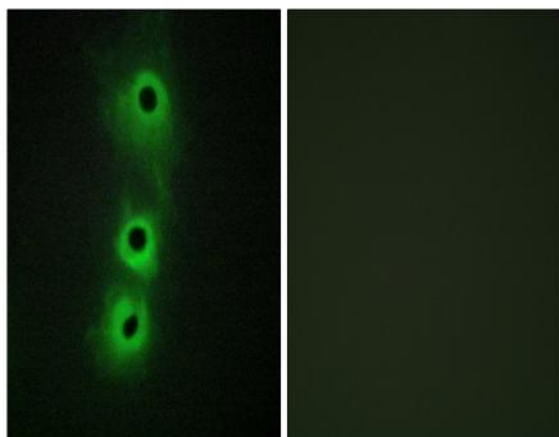
Catalog No :	YT0603
Reactivity :	Human;Mouse;Rat
Applications :	WB;IHC;IF;ELISA
Target :	Cadherin-8
Gene Name :	CDH8
Protein Name :	Cadherin-8
Human Gene Id :	1006
Human Swiss Prot No :	P55286
Mouse Gene Id :	12564
Mouse Swiss Prot No :	P97291
Rat Swiss Prot No :	O54800
Immunogen :	The antiserum was produced against synthesized peptide derived from human CDH8. AA range:491-540
Specificity :	Cadherin-8 Polyclonal Antibody detects endogenous levels of Cadherin-8 protein.
Formulation :	Liquid in PBS containing 50% glycerol, 0.5% BSA and 0.02% sodium azide.
Source :	Polyclonal, Rabbit,IgG
Dilution :	WB 1:500 - 1:2000. IHC 1:100 - 1:300. IF 1:200 - 1:1000. ELISA: 1:20000. Not yet tested in other applications.
Purification :	The antibody was affinity-purified from rabbit antiserum by affinity-chromatography using epitope-specific immunogen.

Concentration :	1 mg/ml
Storage Stability :	-15°C to -25°C/1 year(Do not lower than -25°C)
Observed Band :	90kD
Cell Pathway :	Adherens_Junction
Background :	<p>This gene encodes a type II classical cadherin from the cadherin superfamily, integral membrane proteins that mediate calcium-dependent cell-cell adhesion. Mature cadherin proteins are composed of a large N-terminal extracellular domain, a single membrane-spanning domain, and a small, highly conserved C-terminal cytoplasmic domain. The extracellular domain consists of 5 subdomains, each containing a cadherin motif, and appears to determine the specificity of the protein's homophilic cell adhesion activity. Type II (atypical) cadherins are defined based on their lack of a HAV cell adhesion recognition sequence specific to type I cadherins. This particular cadherin is expressed in brain and is putatively involved in synaptic adhesion, axon outgrowth and guidance. [provided by RefSeq, Jul 2008],</p>
Function :	<p>function:Cadherins are calcium dependent cell adhesion proteins. They preferentially interact with themselves in a homophilic manner in connecting cells; cadherins may thus contribute to the sorting of heterogeneous cell types.,similarity:Contains 5 cadherin domains.,tissue specificity:Mainly expressed in brain. Found in certain nerve cell lines, such as retinoblasts, glioma cells and neuroblasts.,</p>
Subcellular Location :	Cell membrane; Single-pass type I membrane protein.
Expression :	Mainly expressed in brain. Found in certain nerve cell lines, such as retinoblasts, glioma cells and neuroblasts.

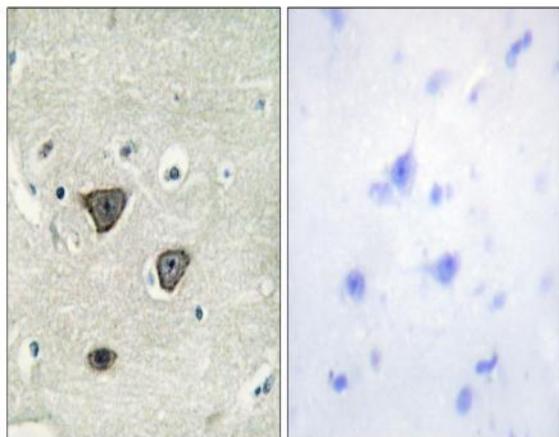
Products Images



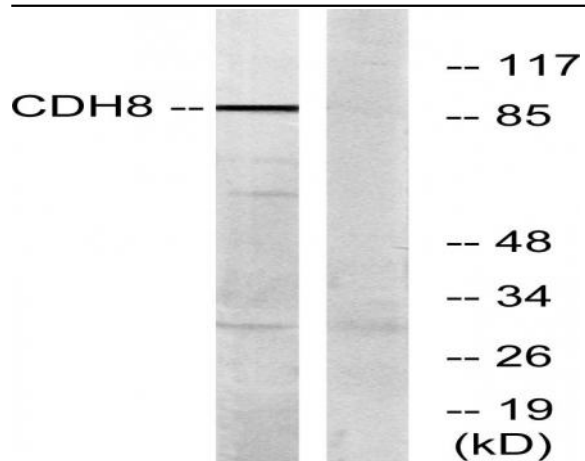
Western Blot analysis of RAW264.7 cells using Cadherin-8 Polyclonal Antibody



Immunofluorescence analysis of COS7 cells, using CDH8 Antibody. The picture on the right is blocked with the synthesized peptide.



Immunohistochemistry analysis of paraffin-embedded human brain tissue, using CDH8 Antibody. The picture on the right is blocked with the synthesized peptide.



Western blot analysis of lysates from RAW264.7 cells, using CDH8 Antibody. The lane on the right is blocked with the synthesized peptide.