

CARP Polyclonal Antibody

Catalog No :	YT0640
Reactivity :	Human;Mouse;Rat
Applications :	WB;IHC;IF;ELISA
Target :	CARP
Gene Name :	ANKRD1
Protein Name :	Ankyrin repeat domain-containing protein 1
Human Gene Id :	27063
Human Swiss Prot No :	Q15327
Mouse Gene Id :	107765
Mouse Swiss Prot No :	Q9CR42
Rat Gene Id :	27064
Rat Swiss Prot No :	Q8R560
Immunogen :	The antiserum was produced against synthesized peptide derived from human ANKRD1. AA range:231-280
Specificity :	CARP Polyclonal Antibody detects endogenous levels of CARP protein.
Formulation :	Liquid in PBS containing 50% glycerol, 0.5% BSA and 0.02% sodium azide.
Source :	Polyclonal, Rabbit,IgG
Dilution :	WB 1:500 - 1:2000. IHC 1:100 - 1:300. ELISA: 1:20000.. IF 1:50-200
Purification :	The antibody was affinity-purified from rabbit antiserum by affinity-chromatography using epitope-specific immunogen.

Concentration : 1 mg/ml

Storage Stability : -15°C to -25°C/1 year(Do not lower than -25°C)

Observed Band : 36kD

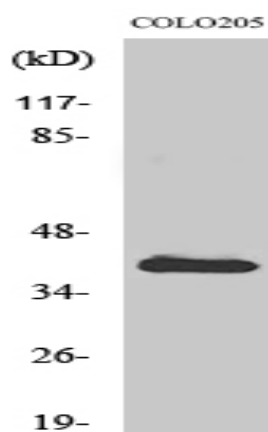
Background : ankyrin repeat domain 1 (ANKRD1) Homo sapiens The protein encoded by this gene is localized to the nucleus of endothelial cells and is induced by IL-1 and TNF-alpha stimulation. Studies in rat cardiomyocytes suggest that this gene functions as a transcription factor. Interactions between this protein and the sarcomeric proteins myopalladin and titin suggest that it may also be involved in the myofibrillar stretch-sensor system. [provided by RefSeq, Jul 2008],

Function : disease:Defects in ANKRD1 may be a cause of total anomalous pulmonary venous return (TAPVR) [MIM:106700]. TAPVR is a rare congenital heart disease (CHD) in which the pulmonary veins fail to connect to the left atrium during cardiac development, draining instead into either the right atrium or one of its venous tributaries. This disease accounts for 1.5% of all CHDs and has a prevalence of approximately 1 out of 15'000 live births.,function:May play an important role in endothelial cell activation. May act as a nuclear transcription factor that negatively regulates the expression of cardiac genes. Induction seems to be correlated with apoptotic cell death in hepatoma cells.,induction:By TNF, IL1A and parthenolide.,miscellaneous:A chromosomal aberration in the region of ANKRD1 may be a cause of total anomalous pulmonary venous return (TAPVR) [MIM:106700]. Translocation t(10;21)(q23.31;q11).

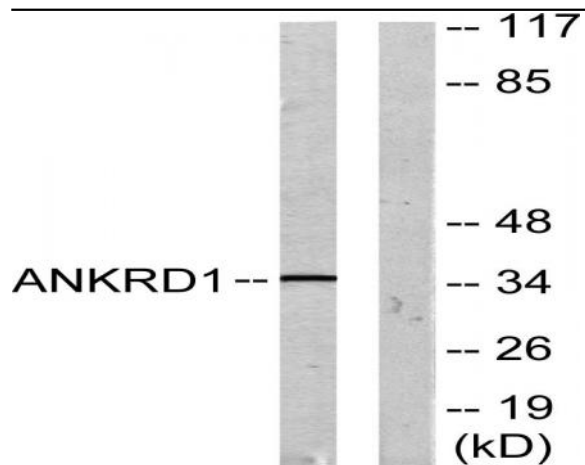
Subcellular Location : Nucleus .

Expression : Mainly expressed in activated vascular endothelial cells. To a lower extent, also expressed in hepatoma cells.

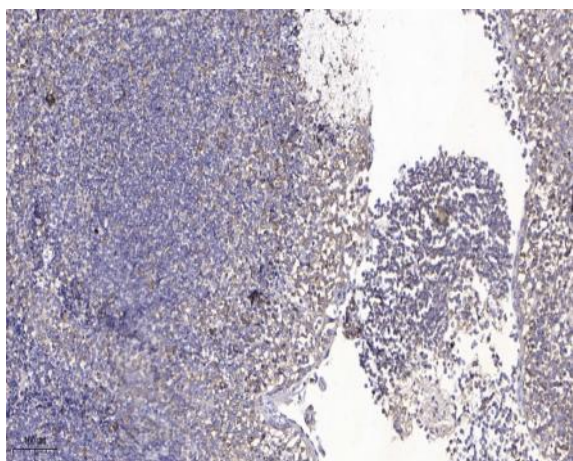
Products Images



Western Blot analysis of various cells using CARP Polyclonal Antibody



Western blot analysis of lysates from COLO205 cells, using ANKRD1 Antibody. The lane on the right is blocked with the synthesized peptide.



Immunohistochemical analysis of paraffin-embedded human tonsil. 1, Antibody was diluted at 1:200(4° overnight). 2, Tris-EDTA,pH9.0 was used for antigen retrieval. 3,Secondary antibody was diluted at 1:200(room temperature, 45min).