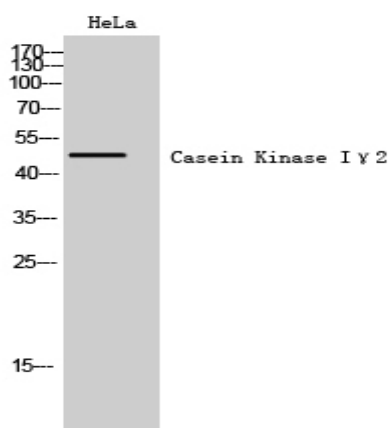


Casein Kinase I γ 2 Polyclonal Antibody

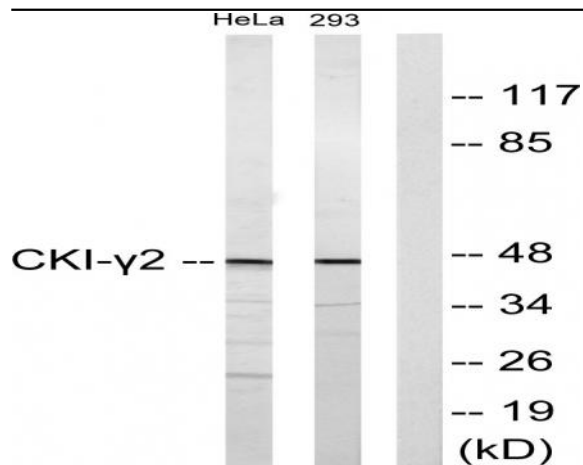
Catalog No :	YT0649
Reactivity :	Human;Mouse;Rat
Applications :	WB;IHC;IF;ELISA
Target :	Casein Kinase I γ 2
Fields :	>>Hedgehog signaling pathway
Gene Name :	CSNK1G2
Protein Name :	Casein kinase I isoform gamma-2
Human Gene Id :	1455
Human Swiss Prot No :	P78368
Mouse Gene Id :	103236
Mouse Swiss Prot No :	Q8BVP5
Rat Gene Id :	65278
Rat Swiss Prot No :	Q62762
Immunogen :	The antiserum was produced against synthesized peptide derived from human CKI-gamma2. AA range:10-59
Specificity :	Casein Kinase I γ 2 Polyclonal Antibody detects endogenous levels of Casein Kinase I γ 2 protein.
Formulation :	Liquid in PBS containing 50% glycerol, 0.5% BSA and 0.02% sodium azide.
Source :	Polyclonal, Rabbit,IgG
Dilution :	WB 1:500 - 1:2000. IHC 1:100 - 1:300. IF 1:200 - 1:1000. ELISA: 1:10000. Not yet tested in other applications.

Purification :	The antibody was affinity-purified from rabbit antiserum by affinity-chromatography using epitope-specific immunogen.
Concentration :	1 mg/ml
Storage Stability :	-15°C to -25°C/1 year(Do not lower than -25°C)
Observed Band :	47kD
Cell Pathway :	Hedgehog;
Background :	catalytic activity:ATP + a protein = ADP + a phosphoprotein.,function:Casein kinases are operationally defined by their preferential utilization of acidic proteins such as caseins as substrates. It can phosphorylate a large number of proteins. Participates in Wnt signaling.,PTM:Autophosphorylated.,similarity:Belongs to the protein kinase superfamily. CK1 Ser/Thr protein kinase family. Casein kinase I subfamily.,similarity:Contains 1 protein kinase domain.,subunit:Monomer.,tissue specificity:Testis.,
Function :	catalytic activity:ATP + a protein = ADP + a phosphoprotein.,function:Casein kinases are operationally defined by their preferential utilization of acidic proteins such as caseins as substrates. It can phosphorylate a large number of proteins. Participates in Wnt signaling.,PTM:Autophosphorylated.,similarity:Belongs to the protein kinase superfamily. CK1 Ser/Thr protein kinase family. Casein kinase I subfamily.,similarity:Contains 1 protein kinase domain.,subunit:Monomer.,tissue specificity:Testis.,
Subcellular Location :	Cytoplasm, cell cortex . Cytoplasm .
Expression :	Testis.

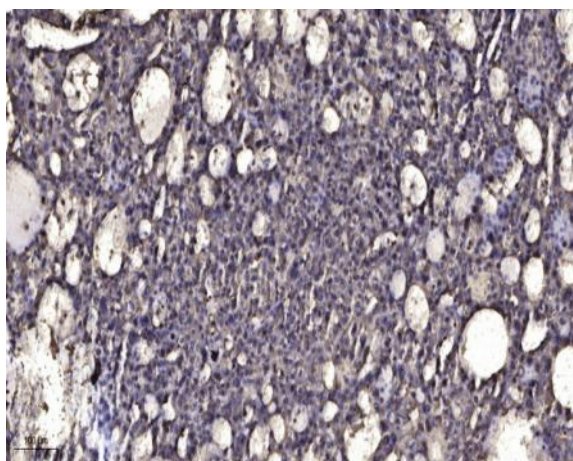
Products Images



Western Blot analysis of HeLa cells using Casein Kinase I γ 2 Polyclonal Antibody



Western blot analysis of lysates from HeLa and 293 cells, using CKI-gamma2 Antibody. The lane on the right is blocked with the synthesized peptide.



Immunohistochemical analysis of paraffin-embedded human liver cancer. 1, Antibody was diluted at 1:200(4° overnight). 2, Tris-EDTA,pH9.0 was used for antigen retrieval. 3,Secondary antibody was diluted at 1:200(room temperature, 45min).