

CREB-BP Polyclonal Antibody

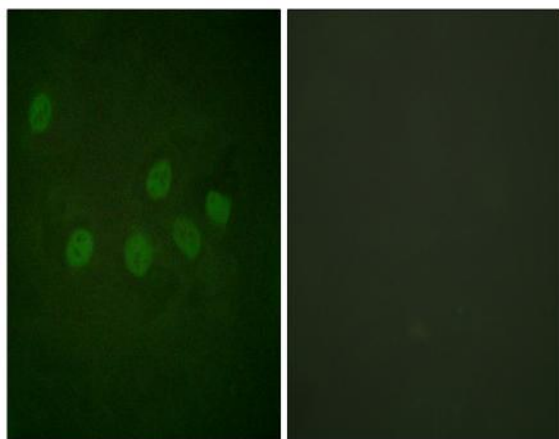
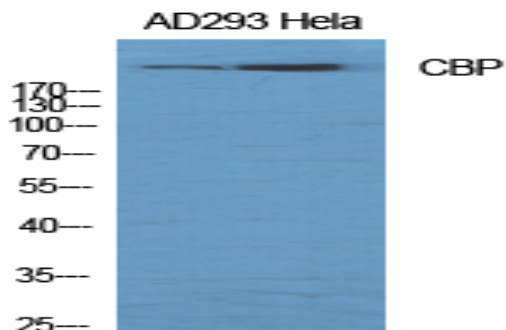
Catalog No :	YT0693
Reactivity :	Human;Mouse;Rat
Applications :	WB;IHC;IF;ELISA
Target :	CBP
Fields :	>>Viral life cycle - HIV-1;>>cAMP signaling pathway;>>HIF-1 signaling pathway;>>FoxO signaling pathway;>>Cell cycle;>>Wnt signaling pathway;>>Notch signaling pathway;>>TGF-beta signaling pathway;>>Adherens junction;>>JAK-STAT signaling pathway;>>Long-term potentiation;>>Melanogenesis;>>Thyroid hormone signaling pathway;>>Glucagon signaling pathway;>>Growth hormone synthesis, secretion and action;>>Huntington disease;>>Tuberculosis;>>Hepatitis B;>>Influenza A;>>Human papillomavirus infection;>>Human T-cell leukemia virus 1 infection;>>Kaposi sarcoma-associated herpesvirus infection;>>Pathways in cancer;>>Viral carcinogenesis;>>MicroRNAs in cancer;>>Renal cell carcinoma;>>Prostate cancer
Gene Name :	CREBBP
Protein Name :	CREB-binding protein
Human Gene Id :	1387
Human Swiss Prot No :	Q92793
Mouse Swiss Prot No :	P45481
Rat Swiss Prot No :	Q6JHU9
Immunogen :	The antiserum was produced against synthesized peptide derived from human CBP. AA range:1501-1550
Specificity :	CBP Polyclonal Antibody detects endogenous levels of CBP protein.
Formulation :	Liquid in PBS containing 50% glycerol, 0.5% BSA and 0.02% sodium azide.

Source :	Polyclonal, Rabbit,IgG
Dilution :	WB 1:500 - 1:2000. IHC 1:100 - 1:300. IF 1:200 - 1:1000. ELISA: 1:20000. Not yet tested in other applications.
Purification :	The antibody was affinity-purified from rabbit antiserum by affinity-chromatography using epitope-specific immunogen.
Concentration :	1 mg/ml
Storage Stability :	-15°C to -25°C/1 year(Do not lower than -25°C)
Observed Band :	265kD
Cell Pathway :	Regulates Angiogenesis; Protein_Acetylation
Background :	<p>This gene is ubiquitously expressed and is involved in the transcriptional coactivation of many different transcription factors. First isolated as a nuclear protein that binds to cAMP-response element binding protein (CREB), this gene is now known to play critical roles in embryonic development, growth control, and homeostasis by coupling chromatin remodeling to transcription factor recognition. The protein encoded by this gene has intrinsic histone acetyltransferase activity and also acts as a scaffold to stabilize additional protein interactions with the transcription complex. This protein acetylates both histone and non-histone proteins. This protein shares regions of very high sequence similarity with protein p300 in its bromodomain, cysteine-histidine-rich regions, and histone acetyltransferase domain. Mutations in this gene cause Rubinstein-Taybi syndrome (RTS). Chromosomal translocations invo</p>
Function :	<p>catalytic activity:Acetyl-CoA + histone = CoA + acetylhistone.,disease:Chromosomal aberrations involving CREBBP may be a cause of acute myeloid leukemias. Translocation t(8;16)(p11;p13) with MYST3/MOZ; translocation t(11;16)(q23;p13.3) with MLL/HRX; translocation t(10;16)(q22;p13) with MYST4/MORF. MYST3-CREBBP may induce leukemia by inhibiting RUNX1-mediated transcription.,disease:Defects in CREBBP are a cause of Rubinstein-Taybi syndrome (RSTS) [MIM:180849]. RSTS is an autosomal dominant disorder characterized by craniofacial abnormalities, broad thumbs, broad big toes, mental retardation and a propensity for development of malignancies.,domain:The KIX domain mediates binding to HIV-1 Tat.,function:Acetylates histones, giving a specific tag for transcriptional activation. Also acetylates non-histone proteins, like NCOA3 coactivator. Binds specifically to phosphorylated CREB and enhances</p>
Subcellular Location :	<p>Cytoplasm. Nucleus. Recruited to nuclear bodies by SS18L1/CREST. In the presence of ALX1 relocalizes from the cytoplasm to the nucleus.</p> <p>Acute myeloid leukemia,Brain,Epithelium,</p>

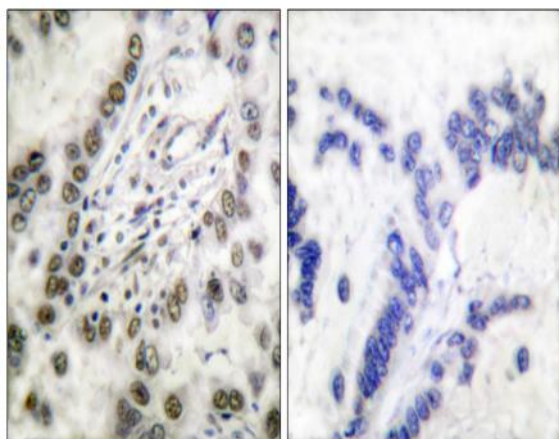
Expression :

Products Images

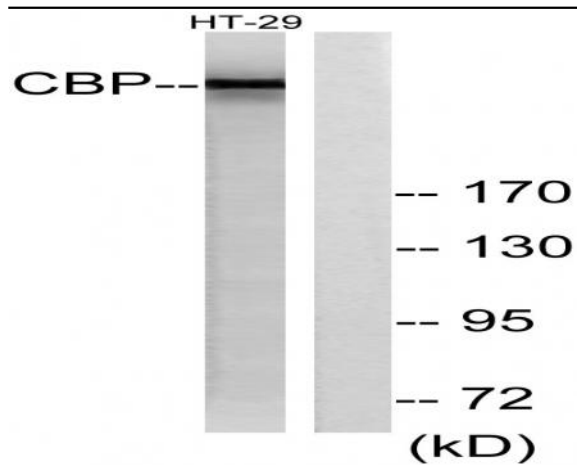
Western Blot analysis of various cells using CBP Polyclonal Antibody diluted at 1:1000



Immunofluorescence analysis of HeLa cells, using CBP Antibody. The picture on the right is blocked with the synthesized peptide.



Immunohistochemistry analysis of paraffin-embedded human lung carcinoma tissue, using CBP Antibody. The picture on the right is blocked with the synthesized peptide.



Western blot analysis of lysates from HT-29 cells, treated with calyculinA 50ng/ml 30', using CBP Antibody. The lane on the right is blocked with the synthesized peptide.