

CBP20 Polyclonal Antibody

| | |
|------------------------------|---|
| Catalog No : | YT0696 |
| Reactivity : | Human;Mouse |
| Applications : | WB;IHC;IF;ELISA |
| Target : | CBP20 |
| Fields : | >>Nucleocytoplasmic transport;>>mRNA surveillance pathway;>>Spliceosome |
| Gene Name : | NCBP2 |
| Protein Name : | Nuclear cap-binding protein subunit 2 |
| Human Gene Id : | 22916 |
| Human Swiss Prot No : | P52298 |
| Mouse Gene Id : | 68092 |
| Mouse Swiss Prot No : | Q9CQ49 |
| Immunogen : | The antiserum was produced against synthesized peptide derived from human NCBP2. AA range:10-59 |
| Specificity : | CBP20 Polyclonal Antibody detects endogenous levels of CBP20 protein. |
| Formulation : | Liquid in PBS containing 50% glycerol, 0.5% BSA and 0.02% sodium azide. |
| Source : | Polyclonal, Rabbit,IgG |
| Dilution : | WB 1:500 - 1:2000. IHC 1:100 - 1:300. IF 1:200 - 1:1000. ELISA: 1:5000. Not yet tested in other applications. |
| Purification : | The antibody was affinity-purified from rabbit antiserum by affinity-chromatography using epitope-specific immunogen. |
| Concentration : | 1 mg/ml |

Storage Stability : -15°C to -25°C/1 year(Do not lower than -25°C)

Observed Band : 18kD

Cell Pathway : Spliceosome;

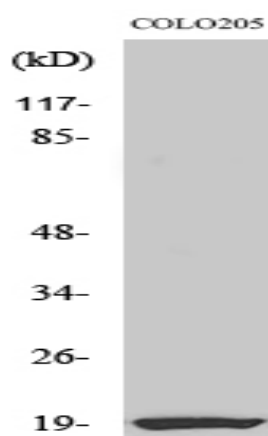
Background : The product of this gene is a component of the nuclear cap-binding protein complex (CBC), which binds to the monomethylated 5' cap of nascent pre-mRNA in the nucleoplasm. The encoded protein has an RNP domain commonly found in RNA binding proteins, and contains the cap-binding activity. The CBC promotes pre-mRNA splicing, 3'-end processing, RNA nuclear export, and nonsense-mediated mRNA decay. Multiple transcript variants encoding different isoforms have been found for this gene. [provided by RefSeq, Jul 2008],

Function : function:Involved in mediating U snRNA export from the nucleus. Binds to 5' capped mRNA.,PTM:Phosphorylated upon DNA damage, probably by ATM or ATR.,similarity:Belongs to the RRM NCBP2 family.,similarity:Contains 1 RRM (RNA recognition motif) domain.,subunit:Found in a U snRNA export complex with RNUXA/PHAX, NCBP1, NCBP2, RAN, XPO1 and m7G-capped RNA (By similarity). Heterodimer with NCBP1. Is part of the exon junction complex (EJC) containing NCBP1, NCBP2, RNPS1, RBM8A, SRRM1, NXF1, UPF3B, UPF2, THOC4 and/or REFBP2.,

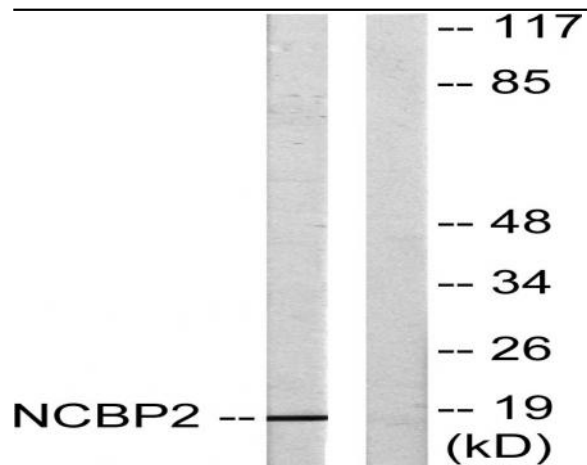
Subcellular Location : Nucleus . Cytoplasm .

Expression : Cervix,Cervix carcinoma,Human small intestine,

Products Images



Western Blot analysis of various cells using CBP20 Polyclonal Antibody



Western blot analysis of lysates from COLO205 cells, using NCBP2 Antibody. The lane on the right is blocked with the synthesized peptide.



Immunohistochemical analysis of paraffin-embedded human tonsil. 1, Tris-EDTA, pH 9.0 was used for antigen retrieval. 2 Antibody was diluted at 1:200 (4° overnight). 3, Secondary antibody was diluted at 1:200 (room temperature, 45min).