

**CBX6 Polyclonal Antibody**

<b>Catalog No :</b>	YT0699
<b>Reactivity :</b>	Human;Mouse;Rat
<b>Applications :</b>	WB;IHC;IF;ELISA
<b>Target :</b>	CBX6
<b>Gene Name :</b>	CBX6
<b>Protein Name :</b>	Chromobox protein homolog 6
<b>Human Gene Id :</b>	23466
<b>Human Swiss Prot No :</b>	O95503
<b>Mouse Gene Id :</b>	494448
<b>Mouse Swiss Prot No :</b>	Q9DBY5
<b>Immunogen :</b>	The antiserum was produced against synthesized peptide derived from human CBX6. AA range:10-59
<b>Specificity :</b>	CBX6 Polyclonal Antibody detects endogenous levels of CBX6 protein.
<b>Formulation :</b>	Liquid in PBS containing 50% glycerol, 0.5% BSA and 0.02% sodium azide.
<b>Source :</b>	Polyclonal, Rabbit,IgG
<b>Dilution :</b>	WB 1:500 - 1:2000. IHC 1:100 - 1:300. ELISA: 1:20000.. IF 1:50-200
<b>Purification :</b>	The antibody was affinity-purified from rabbit antiserum by affinity-chromatography using epitope-specific immunogen.
<b>Concentration :</b>	1 mg/ml
<b>Storage Stability :</b>	-15°C to -25°C/1 year(Do not lower than -25°C)

**Observed Band :** 44kD

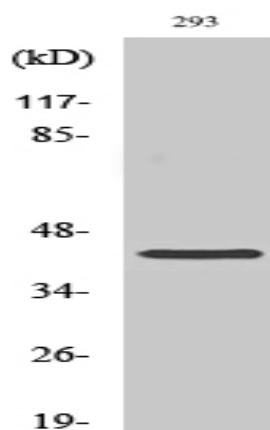
**Background :** function:Involved in maintaining the transcriptionally repressive state of genes. Modifies chromatin, rendering it heritably changed in its expressibility.,similarity:Contains 1 chromo domain.,subunit:Component of the chromatin-associated polycomb complex (PcG).

**Function :** function:Involved in maintaining the transcriptionally repressive state of genes. Modifies chromatin, rendering it heritably changed in its expressibility.,similarity:Contains 1 chromo domain.,subunit:Component of the chromatin-associated polycomb complex (PcG).

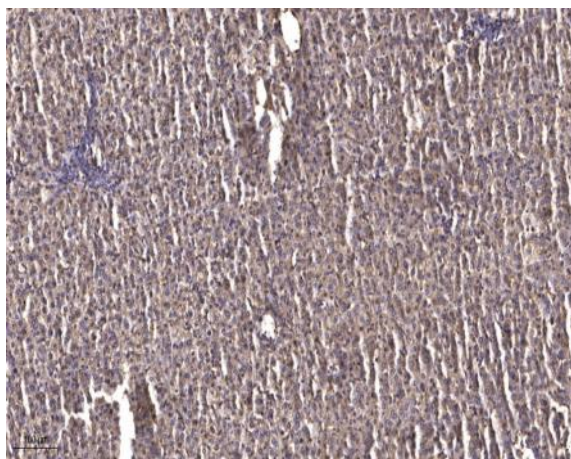
**Subcellular Location :** Nucleus . Chromosome . Uniformly distributed in the nucleoplasm (PubMed:18927235). Localizes to the inactivated X chromosome in females (By similarity).

**Expression :** Lung,Uterus,

## Products Images



Western Blot analysis of various cells using CBX6 Polyclonal Antibody cells nucleus extracted by Minute TM Cytoplasmic and Nuclear Fractionation kit (SC-003, Inventbiotech, MN, USA).



Immunohistochemical analysis of paraffin-embedded human liver cancer. 1, Antibody was diluted at 1:200(4° overnight). 2, Tris-EDTA,pH9.0 was used for antigen retrieval. 3,Secondary antibody was diluted at 1:200(room temperature, 45min).