

**CNTD2 Polyclonal Antibody**

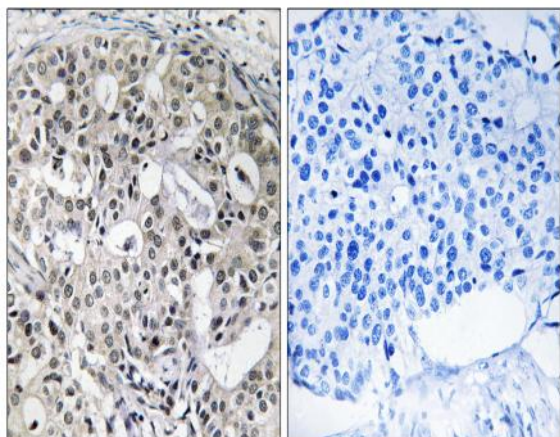
<b>Catalog No :</b>	YT1005
<b>Reactivity :</b>	Human;Rat;Mouse;
<b>Applications :</b>	IHC;IF;ELISA
<b>Target :</b>	CNTD2
<b>Gene Name :</b>	CNTD2
<b>Protein Name :</b>	Cyclin N-terminal domain-containing protein 2
<b>Human Gene Id :</b>	79935
<b>Human Swiss Prot No :</b>	Q9H8S5
<b>Immunogen :</b>	The antiserum was produced against synthesized peptide derived from human CNTD2. AA range:51-100
<b>Specificity :</b>	CNTD2 Polyclonal Antibody detects endogenous levels of CNTD2 protein.
<b>Formulation :</b>	Liquid in PBS containing 50% glycerol, 0.5% BSA and 0.02% sodium azide.
<b>Source :</b>	Polyclonal, Rabbit,IgG
<b>Dilution :</b>	IHC 1:100 - 1:300. ELISA: 1:40000.. IF 1:50-200
<b>Purification :</b>	The antibody was affinity-purified from rabbit antiserum by affinity-chromatography using epitope-specific immunogen.
<b>Concentration :</b>	1 mg/ml
<b>Storage Stability :</b>	-15°C to -25°C/1 year(Do not lower than -25°C)
<b>Molecularweight :</b>	17kD
<b>Background :</b>	similarity:Belongs to the cyclin family.,similarity:Contains 1 cyclin N-terminal domain.,

**Function :** similarity:Belongs to the cyclin family.,similarity:Contains 1 cyclin N-terminal domain.,

**Subcellular Location :** Nucleus .

**Expression :** Expression is induced in lung and colon cancer cells.

## Products Images



Immunohistochemistry analysis of paraffin-embedded human breast carcinoma, using CNTD2 Antibody. The picture on the right is blocked with the synthesized peptide.