

## CD5 Polyclonal Antibody

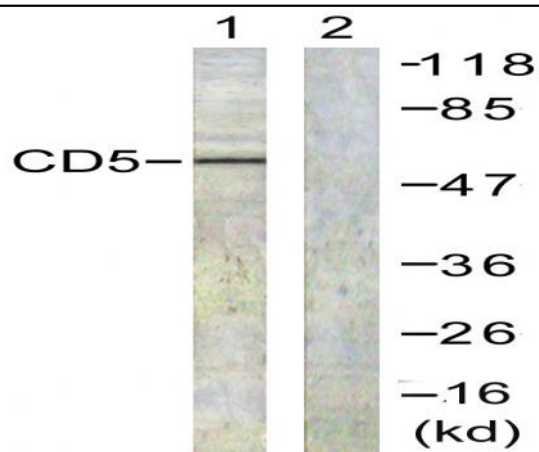
|                              |   |
|------------------------------|---|
| <b>Catalog No :</b>          | YT0766  |
| <b>Reactivity :</b>          | Human;Mouse;Rat   |
| <b>Applications :</b>        | WB;ELISA  |
| <b>Target :</b>              | CD5   |
| <b>Fields :</b>              | >>Hematopoietic cell lineage  |
| <b>Gene Name :</b>           | CD5   |
| <b>Protein Name :</b>        | T-cell surface glycoprotein CD5   |
| <b>Human Gene Id :</b>       | 921   |
| <b>Human Swiss Prot No :</b> | P06127  |
| <b>Mouse Gene Id :</b>       | 12507   |
| <b>Mouse Swiss Prot No :</b> | P13379  |
| <b>Rat Gene Id :</b>         | 54236   |
| <b>Rat Swiss Prot No :</b>   | P51882  |
| <b>Immunogen :</b>           | The antiserum was produced against synthesized peptide derived from human CD5. AA range:421-470 |
| <b>Specificity :</b>         | CD5 Polyclonal Antibody detects endogenous levels of CD5 protein.                               |
| <b>Formulation :</b>         | Liquid in PBS containing 50% glycerol, 0.5% BSA and 0.02% sodium azide.                         |
| <b>Source :</b>              | Polyclonal, Rabbit,IgG  |
| <b>Dilution :</b>            | WB 1:500 - 1:2000. ELISA: 1:20000. Not yet tested in other applications.                        |

|                               |  |
|-------------------------------|--|
| <b>Purification :</b>         | The antibody was affinity-purified from rabbit antiserum by affinity-chromatography using epitope-specific immunogen.                  |
| <b>Concentration :</b>        | 1 mg/ml  |
| <b>Storage Stability :</b>    | -15°C to -25°C/1 year(Do not lower than -25°C)   |
| <b>Observed Band :</b>        | 60kD   |
| <b>Cell Pathway :</b>         | Hematopoietic cell lineage;  |
| <b>Background :</b>           | function:May act as a receptor in regulating T-cell proliferation. CD5 interacts with CD72/LYB-2.,similarity:Contains 3 SRCR domains., |
| <b>Function :</b>             | function:May act as a receptor in regulating T-cell proliferation. CD5 interacts with CD72/LYB-2.,similarity:Contains 3 SRCR domains., |
| <b>Subcellular Location :</b> | Cell membrane; Single-pass type I membrane protein.  |
| <b>Expression :</b>           | Lymphocyte,Pancreas,Tonsil,  |

## Products Images



Western Blot analysis of various cells using CD5 Polyclonal Antibody



Western blot analysis of lysates from 293 cells, treated with PMA 125ng/ml 30', using CD5 Antibody. The lane on the right is blocked with the synthesized peptide.