

CD88 Polyclonal Antibody

Catalog No :	YT0781
Reactivity :	Human;Rat;Mouse;
Applications :	WB;IHC;IF;ELISA
Target :	CD88
Fields :	>>Neuroactive ligand-receptor interaction;>>Complement and coagulation cascades;>>Neutrophil extracellular trap formation;>>Alcoholic liver disease;>>Staphylococcus aureus infection;>>Coronavirus disease - COVID-19
Gene Name :	C5AR1
Protein Name :	C5a anaphylatoxin chemotactic receptor
Human Gene Id :	728
Human Swiss Prot No :	P21730
Mouse Swiss Prot No :	P30993
Immunogen :	The antiserum was produced against synthesized peptide derived from human N ternal CD88/C5aR. AA range:301-350
Specificity :	CD88 Polyclonal Antibody detects endogenous levels of CD88 protein.
Formulation :	Liquid in PBS containing 50% glycerol, 0.5% BSA and 0.02% sodium azide.
Source :	Polyclonal, Rabbit,IgG
Dilution :	WB 1:500 - 1:2000. IHC 1:100 - 1:300. IF 1:200 - 1:1000. ELISA: 1:5000. Not yet tested in other applications.
Purification :	The antibody was affinity-purified from rabbit antiserum by affinity-chromatography using epitope-specific immunogen.
Concentration :	1 mg/ml

Storage Stability : -15°C to -25°C/1 year(Do not lower than -25°C)

Observed Band : 45kD

Cell Pathway : Neuroactive ligand-receptor interaction;Complement and coagulation cascades;

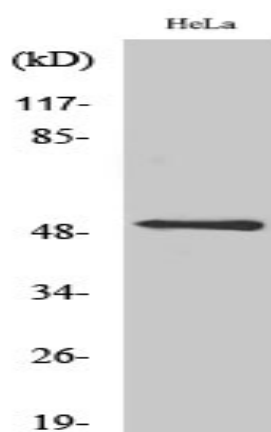
Background : function:Receptor for the chemotactic and inflammatory peptide anaphylatoxin C5a. This receptor stimulates chemotaxis, granule enzyme release and superoxide anion production.,PTM:Sulfation plays a critical role in the association of the receptor with C5a, but no significant role in the ability of the receptor to transduce a signal and mobilize calcium in response to a small peptide agonist.,similarity:Belongs to the G-protein coupled receptor 1 family.,

Function : function:Receptor for the chemotactic and inflammatory peptide anaphylatoxin C5a. This receptor stimulates chemotaxis, granule enzyme release and superoxide anion production.,PTM:Sulfation plays a critical role in the association of the receptor with C5a, but no significant role in the ability of the receptor to transduce a signal and mobilize calcium in response to a small peptide agonist.,similarity:Belongs to the G-protein coupled receptor 1 family.,

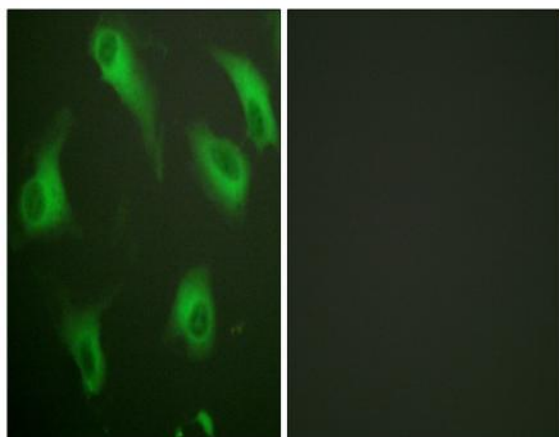
Subcellular Location : Cell membrane ; Multi-pass membrane protein . Cytoplasmic vesicle . Phosphorylated C5aR colocalizes with ARRB1 and ARRB2 in cytoplasmic vesicles. .

Expression : Brain,

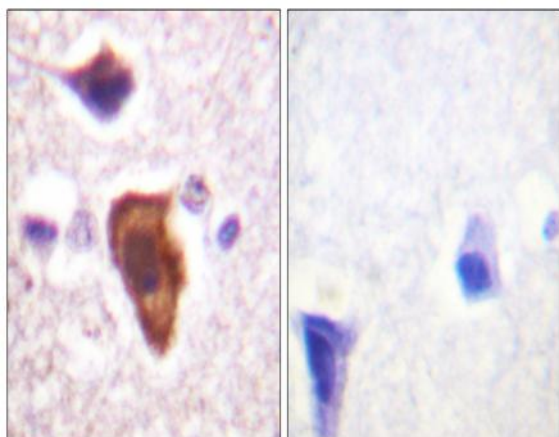
Products Images



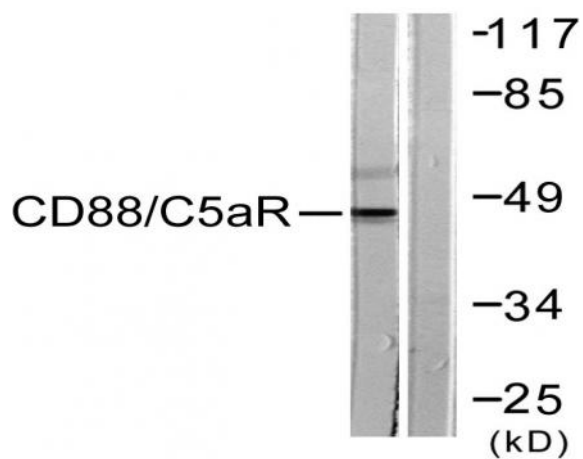
Western Blot analysis of various cells using CD88 Polyclonal Antibody



Immunofluorescence analysis of HeLa cells, using CD88/C5aR Antibody. The picture on the right is blocked with the synthesized peptide.



Immunohistochemistry analysis of paraffin-embedded human brain tissue, using CD88/C5aR Antibody. The picture on the right is blocked with the synthesized peptide.



Western blot analysis of lysates from HeLa cells, treated with PMA 125ng/ml 30', using CD88/C5aR Antibody. The lane on the right is blocked with the synthesized peptide.