

## Cdc7 Polyclonal Antibody

<b>Catalog No :</b>	YT0818
<b>Reactivity :</b>	Human;Mouse
<b>Applications :</b>	WB;IHC;IF;ELISA
<b>Target :</b>	Cdc7
<b>Fields :</b>	>>Cell cycle
<b>Gene Name :</b>	CDC7
<b>Protein Name :</b>	Cell division cycle 7-related protein kinase
<b>Human Gene Id :</b>	8317
<b>Human Swiss Prot No :</b>	O00311
<b>Mouse Swiss Prot No :</b>	Q9Z0H0
<b>Immunogen :</b>	The antiserum was produced against synthesized peptide derived from human CDC7. AA range:1-50
<b>Specificity :</b>	Cdc7 Polyclonal Antibody detects endogenous levels of Cdc7 protein.
<b>Formulation :</b>	Liquid in PBS containing 50% glycerol, 0.5% BSA and 0.02% sodium azide.
<b>Source :</b>	Polyclonal, Rabbit,IgG
<b>Dilution :</b>	WB 1:500 - 1:2000. IHC 1:100 - 1:300. ELISA: 1:5000.. IF 1:50-200
<b>Purification :</b>	The antibody was affinity-purified from rabbit antiserum by affinity-chromatography using epitope-specific immunogen.
<b>Concentration :</b>	1 mg/ml
<b>Storage Stability :</b>	-15°C to -25°C/1 year(Do not lower than -25°C)

**Observed Band :** 70kD

**Cell Pathway :** Cell\_Cycle\_G1S;Cell\_Cycle\_G2M\_DNA;

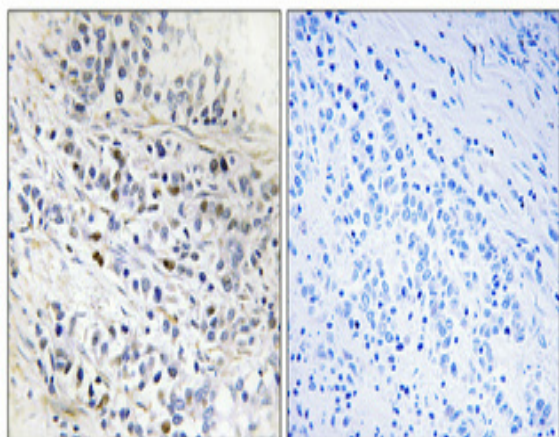
**Background :** This gene encodes a cell division cycle protein with kinase activity that is critical for the G1/S transition. The yeast homolog is also essential for initiation of DNA replication as cell division occurs. Overexpression of this gene product may be associated with neoplastic transformation for some tumors. Multiple alternatively spliced transcript variants that encode the same protein have been detected. [provided by RefSeq, Aug 2008],

**Function :** alternative products:A number of isoforms may be produced,catalytic activity:ATP + a protein = ADP + a phosphoprotein.,cofactor:Magnesium.,function:Seems to phosphorylate critical substrates that regulate the G1/S phase transition and/or DNA replication. Can phosphorylates MCM2 and MCM3.,similarity:Belongs to the protein kinase superfamily.,similarity:Belongs to the protein kinase superfamily. Ser/Thr protein kinase family. CDC7 subfamily.,similarity:Contains 1 protein kinase domain.,subunit:Forms a complex with either DBF4/DBF4A or DBF4B, leading to the activation of the kinase activity.,

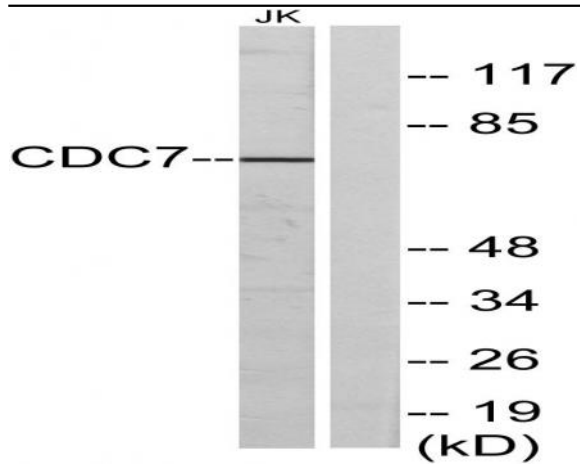
**Subcellular Location :** Nucleus.

**Expression :** Brain,Embryonal rhabdomyosarcoma,Liver,Testis,

## Products Images



Immunohistochemical analysis of paraffin-embedded Human lung cancer. Antibody was diluted at 1:100(4° overnight). High-pressure and temperature Tris-EDTA,pH8.0 was used for antigen retrieval. Negative contrl (right) obtained from antibody was pre-absorbed by immunogen peptide.



Western blot analysis of lysates from Jurkat cells, using CDC7 Antibody. The lane on the right is blocked with the synthesized peptide.