

## Cdk10 Polyclonal Antibody

<b>Catalog No :</b>	YT0830
<b>Reactivity :</b>	Human;Mouse;Rat
<b>Applications :</b>	WB;IHC;IF;ELISA
<b>Target :</b>	Cdk10
<b>Gene Name :</b>	CDK10
<b>Protein Name :</b>	Cyclin-dependent kinase 10
<b>Human Gene Id :</b>	8558
<b>Human Swiss Prot No :</b>	Q15131
<b>Mouse Gene Id :</b>	234854
<b>Mouse Swiss Prot No :</b>	Q3UMM4
<b>Rat Gene Id :</b>	361434
<b>Rat Swiss Prot No :</b>	Q4KM47
<b>Immunogen :</b>	The antiserum was produced against synthesized peptide derived from human CDK10. AA range:51-100
<b>Specificity :</b>	Cdk10 Polyclonal Antibody detects endogenous levels of Cdk10 protein.
<b>Formulation :</b>	Liquid in PBS containing 50% glycerol, 0.5% BSA and 0.02% sodium azide.
<b>Source :</b>	Polyclonal, Rabbit,IgG
<b>Dilution :</b>	WB 1:500 - 1:2000. IHC 1:100 - 1:300. ELISA: 1:10000.. IF 1:50-200
<b>Purification :</b>	The antibody was affinity-purified from rabbit antiserum by affinity-chromatography using epitope-specific immunogen.

**Concentration :** 1 mg/ml

**Storage Stability :** -15°C to -25°C/1 year(Do not lower than -25°C)

**Observed Band :** 43kD

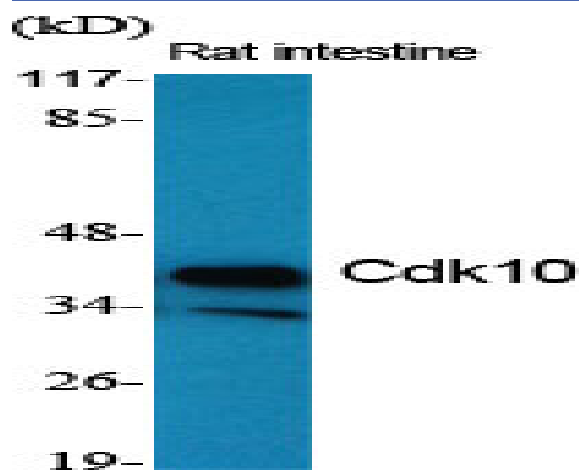
**Background :** The protein encoded by this gene belongs to the CDK subfamily of the Ser/Thr protein kinase family. The CDK subfamily members are highly similar to the gene products of *S. cerevisiae* cdc28, and *S. pombe* cdc2, and are known to be essential for cell cycle progression. This kinase has been shown to play a role in cellular proliferation and its function is limited to cell cycle G2-M phase. Multiple transcript variants encoding different isoforms have been found for this gene. [provided by RefSeq, May 2009],

**Function :** catalytic activity:ATP + a protein = ADP + a phosphoprotein.,similarity:Belongs to the protein kinase superfamily.,similarity:Belongs to the protein kinase superfamily. CMGC Ser/Thr protein kinase family. CDC2/CDKX subfamily.,similarity:Contains 1 protein kinase domain.,

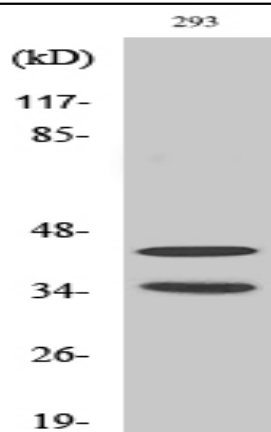
**Subcellular Location :** Cytoplasm, cytoskeleton, cilium basal body .

**Expression :** Brain,Colon,Kidney,Lung,

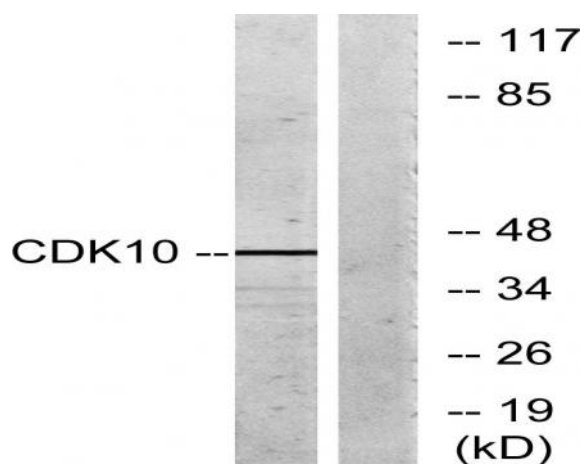
## Products Images



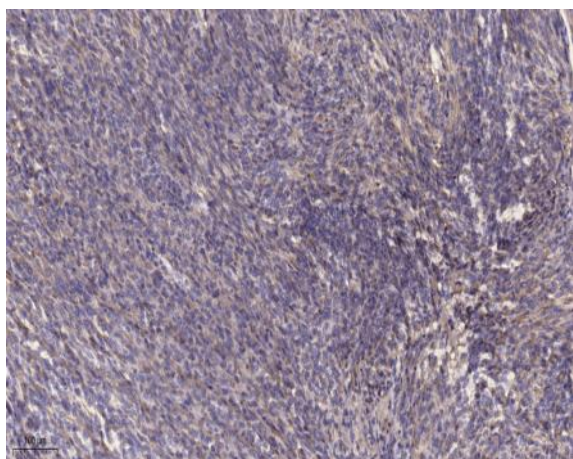
Western Blot analysis of various cells using Cdk10 Polyclonal Antibody diluted at 1:500



Western Blot analysis of 293 cells using Cdk10 Polyclonal Antibody diluted at 1:500



Western blot analysis of lysates from 293 cells, using CDK10 Antibody. The lane on the right is blocked with the synthesized peptide.



Immunohistochemical analysis of paraffin-embedded human Colon cancer. 1, Antibody was diluted at 1:200(4° overnight). 2, Tris-EDTA,pH9.0 was used for antigen retrieval. 3,Secondary antibody was diluted at 1:200(room temperature, 45min).