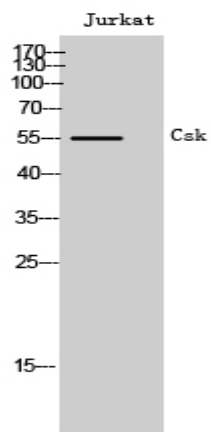


Csk Polyclonal Antibody

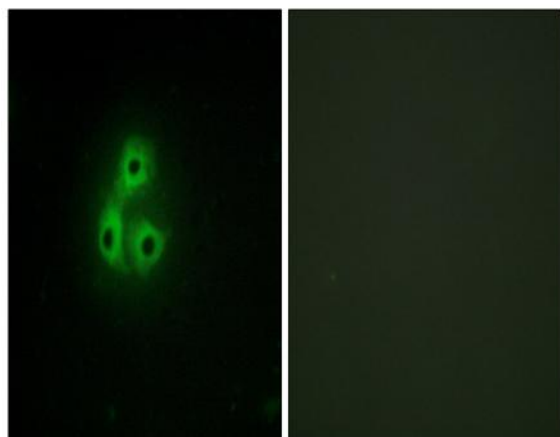
Catalog No :	YT1132
Reactivity :	Human;Mouse;Rat
Applications :	WB;IF;ELISA
Target :	Csk
Fields :	>>Epithelial cell signaling in Helicobacter pylori infection
Gene Name :	CSK
Protein Name :	Tyrosine-protein kinase CSK
Human Gene Id :	1445
Human Swiss Prot No :	P41240
Mouse Gene Id :	12988
Mouse Swiss Prot No :	P41241
Rat Gene Id :	315707
Rat Swiss Prot No :	P32577
Immunogen :	The antiserum was produced against synthesized peptide derived from N-terminal human CSK. AA range:31-80
Specificity :	Csk Polyclonal Antibody detects endogenous levels of Csk protein.
Formulation :	Liquid in PBS containing 50% glycerol, 0.5% BSA and 0.02% sodium azide.
Source :	Polyclonal, Rabbit,IgG
Dilution :	WB 1:500 - 1:2000. IF 1:200 - 1:1000. ELISA: 1:5000. Not yet tested in other applications.

Purification :	The antibody was affinity-purified from rabbit antiserum by affinity-chromatography using epitope-specific immunogen.
Concentration :	1 mg/ml
Storage Stability :	-15°C to -25°C/1 year(Do not lower than -25°C)
Observed Band :	55kD
Cell Pathway :	Chemokine;Neurotrophin;Regulates Actin and Cytoskeleton;Epithelial cell signaling in Helicobacter pylori infection;
Background :	catalytic activity:ATP + a [protein]-L-tyrosine = ADP + a [protein]-L-tyrosine phosphate.,function:Specifically phosphorylates 'Tyr-504' on LCK, which acts as a negative regulatory site. Can also act on the LYN and FYN kinases.,PTM:Autophosphorylation of Tyr-304 occurs only at abnormally high CSK concentrations in vitro.,similarity:Belongs to the protein kinase superfamily. Tyr protein kinase family.,similarity:Belongs to the protein kinase superfamily. Tyr protein kinase family. CSK subfamily.,similarity:Contains 1 protein kinase domain.,similarity:Contains 1 SH2 domain.,similarity:Contains 1 SH3 domain.,subcellular location:Mainly cytoplasmic, also present in lipid rafts.,subunit:Interacts with PTPN8 (By similarity). Interacts with phosphorylated SIT1, PAG1, LIME1 and TGFB111.,tissue specificity:Expressed in lung and macrophages.,
Function :	catalytic activity:ATP + a [protein]-L-tyrosine = ADP + a [protein]-L-tyrosine phosphate.,function:Specifically phosphorylates 'Tyr-504' on LCK, which acts as a negative regulatory site. Can also act on the LYN and FYN kinases.,PTM:Autophosphorylation of Tyr-304 occurs only at abnormally high CSK concentrations in vitro.,similarity:Belongs to the protein kinase superfamily. Tyr protein kinase family.,similarity:Belongs to the protein kinase superfamily. Tyr protein kinase family. CSK subfamily.,similarity:Contains 1 protein kinase domain.,similarity:Contains 1 SH2 domain.,similarity:Contains 1 SH3 domain.,subcellular location:Mainly cytoplasmic, also present in lipid rafts.,subunit:Interacts with PTPN8 (By similarity). Interacts with phosphorylated SIT1, PAG1, LIME1 and TGFB111.,tissue specificity:Expressed in lung and macrophages.,
Subcellular Location :	Cytoplasm . Cell membrane . Mainly cytoplasmic, also present in lipid rafts. .
Expression :	Expressed in lung and macrophages.

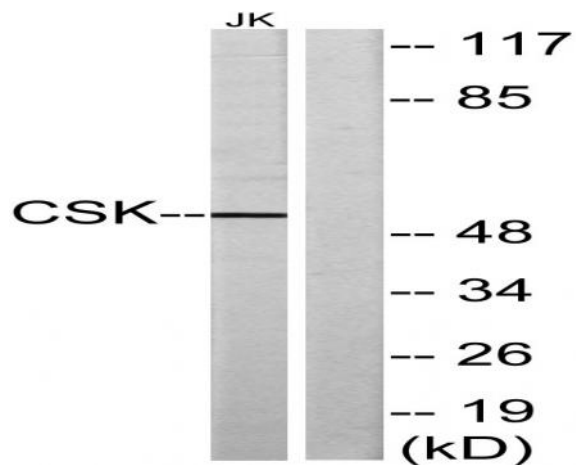
Products Images



Western Blot analysis of Jurkat cells using Csk Polyclonal Antibody



Immunofluorescence analysis of A549 cells, using CSK Antibody. The picture on the right is blocked with the synthesized peptide.



Western blot analysis of lysates from Jurkat cells, using CSK Antibody. The lane on the right is blocked with the synthesized peptide.