

## Cerebellin 1 Polyclonal Antibody

<b>Catalog No :</b>	YT0868
<b>Reactivity :</b>	Human;Mouse;Rat
<b>Applications :</b>	WB;ELISA
<b>Target :</b>	Cerebellin 1
<b>Gene Name :</b>	CBLN1
<b>Protein Name :</b>	Cerebellin-1
<b>Human Gene Id :</b>	869
<b>Human Swiss Prot No :</b>	P23435
<b>Mouse Gene Id :</b>	12404
<b>Mouse Swiss Prot No :</b>	Q9R171
<b>Rat Gene Id :</b>	498922
<b>Rat Swiss Prot No :</b>	P63182
<b>Immunogen :</b>	The antiserum was produced against synthesized peptide derived from human CBLN1. AA range:131-180
<b>Specificity :</b>	Cerebellin 1 Polyclonal Antibody detects endogenous levels of Cerebellin 1 protein.
<b>Formulation :</b>	Liquid in PBS containing 50% glycerol, 0.5% BSA and 0.02% sodium azide.
<b>Source :</b>	Polyclonal, Rabbit,IgG
<b>Dilution :</b>	WB 1:500 - 1:2000. ELISA: 1:10000. Not yet tested in other applications.
<b>Purification :</b>	The antibody was affinity-purified from rabbit antiserum by affinity-chromatography using epitope-specific immunogen.

**Concentration :** 1 mg/ml

---

**Storage Stability :** -15°C to -25°C/1 year(Do not lower than -25°C)

---

**Observed Band :** 25kD

---

**Background :** This gene encodes a cerebellum-specific precursor protein, precerebellin, with similarity to the globular (non-collagen-like) domain of complement component C1qB. Precerebellin is processed to give rise to several derivatives, including the hexadecapeptide, cerebellin, which is highly enriched in postsynaptic structures of Purkinje cells. Cerebellin has also been found in human and rat adrenals, where it has been shown to enhance the secretory activity of this gland. [provided by RefSeq, Aug 2008],

---

**Function :** developmental stage:Low at birth, the cerebellin concentration increases between day 5 and 15, and reaches peak values between day 21 and 56.,function:Cerebellin exerts neuromodulatory functions. Directly stimulates norepinephrine release via the adenylate cyclase/PKA-dependent signaling pathway; and indirectly enhances adrenocortical secretion in vivo, through a paracrine mechanism involving medullary catecholamine release.,function:Cerebellin-1 is required for synapse integrity and synaptic plasticity. Required for the ER export and secretion of CBLN3.,PTM:The proteolytic processing to yield cerebellin seems to occur either prior to the secretion by presynaptic neurons and subsequent oligomerization or in some other location after release of the mature protein.,similarity:Contains 1 C1q domain.,subcellular location:Might be bound to, or associated with, a membrane.,subunit:Homohexamer;

---

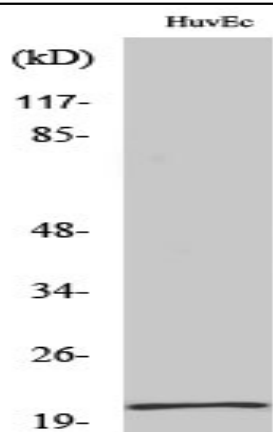
**Subcellular Location :** Secreted . Cell junction, synapse, postsynaptic cell membrane .

---

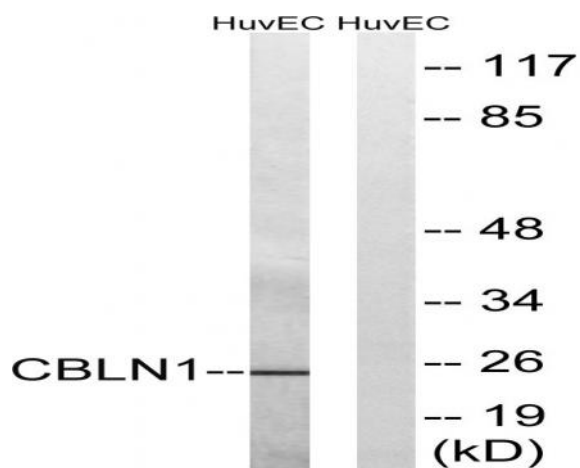
**Expression :** In the Purkinje cells postsynaptic structures. In the cerebellum, cerebellin is much less abundant than [des-Ser1]-cerebellin.

---

## Products Images



Western Blot analysis of various cells using Cerebellin 1 Polyclonal Antibody



Western blot analysis of lysates from HUVEC cells, using CBLN1 Antibody. The lane on the right is blocked with the synthesized peptide.