

CIDE-B Polyclonal Antibody

Catalog No :	YT0928
Reactivity :	Human;Mouse
Applications :	WB;IHC;IF;ELISA
Target :	CIDE-B
Gene Name :	CIDEB
Protein Name :	Cell death activator CIDE-B
Human Gene Id :	27141
Human Swiss Prot No :	Q9UHD4
Mouse Gene Id :	12684
Mouse Swiss Prot No :	O70303
Immunogen :	The antiserum was produced against synthesized peptide derived from human CIDEB. AA range:91-140
Specificity :	CIDE-B Polyclonal Antibody detects endogenous levels of CIDE-B protein.
Formulation :	Liquid in PBS containing 50% glycerol, 0.5% BSA and 0.02% sodium azide.
Source :	Polyclonal, Rabbit,IgG
Dilution :	WB 1:500 - 1:2000. IHC 1:100 - 1:300. IF 1:200 - 1:1000. ELISA: 1:40000. Not yet tested in other applications.
Purification :	The antibody was affinity-purified from rabbit antiserum by affinity-chromatography using epitope-specific immunogen.
Concentration :	1 mg/ml
Storage Stability :	-15°C to -25°C/1 year(Do not lower than -25°C)

Observed Band : 24kD

Background : function:Activates apoptosis.,similarity:Contains 1 CIDE-N domain.,subunit:Inhibited by DFFB. Interacts with DFFA and DFFB.,tissue specificity:Highly expressed in liver and small intestine and, at lower levels, in colon, kidney and spleen.,

Function : function:Activates apoptosis.,similarity:Contains 1 CIDE-N domain.,subunit:Inhibited by DFFB. Interacts with DFFA and DFFB.,tissue specificity:Highly expressed in liver and small intestine and, at lower levels, in colon, kidney and spleen.,

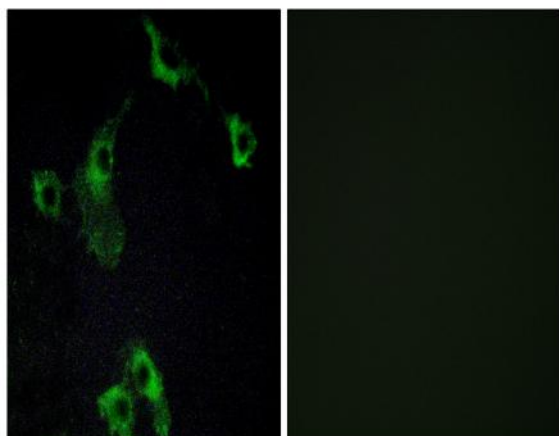
Subcellular Location : intracellular,lipid particle,cytosol,perinuclear region of cytoplasm,

Expression : Highly expressed in liver and small intestine and, at lower levels, in colon, kidney and spleen.

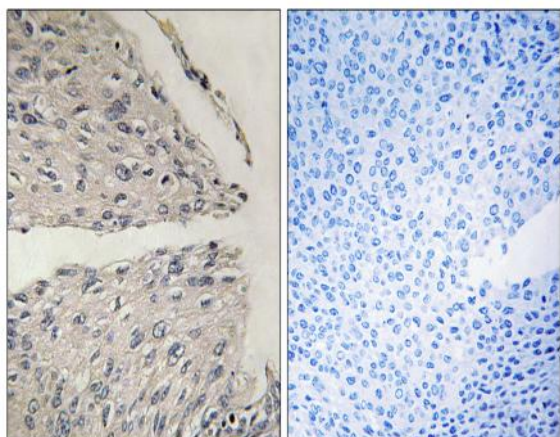
Products Images



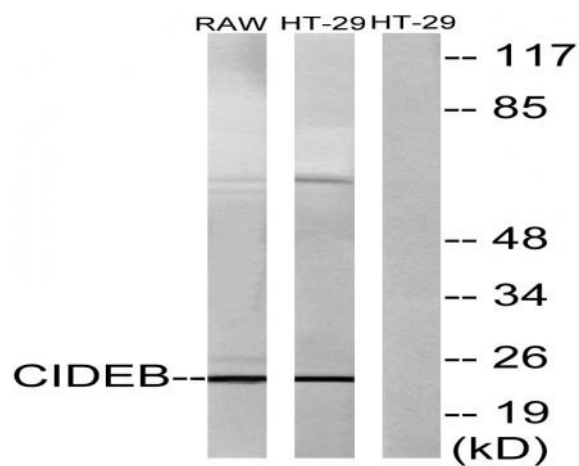
Western Blot analysis of various cells using CIDE-B Polyclonal Antibody



Immunofluorescence analysis of COS7 cells, using CIDE-B Antibody. The picture on the right is blocked with the synthesized peptide.



Immunohistochemistry analysis of paraffin-embedded human cervix caecinoma tissue, using CIDEB Antibody. The picture on the right is blocked with the synthesized peptide.



Western blot analysis of lysates from HT-29 and RAW264.7 cells, using CIDEB Antibody. The lane on the right is blocked with the synthesized peptide.