

## CNOT2 Polyclonal Antibody

<b>Catalog No :</b>	YT1000
<b>Reactivity :</b>	Human;Mouse;Rat
<b>Applications :</b>	WB;IHC;IF;ELISA
<b>Target :</b>	CNOT2
<b>Fields :</b>	>>RNA degradation
<b>Gene Name :</b>	CNOT2
<b>Protein Name :</b>	CCR4-NOT transcription complex subunit 2
<b>Human Gene Id :</b>	4848
<b>Human Swiss Prot No :</b>	Q9NZN8
<b>Mouse Gene Id :</b>	72068
<b>Mouse Swiss Prot No :</b>	Q8C5L3
<b>Immunogen :</b>	The antiserum was produced against synthesized peptide derived from human CNOT2. AA range:67-116
<b>Specificity :</b>	CNOT2 Polyclonal Antibody detects endogenous levels of CNOT2 protein.
<b>Formulation :</b>	Liquid in PBS containing 50% glycerol, 0.5% BSA and 0.02% sodium azide.
<b>Source :</b>	Polyclonal, Rabbit,IgG
<b>Dilution :</b>	WB 1:500 - 1:2000. IHC 1:100 - 1:300. ELISA: 1:40000.. IF 1:50-200
<b>Purification :</b>	The antibody was affinity-purified from rabbit antiserum by affinity-chromatography using epitope-specific immunogen.
<b>Concentration :</b>	1 mg/ml

**Storage Stability :** -15°C to -25°C/1 year(Do not lower than -25°C)

**Observed Band :** 46kD

**Cell Pathway :** RNA degradation;

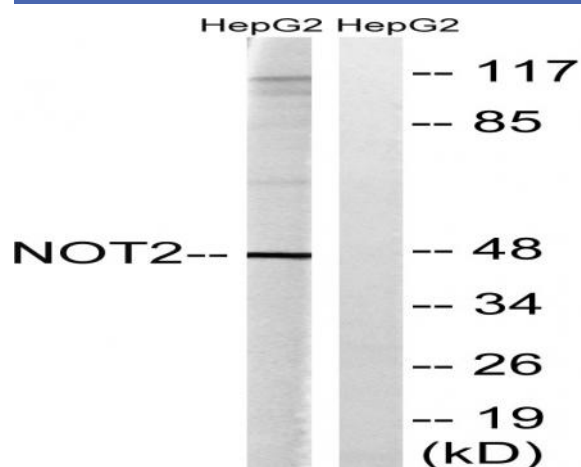
**Background :** CCR4-NOT transcription complex subunit 2(CNOT2) Homo sapiens This gene encodes a subunit of the multi-component CCR4-NOT complex. The CCR4-NOT complex regulates mRNA synthesis and degradation and is also thought to be involved in mRNA splicing, transport and localization. The encoded protein interacts with histone deacetylases and functions as a repressor of polymerase II transcription. Alternatively spliced transcript variants have been observed for this gene. [provided by RefSeq, Dec 2010],

**Function :** function:The CCR4-NOT complex functions as general transcription regulation complex.,PTM:Phosphorylated upon DNA damage, probably by ATM or ATR.,similarity:Belongs to the CNOT2/3/5 family.,subunit:Subunit of the CCR4-NOT core complex that contains CHAF1A, CHAF1B, CNOT1, CNOT2, CNOT3, CNOT4, CNOT6 and CNOT8.,tissue specificity:Ubiquitous. Highly expressed in brain, heart, thymus, spleen, kidney, liver, small intestine, placenta, lung and peripheral blood leukocytes.,

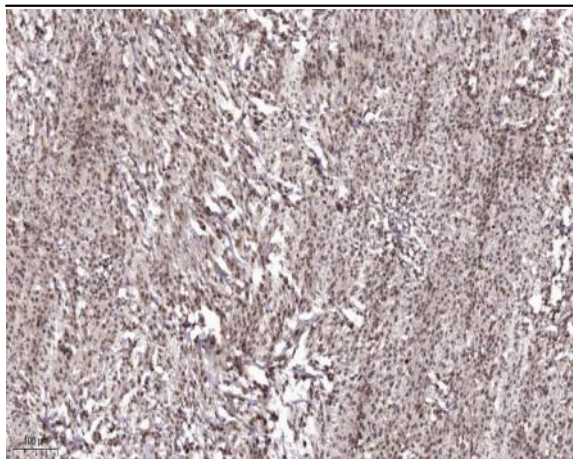
**Subcellular Location :** Cytoplasm . Nucleus .

**Expression :** Ubiquitous. Highly expressed in brain, heart, thymus, spleen, kidney, liver, small intestine, placenta, lung and peripheral blood leukocytes.

## Products Images



Western blot analysis of lysates from HepG2 cells, treated with starved 24h, using CNOT2 Antibody. The lane on the right is blocked with the synthesized peptide.



Immunohistochemical analysis of paraffin-embedded human Colon cancer. 1, Antibody was diluted at 1:200(4° overnight). 2, Tris-EDTA,pH9.0 was used for antigen retrieval. 3,Secondary antibody was diluted at 1:200(room temperature, 45min).