

COL18A1 Polyclonal Antibody

Catalog No :	YT1015
Reactivity :	Human;Mouse
Applications :	IHC;IF;ELISA
Target :	COL18A1
Fields :	>>Protein digestion and absorption
Gene Name :	COL18A1
Protein Name :	Collagen alpha-1 (XVIII) chain
Human Gene Id :	80781
Human Swiss Prot No :	P39060
Mouse Gene Id :	12822
Mouse Swiss Prot No :	P39061
Immunogen :	The antiserum was produced against synthesized peptide derived from human Collagen alpha1 XVIII. AA range:1301-1350
Specificity :	COL18A1 Polyclonal Antibody detects endogenous levels of COL18A1 protein.
Formulation :	Liquid in PBS containing 50% glycerol, 0.5% BSA and 0.02% sodium azide.
Source :	Polyclonal, Rabbit,IgG
Dilution :	IHC 1:100 - 1:300. ELISA: 1:20000.. IF 1:50-200
Purification :	The antibody was affinity-purified from rabbit antiserum by affinity-chromatography using epitope-specific immunogen.
Concentration :	1 mg/ml

Storage Stability : -15°C to -25°C/1 year(Do not lower than -25°C)

Molecularweight : 178kD

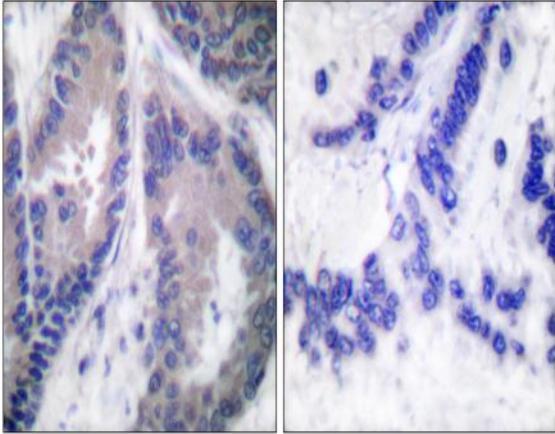
Background : This gene encodes the alpha chain of type XVIII collagen. This collagen is one of the multiplexins, extracellular matrix proteins that contain multiple triple-helix domains (collagenous domains) interrupted by non-collagenous domains. A long isoform of the protein has an N-terminal domain that is homologous to the extracellular part of frizzled receptors. Proteolytic processing at several endogenous cleavage sites in the C-terminal domain results in production of endostatin, a potent antiangiogenic protein that is able to inhibit angiogenesis and tumor growth. Mutations in this gene are associated with Knobloch syndrome. The main features of this syndrome involve retinal abnormalities, so type XVIII collagen may play an important role in retinal structure and in neural tube closure. Alternative splicing results in multiple transcript variants. [provided by RefSeq, Dec 2014],

Function : disease:Defects in COL18A1 are a cause of Knobloch syndrome (KNO) [MIM:267750]. KNO is an autosomal recessive disorder defined by the occurrence of high myopia, vitreoretinal degeneration with retinal detachment, macular abnormalities and occipital encephalocele.,function:COLA18A probably plays a major role in determining the retinal structure as well as in the closure of the neural tube.,function:Endostatin potently inhibits endothelial cell proliferation and angiogenesis. May inhibit angiogenesis by binding to the heparan sulfate proteoglycans involved in growth factor signaling.,polymorphism:There is an association between a polymorphism in position 1675 and prostate cancer. Heterozygous Asn-1675 individuals have a 2.5 times increased chance of developing prostate cancer as compared with homozygous Asp-1675 individuals.,PTM:Prolines at the third position of the tripeptide repeating un

Subcellular Location : Secreted, extracellular space, extracellular matrix . Secreted, extracellular space, extracellular matrix, basement membrane .; [Non-collagenous domain 1]: Secreted, extracellular space, extracellular matrix, basement membrane . Secreted .; [Endostatin]: Secreted . Secreted, extracellular space, extracellular matrix, basement membrane .

Expression : Present in multiple organs with highest levels in liver, lung and kidney.

Products Images



Immunohistochemistry analysis of paraffin-embedded human lung carcinoma tissue, using Collagen alpha1 XVIII Antibody. The picture on the right is blocked with the synthesized peptide.