

COL5A3 Polyclonal Antibody

Catalog No :	YT1033
Reactivity :	Human
Applications :	WB;IHC;IF;ELISA
Target :	COL5A3
Fields :	>>Protein digestion and absorption
Gene Name :	COL5A3
Protein Name :	Collagen alpha-3(V) chain
Human Gene Id :	50509
Human Swiss Prot No :	P25940
Immunogen :	The antiserum was produced against synthesized peptide derived from human Collagen V alpha3. AA range:221-270
Specificity :	COL5A3 Polyclonal Antibody detects endogenous levels of COL5A3 protein.
Formulation :	Liquid in PBS containing 50% glycerol, 0.5% BSA and 0.02% sodium azide.
Source :	Polyclonal, Rabbit,IgG
Dilution :	WB 1:500 - 1:2000. IHC 1:100 - 1:300. IF 1:200 - 1:1000. ELISA: 1:20000. Not yet tested in other applications.
Purification :	The antibody was affinity-purified from rabbit antiserum by affinity-chromatography using epitope-specific immunogen.
Concentration :	1 mg/ml
Storage Stability :	-15°C to -25°C/1 year(Do not lower than -25°C)
Observed Band :	170kD

Cell Pathway : Focal adhesion;ECM-receptor interaction;

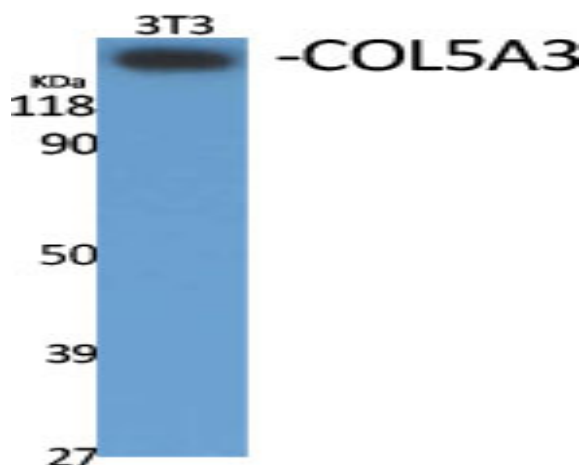
Background : This gene encodes an alpha chain for one of the low abundance fibrillar collagens. Fibrillar collagen molecules are trimers that can be composed of one or more types of alpha chains. Type V collagen is found in tissues containing type I collagen and appears to regulate the assembly of heterotypic fibers composed of both type I and type V collagen. This gene product is closely related to type XI collagen and it is possible that the collagen chains of types V and XI constitute a single collagen type with tissue-specific chain combinations. Mutations in this gene are thought to be responsible for the symptoms of a subset of patients with Ehlers-Danlos syndrome type III. Messages of several sizes can be detected in northern blots but sequence information cannot confirm the identity of the shorter messages. [provided by RefSeq, Jul 2008],

Function : function:Type V collagen is a member of group I collagen (fibrillar forming collagen). It is a minor connective tissue component of nearly ubiquitous distribution. Type V collagen binds to DNA, heparan sulfate, thrombospondin, heparin, and insulin.,PTM:Prolines at the third position of the tripeptide repeating unit (G-X-Y) are hydroxylated in some or all of the chains.,similarity:Belongs to the fibrillar collagen family.,similarity:Contains 1 TSP N-terminal (TSPN) domain.,subunit:Trimers of two alpha 1(V) and one alpha 2(V) chains in most tissues and trimers of one alpha 1(V), one alpha 2(V), and one alpha 3(V) chains in placenta.,

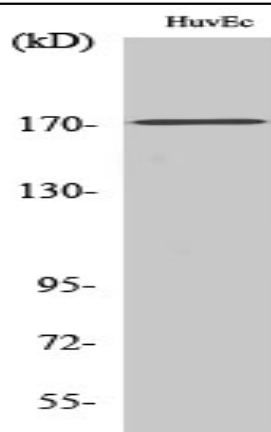
Subcellular Location : Secreted, extracellular space, extracellular matrix .

Expression : Brain,Heart,Liver,Placenta,

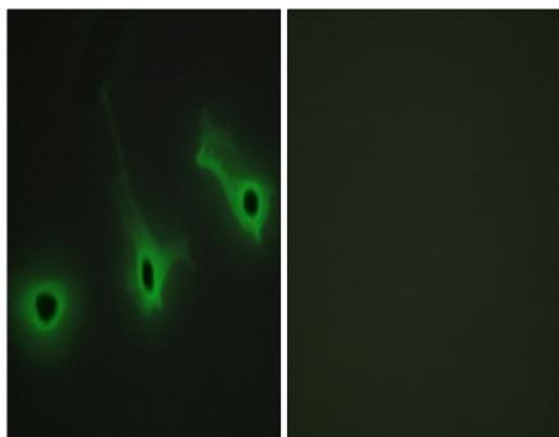
Products Images



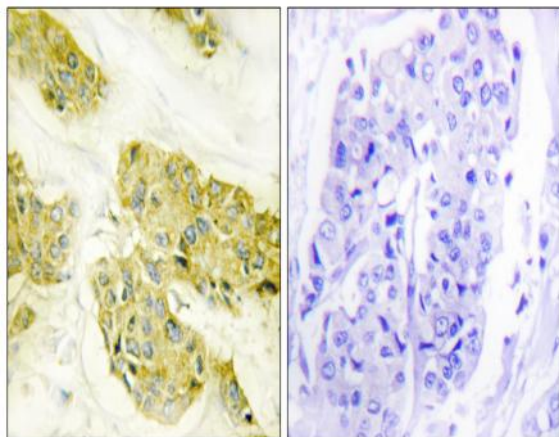
Western Blot analysis of various cells using COL5A3 Polyclonal Antibody



Western Blot analysis of K562 cells using COL5A3 Polyclonal Antibody



Immunofluorescence analysis of HeLa cells, using Collagen V alpha3 Antibody. The picture on the right is blocked with the synthesized peptide.



Immunohistochemistry analysis of paraffin-embedded human breast carcinoma tissue, using Collagen V alpha3 Antibody. The picture on the right is blocked with the synthesized peptide.