

COL7A1 Polyclonal Antibody

Catalog No :	YT1037
Reactivity :	Human;Mouse
Applications :	IHC;IF;ELISA
Target :	COL7A1
Fields :	>>Protein digestion and absorption
Gene Name :	COL7A1
Protein Name :	Collagen alpha-1(VII) chain
Human Gene Id :	1294
Human Swiss Prot No :	Q02388
Mouse Gene Id :	12836
Mouse Swiss Prot No :	Q63870
Immunogen :	The antiserum was produced against synthesized peptide derived from human Collagen VII alpha1. AA range:1841-1890
Specificity :	COL7A1 Polyclonal Antibody detects endogenous levels of COL7A1 protein.
Formulation :	Liquid in PBS containing 50% glycerol, 0.5% BSA and 0.02% sodium azide.
Source :	Polyclonal, Rabbit,IgG
Dilution :	IHC 1:100 - 1:300. IF 1:200 - 1:1000. ELISA: 1:5000. Not yet tested in other applications.
Purification :	The antibody was affinity-purified from rabbit antiserum by affinity-chromatography using epitope-specific immunogen.
Concentration :	1 mg/ml

Storage Stability : -15°C to -25°C/1 year(Do not lower than -25°C)

Molecularweight : 295kD

Background : collagen type VII alpha 1 chain(COL7A1) Homo sapiens This gene encodes the alpha chain of type VII collagen. The type VII collagen fibril, composed of three identical alpha collagen chains, is restricted to the basement zone beneath stratified squamous epithelia. It functions as an anchoring fibril between the external epithelia and the underlying stroma. Mutations in this gene are associated with all forms of dystrophic epidermolysis bullosa. In the absence of mutations, however, an acquired form of this disease can result from an autoimmune response made to type VII collagen. [provided by RefSeq, Jul 2008],

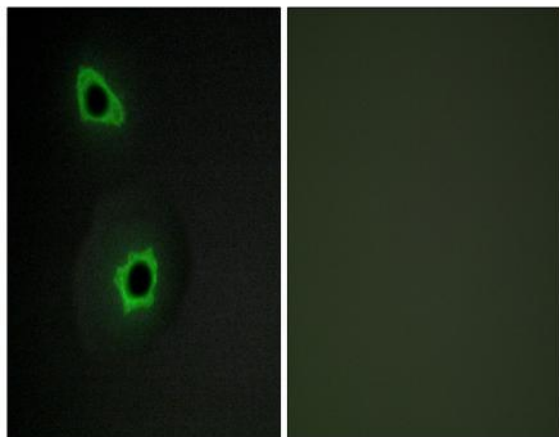
Function : disease:Defects in COL7A1 are the cause of epidermolysis bullosa dystrophica (DEB) [MIM:131750, 226600]. DEB defines a group of blistering skin diseases characterized by tissue separation which occurs below the dermal-epidermal basement membrane at the level of the anchoring fibrils. Inheritance can be autosomal dominant or recessive. Various clinical types with different severity are recognized, ranging from severe mutilating forms to mild forms with limited and localized scarring, and less frequent extracutaneous manifestations. Mild forms include epidermolysis bullosa mitis and epidermolysis bullosa localisata.,disease:Defects in COL7A1 are the cause of epidermolysis bullosa dystrophica Bart type (B-DEB) [MIM:132000]. B-DEB is an autosomal dominant form of dystrophic epidermolysis bullosa characterized by congenital localized absence of skin, skin fragility and deformity of nails.,dis

Subcellular Location : Secreted, extracellular space, extracellular matrix, basement membrane.

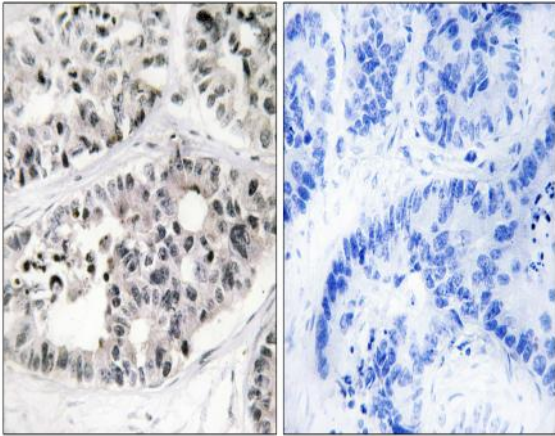
Location :

Expression : Keratinocyte,Placenta,Spleen,

Products Images



Immunofluorescence analysis of COS7 cells, using Collagen VII alpha1 Antibody. The picture on the right is blocked with the synthesized peptide.



Immunohistochemistry analysis of paraffin-embedded human lung carcinoma tissue, using Collagen VII alpha1 Antibody. The picture on the right is blocked with the synthesized peptide.