

## Contactin 6 Polyclonal Antibody

<b>Catalog No :</b>	YT1056
<b>Reactivity :</b>	Human;Mouse
<b>Applications :</b>	WB;ELISA
<b>Target :</b>	Contactin 6
<b>Gene Name :</b>	CNTN6
<b>Protein Name :</b>	Contactin-6
<b>Human Gene Id :</b>	27255
<b>Human Swiss Prot No :</b>	Q9UQ52
<b>Mouse Gene Id :</b>	53870
<b>Mouse Swiss Prot No :</b>	Q9JMB8
<b>Immunogen :</b>	The antiserum was produced against synthesized peptide derived from human CNTN6. AA range:331-380
<b>Specificity :</b>	Contactin 6 Polyclonal Antibody detects endogenous levels of Contactin 6 protein.
<b>Formulation :</b>	Liquid in PBS containing 50% glycerol, 0.5% BSA and 0.02% sodium azide.
<b>Source :</b>	Polyclonal, Rabbit,IgG
<b>Dilution :</b>	WB 1:500 - 1:2000. ELISA: 1:40000. Not yet tested in other applications.
<b>Purification :</b>	The antibody was affinity-purified from rabbit antiserum by affinity-chromatography using epitope-specific immunogen.
<b>Concentration :</b>	1 mg/ml
<b>Storage Stability :</b>	-15°C to -25°C/1 year(Do not lower than -25°C)

**Molecularweight :** 114kD

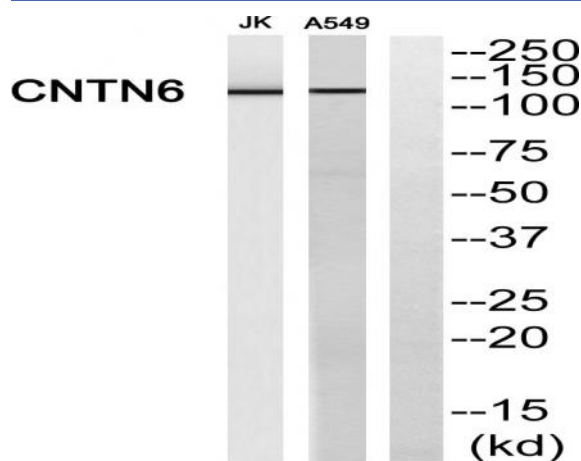
**Background :** The protein encoded by this gene is a member of the immunoglobulin superfamily. It is a glycosylphosphatidylinositol (GPI)-anchored neuronal membrane protein that functions as a cell adhesion molecule. It may play a role in the formation of axon connections in the developing nervous system. Alternative splicing results in multiple transcript variants. [provided by RefSeq, Jan 2014],

**Function :** function:Contactins mediate cell surface interactions during nervous system development. Participates in oligodendrocytes generation by acting as a ligand of NOTCH1. Its association with NOTCH1 promotes NOTCH1 activation through the released notch intracellular domain (NICD) and subsequent translocation to the nucleus. Involved in motor coordination.,similarity:Belongs to the immunoglobulin superfamily. Contactin family.,similarity:Contains 4 fibronectin type-III domains.,similarity:Contains 6 Ig-like C2-type (immunoglobulin-like) domains.,tissue specificity:Expressed in nervous system. Highly expressed in cerebellum. Expressed at intermediate level in thalamus, subthalamic nucleus. Weakly expressed in corpus callosum, caudate nucleus and spinal cord.,

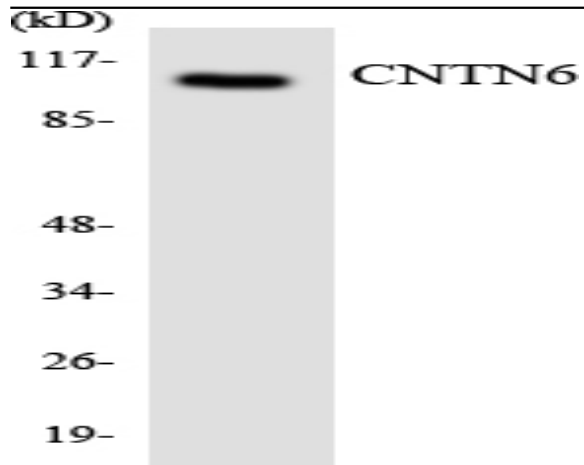
**Subcellular Location :** Cell membrane ; Lipid-anchor, GPI-anchor .

**Expression :** Expressed in nervous system. Highly expressed in cerebellum. Expressed at intermediate level in thalamus, subthalamic nucleus. Weakly expressed in corpus callosum, caudate nucleus and spinal cord.

## Products Images



Western blot analysis of CNTN6 Antibody. The lane on the right is blocked with the CNTN6 peptide.



Western blot analysis of the lysates from HeLa cells using CNTN6 antibody.