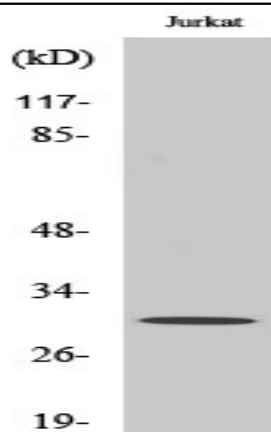


CSP Polyclonal Antibody

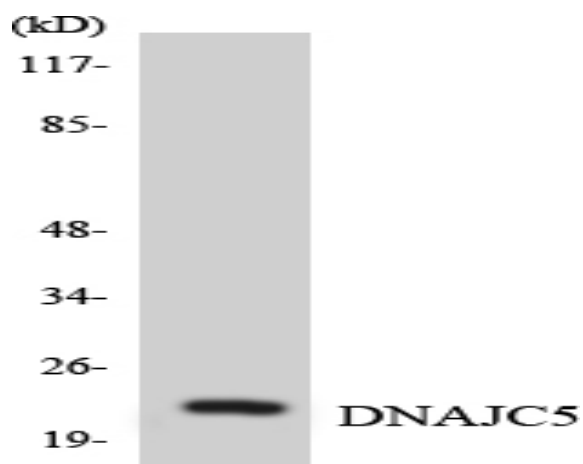
Catalog No :	YT1135
Reactivity :	Human;Mouse;Rat
Applications :	WB;ELISA
Target :	CSP
Fields :	>>Protein processing in endoplasmic reticulum
Gene Name :	DNAJC5
Protein Name :	DnaJ homolog subfamily C member 5
Human Gene Id :	80331
Human Swiss Prot No :	Q9H3Z4
Mouse Gene Id :	13002
Mouse Swiss Prot No :	P60904
Rat Gene Id :	79130
Rat Swiss Prot No :	P60905
Immunogen :	The antiserum was produced against synthesized peptide derived from human DNAJC5. AA range:131-180
Specificity :	CSP Polyclonal Antibody detects endogenous levels of CSP protein.
Formulation :	Liquid in PBS containing 50% glycerol, 0.5% BSA and 0.02% sodium azide.
Source :	Polyclonal, Rabbit,IgG
Dilution :	WB 1:500 - 1:2000. ELISA: 1:10000. Not yet tested in other applications.

Purification :	The antibody was affinity-purified from rabbit antiserum by affinity-chromatography using epitope-specific immunogen.
Concentration :	1 mg/ml
Storage Stability :	-15°C to -25°C/1 year(Do not lower than -25°C)
Observed Band :	30kD
Background :	This gene is a member of the J protein family. J proteins function in many cellular processes by regulating the ATPase activity of 70 kDa heat shock proteins. The encoded protein plays a role in membrane trafficking and protein folding, and has been shown to have anti-neurodegenerative properties. The encoded protein is known to play a role in cystic fibrosis and Huntington's disease. A pseudogene of this gene is located on the short arm of chromosome 8. [provided by RefSeq, Nov 2010],
Function :	function:May have an important role in presynaptic function. May be involved in calcium-dependent neurotransmitter release at nerve endings.,PTM:Fatty acylated. Heavily palmitoylated in the cysteine string motif.,similarity:Contains 1 J domain.,subcellular location:Identified by mass spectrometry in melanosome fractions from stage I to stage IV.,tissue specificity:Expressed in pancreas, kidney, skeletal muscle, liver, lung, placenta, brain and heart.,
Subcellular Location :	Cytoplasm, cytosol . Membrane ; Lipid-anchor . Cytoplasmic vesicle, secretory vesicle, chromaffin granule membrane . Melanosome . Cell membrane . The association with membranes is regulated by palmitoylation (By similarity). Identified by mass spectrometry in melanosome fractions from stage I to stage IV (PubMed:17081065). .
Expression :	Expressed in pancreas, kidney, skeletal muscle, liver, lung, placenta, brain and heart.

Products Images



Western Blot analysis of various cells using CSP Polyclonal Antibody diluted at 1:2000



Western blot analysis of the lysates from HeLa cells using DNAJC5 antibody.