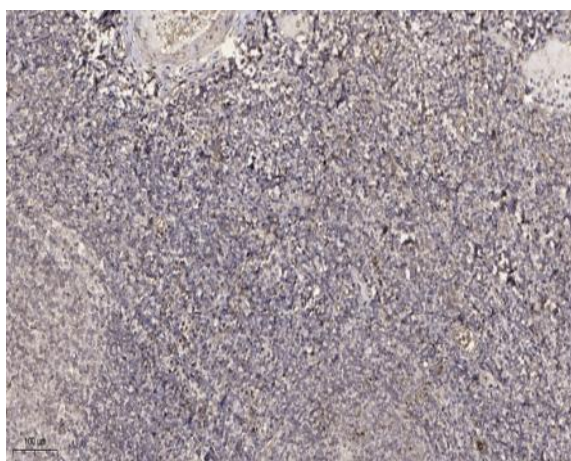


CTRP8 Polyclonal Antibody

Catalog No :	YT1154
Reactivity :	Human
Applications :	IHC;IF;ELISA
Target :	CTRP8
Gene Name :	C1QTNF8
Protein Name :	Complement C1q tumor necrosis factor-related protein 8
Human Gene Id :	390664
Human Swiss Prot No :	P60827
Immunogen :	Synthesized peptide derived from the C-terminal region of human CTRP8.
Specificity :	CTRP8 Polyclonal Antibody detects endogenous levels of CTRP8 protein.
Formulation :	Liquid in PBS containing 50% glycerol, 0.5% BSA and 0.02% sodium azide.
Source :	Polyclonal, Rabbit,IgG
Dilution :	IHC 1:100 - 1:300. ELISA: 1:10000.. IF 1:50-200
Purification :	The antibody was affinity-purified from rabbit antiserum by affinity-chromatography using epitope-specific immunogen.
Concentration :	1 mg/ml
Storage Stability :	-15°C to -25°C/1 year(Do not lower than -25°C)
Molecularweight :	29kD
Background :	similarity:Contains 1 C1q domain.,similarity:Contains 1 collagen-like domain.,

Function :	<u>similarity:Contains 1 C1q domain.,similarity:Contains 1 collagen-like domain.,</u>
Subcellular Location :	<u>Secreted .</u>
Expression :	<u>Expressed predominantly in lung and testis (PubMed:19666007). Expressed in astrocytes (PubMed:24014093).</u>

Products Images



Immunohistochemical analysis of paraffin-embedded human tonsil. 1, Antibody was diluted at 1:200(4° overnight). 2, Tris-EDTA,pH9.0 was used for antigen retrieval. 3,Secondary antibody was diluted at 1:200(room temperature, 30min).