

Dvl-2 Polyclonal Antibody

Catalog No :	YT1424
Reactivity :	Human;Mouse
Applications :	WB;IHC;IF;ELISA
Target :	Dvl-2
Fields :	>>mTOR signaling pathway;>>Wnt signaling pathway;>>Notch signaling pathway;>>Hippo signaling pathway;>>Signaling pathways regulating pluripotency of stem cells;>>Melanogenesis;>>Cushing syndrome;>>Alzheimer disease;>>Pathways of neurodegeneration - multiple diseases;>>Human papillomavirus infection;>>Pathways in cancer;>>Basal cell carcinoma;>>Breast cancer;>>Hepatocellular carcinoma;>>Gastric cancer
Gene Name :	DVL2
Protein Name :	Segment polarity protein dishevelled homolog DVL-2
Human Gene Id :	1856
Human Swiss Prot No :	O14641
Mouse Gene Id :	13543
Mouse Swiss Prot No :	Q60838
Immunogen :	Synthesized peptide derived from Dvl-2 . at AA range: 670-750
Specificity :	Dvl-2 Polyclonal Antibody detects endogenous levels of Dvl-2 protein.
Formulation :	Liquid in PBS containing 50% glycerol, 0.5% BSA and 0.02% sodium azide.
Source :	Polyclonal, Rabbit,IgG
Dilution :	WB 1:500 - 1:2000. IHC 1:100 - 1:300. ELISA: 1:40000.. IF 1:50-200
Purification :	The antibody was affinity-purified from rabbit antiserum by affinity-

chromatography using epitope-specific immunogen.

Concentration : 1 mg/ml

Storage Stability : -15°C to -25°C/1 year(Do not lower than -25°C)

Observed Band : 80kD

Cell Pathway : WNT;WNT-T CELLNotch;Melanogenesis;Pathways in cancer;Colorectal cancer;Basal cell carcinoma;

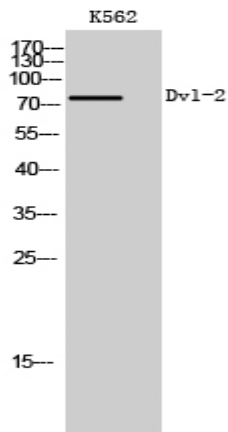
Background : This gene encodes a member of the dishevelled (dsh) protein family. The vertebrate dsh proteins have approximately 40% amino acid sequence similarity with Drosophila dsh. This gene encodes a 90-kD protein that undergoes posttranslational phosphorylation to form a 95-kD cytoplasmic protein, which may play a role in the signal transduction pathway mediated by multiple Wnt proteins. The mechanisms of dishevelled function in Wnt signaling are likely to be conserved among metazoans. [provided by RefSeq, Jul 2008],

Function : function:May play a role in the signal transduction pathway mediated by multiple Wnt genes.,PTM:Phosphorylated.,similarity:Belongs to the DSH family.,similarity:Contains 1 DEP domain.,similarity:Contains 1 DIX domain.,similarity:Contains 1 PDZ (DHR) domain.,subunit:Interacts through its PDZ domain with the C-terminal regions of VANGL1 and VANGL2 (By similarity). Interacts with DIXDC1 and Rac.,

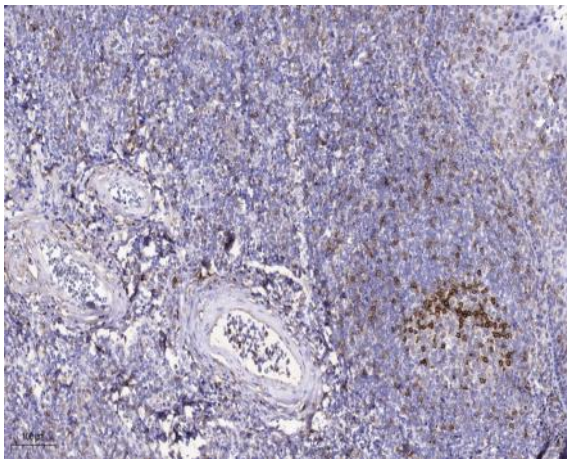
Subcellular Location : Cell membrane ; Peripheral membrane protein ; Cytoplasmic side . Cytoplasm, cytosol . Cytoplasmic vesicle . Nucleus . Localizes at the cell membrane upon interaction with frizzled family members and promotes their internalization. Localizes to cytoplasmic puncta (By similarity). Interaction with FOXK1 and FOXK2 induces nuclear translocation (PubMed:25805136) .

Expression : Colon,

Products Images



Western Blot analysis of K562 cells using Dv1-2 Polyclonal Antibody



Immunohistochemical analysis of paraffin-embedded human tonsil. 1, Antibody was diluted at 1:200(4° overnight). 2, Tris-EDTA,pH9.0 was used for antigen retrieval. 3,Secondary antibody was diluted at 1:200(room temperature, 45min).