

## Cyclin L1 Polyclonal Antibody

<b>Catalog No :</b>	YT1183
<b>Reactivity :</b>	Human;Mouse;Rat
<b>Applications :</b>	WB;IHC;IF;ELISA
<b>Target :</b>	Cyclin L1
<b>Gene Name :</b>	CCNL1
<b>Protein Name :</b>	Cyclin-L1
<b>Human Gene Id :</b>	57018
<b>Human Swiss Prot No :</b>	Q9UK58
<b>Mouse Gene Id :</b>	56706
<b>Mouse Swiss Prot No :</b>	Q52KE7
<b>Rat Gene Id :</b>	1.0091e+008
<b>Rat Swiss Prot No :</b>	Q9R1Q2
<b>Immunogen :</b>	The antiserum was produced against synthesized peptide derived from human Cyclin L1. AA range:461-510
<b>Specificity :</b>	Cyclin L1 Polyclonal Antibody detects endogenous levels of Cyclin L1 protein.
<b>Formulation :</b>	Liquid in PBS containing 50% glycerol, 0.5% BSA and 0.02% sodium azide.
<b>Source :</b>	Polyclonal, Rabbit,IgG
<b>Dilution :</b>	WB 1:500 - 1:2000. IHC 1:100 - 1:300. ELISA: 1:10000.. IF 1:50-200
<b>Purification :</b>	The antibody was affinity-purified from rabbit antiserum by affinity-chromatography using epitope-specific immunogen.

**Concentration :** 1 mg/ml

---

**Storage Stability :** -15°C to -25°C/1 year(Do not lower than -25°C)

---

**Observed Band :** 60kD

---

**Background :** alternative products:Ccn1 is an immediate-early gene with independently regulated isoforms, domain:Contains a RS region (arginine-serine dipeptide repeat) within the C-terminal domain which is the hallmark of the SR family of splicing factors. This region probably plays a role in protein-protein interactions., function:Transcriptional regulator which participates in regulating the pre-mRNA splicing process. Seems to be involved in the regulation of RNA polymerase II (pol II). Functions in association with cyclin-dependent kinases (CDKs) and has a role in the second step of splicing. May be a candidate proto-oncogene in head and neck squamous cell carcinomas (HNSCC). Inhibited by the CDK-specific inhibitor p21., miscellaneous:CCNL1 is amplified in several HNSCC. May play a critical role in the formation of loco-regional metastases and an unfavorable clinical outcome of HNSCC., sequence caution:Probable cloning artifact., similarity:Belongs to the cyclin family. Cyclin L subfamily., subcellular location:More specifically found in nuclear intrachromatin granules clusters (IGC), also called nuclear speckles, which are storage compartments for nuclear proteins involved in mRNA processing., subunit:Interacts with POLR2A via its hyperphosphorylated C-terminal domain (CTD) (By similarity). Interacts with CDC2L1 or CDC2L2, and SFRS2., tissue specificity:Ubiquitous with higher level in thymus. Overexpression in primary tumors of head and neck squamous cell carcinomas (HNSCC).

---

**Function :** alternative products:Ccn1 is an immediate-early gene with independently regulated isoforms, domain:Contains a RS region (arginine-serine dipeptide repeat) within the C-terminal domain which is the hallmark of the SR family of splicing factors. This region probably plays a role in protein-protein interactions., function:Transcriptional regulator which participates in regulating the pre-mRNA splicing process. Seems to be involved in the regulation of RNA polymerase II (pol II). Functions in association with cyclin-dependent kinases (CDKs) and has a role in the second step of splicing. May be a candidate proto-oncogene in head and neck squamous cell carcinomas (HNSCC). Inhibited by the CDK-specific inhibitor p21., miscellaneous:CCNL1 is amplified in several HNSCC. May play a critical role in the formation of loco-regional metastases and an unfavorable clinical outcome of HNSCC., sequence cauti

---

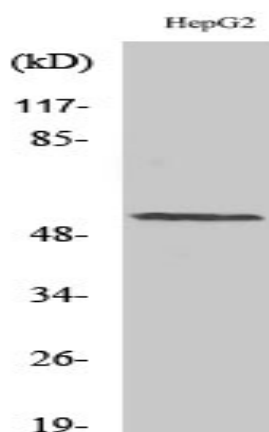
**Subcellular Location :** Nucleus speckle . Nucleus, nucleoplasm . Found in nuclear intrachromatin granules clusters (IGC), also called nuclear speckles, which are storage compartments for nuclear proteins involved in mRNA processing. .

---

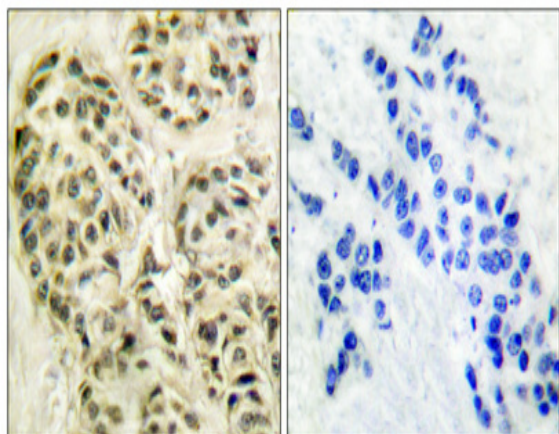
**Expression :** Widely expressed. Overexpression in primary tumors of head and neck squamous cell carcinomas (HNSCC).

---

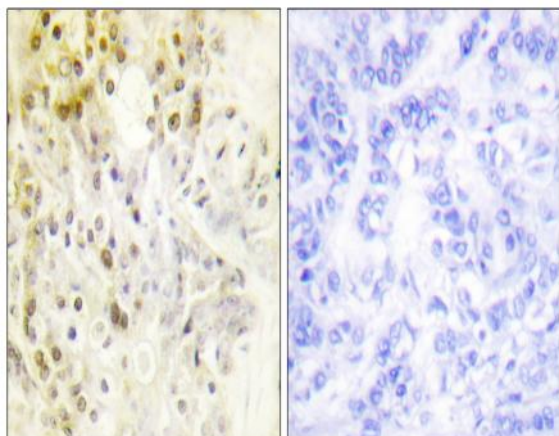
## Products Images



Western Blot analysis of various cells using Cyclin L1 Polyclonal Antibody diluted at 1:1000 cells nucleus extracted by Minute TM Cytoplasmic and Nuclear Fractionation kit (SC-003, Inventbiotech, MN, USA).



Immunohistochemical analysis of paraffin-embedded Human breast cancer. Antibody was diluted at 1:100 (4° overnight). High-pressure and temperature Tris-EDTA, pH 8.0 was used for antigen retrieval. Negative control (right) obtained from antibody was pre-absorbed by immunogen peptide.



Immunohistochemistry analysis of paraffin-embedded human breast carcinoma tissue, using Cyclin L1 Antibody. The picture on the right is blocked with the synthesized peptide.

