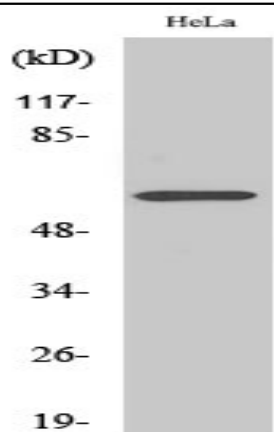


CYP2U1 Polyclonal Antibody

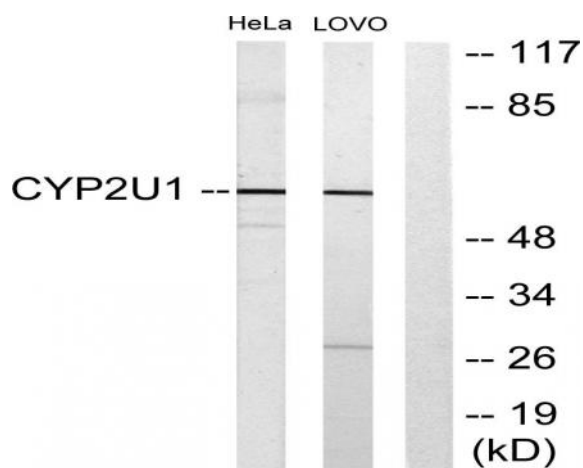
Catalog No :	YT1224
Reactivity :	Human;Mouse;Rat
Applications :	WB;IHC;IF;ELISA
Target :	CYP2U1
Fields :	>>Fatty acid degradation;>>Arachidonic acid metabolism;>>Metabolic pathways
Gene Name :	CYP2U1
Protein Name :	Cytochrome P450 2U1
Human Gene Id :	113612
Human Swiss Prot No :	Q7Z449
Mouse Gene Id :	71519
Mouse Swiss Prot No :	Q9CX98
Rat Gene Id :	310848
Rat Swiss Prot No :	Q4V8D1
Immunogen :	The antiserum was produced against synthesized peptide derived from human Cytochrome P450 2U1. AA range:281-330
Specificity :	CYP2U1 Polyclonal Antibody detects endogenous levels of CYP2U1 protein.
Formulation :	Liquid in PBS containing 50% glycerol, 0.5% BSA and 0.02% sodium azide.
Source :	Polyclonal, Rabbit,IgG
Dilution :	WB 1:500 - 1:2000. IHC 1:100 - 1:300. IF 1:200 - 1:1000. ELISA: 1:20000. Not yet tested in other applications.

Purification :	The antibody was affinity-purified from rabbit antiserum by affinity-chromatography using epitope-specific immunogen.
Concentration :	1 mg/ml
Storage Stability :	-15°C to -25°C/1 year(Do not lower than -25°C)
Observed Band :	61kD
Cell Pathway :	Arachidonic acid metabolism;
Background :	This gene encodes a member of the cytochrome P450 superfamily of enzymes. The cytochrome P450 proteins are monooxygenases which catalyze many reactions involved in drug metabolism and synthesis of cholesterol, steroids and other lipids. This enzyme is a hydroxylase that metabolizes arachidonic acid, docosahexaenoic acid, and other long chain fatty acids. [provided by RefSeq, Jul 2008],
Function :	catalytic activity:RH + reduced flavoprotein + O(2) = ROH + oxidized flavoprotein + H(2)O.,cofactor:Heme group.,developmental stage:Expressed in fetal thymus.,function:Catalyzes the hydroxylation of arachidonic acid, docosahexaenoic acid and other long chain fatty acids. May modulate the arachidonic acid signaling pathway and play a role in other fatty acid signaling processes.,similarity:Belongs to the cytochrome P450 family.,tissue specificity:Widely expressed with stronger expression in thymus, heart and cerebellum.,
Subcellular Location :	Endoplasmic reticulum membrane ; Multi-pass membrane protein . Microsome membrane ; Multi-pass membrane protein . Mitochondrion inner membrane ; Multi-pass membrane protein .
Expression :	Widely expressed with stronger expression in thymus, heart and cerebellum.

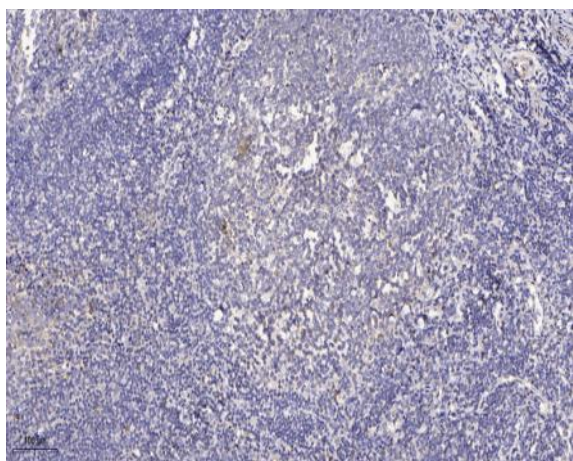
Products Images



Western Blot analysis of various cells using CYP2U1 Polyclonal Antibody



Western blot analysis of lysates from HeLa and Lovo cells, using Cytochrome P450 2U1 Antibody. The lane on the right is blocked with the synthesized peptide.



Immunohistochemical analysis of paraffin-embedded human tonsil. 1, Antibody was diluted at 1:200(4° overnight). 2, Tris-EDTA,pH9.0 was used for antigen retrieval. 3,Secondary antibody was diluted at 1:200(room temperature, 30min).