

## Endo G-L1 Polyclonal Antibody

<b>Catalog No :</b>	YT1555
<b>Reactivity :</b>	Human;Mouse
<b>Applications :</b>	WB;ELISA
<b>Target :</b>	Endo G-L1
<b>Gene Name :</b>	EXOG
<b>Protein Name :</b>	Nuclease EXOG mitochondrial
<b>Human Gene Id :</b>	9941
<b>Human Swiss Prot No :</b>	Q9Y2C4
<b>Mouse Swiss Prot No :</b>	Q8C163
<b>Immunogen :</b>	The antiserum was produced against synthesized peptide derived from human ENDOGL1. AA range:171-220
<b>Specificity :</b>	Endo G-L1 Polyclonal Antibody detects endogenous levels of Endo G-L1 protein.
<b>Formulation :</b>	Liquid in PBS containing 50% glycerol, 0.5% BSA and 0.02% sodium azide.
<b>Source :</b>	Polyclonal, Rabbit,IgG
<b>Dilution :</b>	WB 1:500 - 1:2000. ELISA: 1:40000. Not yet tested in other applications.
<b>Purification :</b>	The antibody was affinity-purified from rabbit antiserum by affinity-chromatography using epitope-specific immunogen.
<b>Concentration :</b>	1 mg/ml
<b>Storage Stability :</b>	-15°C to -25°C/1 year(Do not lower than -25°C)
<b>Observed Band :</b>	41kD

**Cell Pathway :** Apoptosis\_Inhibition;Apoptosis\_Mitochondrial;Apoptosis\_Overview;

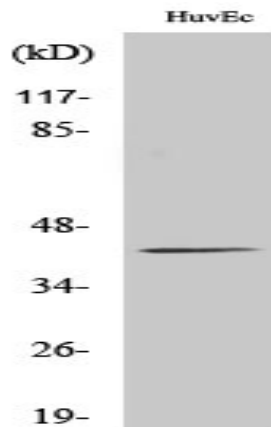
**Background :** This gene encodes an endo/exonuclease with 5'-3' exonuclease activity. The encoded enzyme catalyzes the hydrolysis of ester linkages at the 5' end of a nucleic acid chain. This enzyme is localized to the mitochondria and may play a role in programmed cell death. Alternatively spliced transcript variants have been described. A pseudogene exists on chromosome 18. [provided by RefSeq, Feb 2009],

**Function :** cofactor:Divalent metal cations.,function:Endo/exonuclease with nicking activity towards supercoiled DNA, a preference for single stranded DNA and 5'-3' exonuclease activity.,miscellaneous:The active site contains 1 hydrated divalent metal cation that has only 1 direct interaction with the protein; all other interactions are via water molecules.,similarity:Belongs to the DNA/RNA non-specific endonuclease family.,subunit:Homodimer.,tissue specificity:Ubiquitous.,

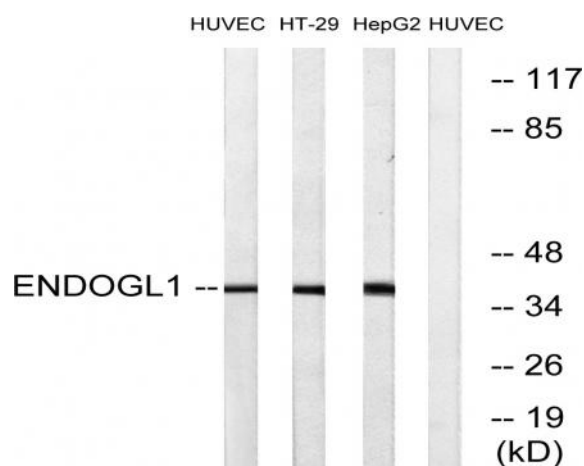
**Subcellular Location :** Mitochondrion inner membrane .

**Expression :** Ubiquitous.

## Products Images



Western Blot analysis of various cells using Endo G-L1 Polyclonal Antibody



Western blot analysis of lysates from HUVEC, HT-29, and HepG2 cells, using ENDOGL1 Antibody. The lane on the right is blocked with the synthesized peptide.