

D55 Polyclonal Antibody

Catalog No :	YT1280
Reactivity :	Human
Applications :	IHC;IF;ELISA
Target :	D55
Gene Name :	TPD52L3
Protein Name :	Tumor protein D55
Human Gene Id :	89882
Human Swiss Prot No :	Q96J77
Immunogen :	The antiserum was produced against synthesized peptide derived from human TPD52L3. AA range:10-59
Specificity :	D55 Polyclonal Antibody detects endogenous levels of D55 protein.
Formulation :	Liquid in PBS containing 50% glycerol, 0.5% BSA and 0.02% sodium azide.
Source :	Polyclonal, Rabbit,IgG
Dilution :	IHC 1:100 - 1:300. ELISA: 1:20000.. IF 1:50-200
Purification :	The antibody was affinity-purified from rabbit antiserum by affinity-chromatography using epitope-specific immunogen.
Concentration :	1 mg/ml
Storage Stability :	-15°C to -25°C/1 year(Do not lower than -25°C)
Molecularweight :	15kD
Background :	This gene encodes a member of the tumor protein D52-like family of proteins. These proteins are characterized by an N-terminal coiled-coil motif that is used to

form homo- and heteromeric complexes with other tumor protein D52-like proteins. The encoded protein may play a role in spermatogenesis. Alternative splicing results in multiple transcript variants. [provided by RefSeq, Oct 2009],

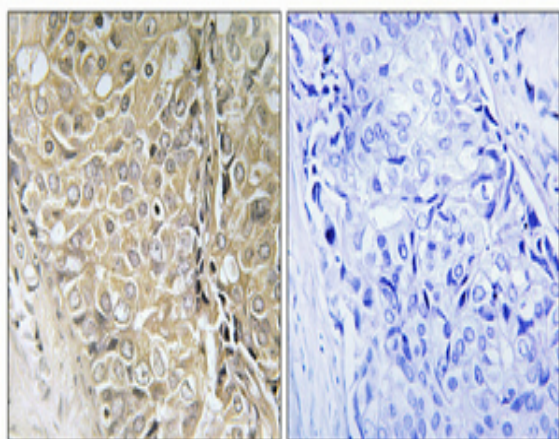
Function :

similarity:Belongs to the TPD52 family.,tissue specificity:Specifically expressed in testis. Expressed at 5.6-fold higher levels in adult testis than in fetal testis.,

Expression :

Specifically expressed in testis. Expressed at 5.6-fold higher levels in adult testis than in fetal testis.

Products Images



Immunohistochemical analysis of paraffin-embedded Human prostate cancer. Antibody was diluted at 1:100(4° overnight). High-pressure and temperature Tris-EDTA,pH8.0 was used for antigen retrieval. Negative contrl (right) obtaned from antibody was pre-absorbed by immunogen peptide.