

DBC-1 Polyclonal Antibody

Catalog No :	YT1294
Reactivity :	Human;Mouse
Applications :	WB;IHC;IF;ELISA
Target :	DBC1
Gene Name :	KIAA1967
Protein Name :	DBIRD complex subunit KIAA1967
Human Gene Id :	57805
Human Swiss Prot No :	Q8N163
Mouse Swiss Prot No :	Q8VDP4
Immunogen :	The antiserum was produced against synthesized peptide derived from human KIAA1967. AA range:431-480
Specificity :	DBC-1 Polyclonal Antibody detects endogenous levels of DBC-1 protein.
Formulation :	Liquid in PBS containing 50% glycerol, 0.5% BSA and 0.02% sodium azide.
Source :	Polyclonal, Rabbit,IgG
Dilution :	WB 1:500 - 1:2000. ELISA: 1:20000.. IF 1:50-200
Purification :	The antibody was affinity-purified from rabbit antiserum by affinity-chromatography using epitope-specific immunogen.
Concentration :	1 mg/ml
Storage Stability :	-15°C to -25°C/1 year(Do not lower than -25°C)
Observed Band :	102kD

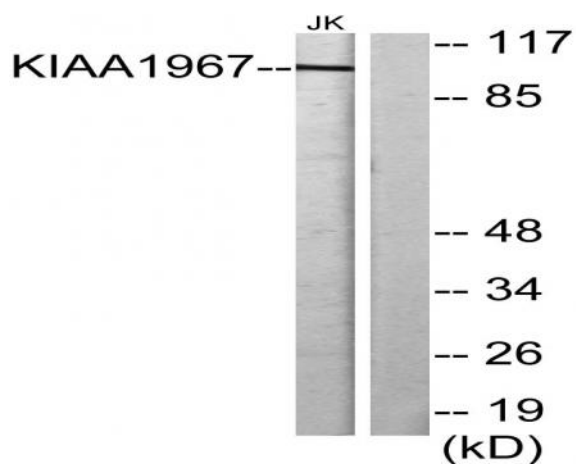
Background : tissue specificity:Expressed ubiquitously in normal tissues. Expressed in 84 to 100% of neoplastic breast, lung, and colon tissues.,

Function : tissue specificity:Expressed ubiquitously in normal tissues. Expressed in 84 to 100% of neoplastic breast, lung, and colon tissues.,

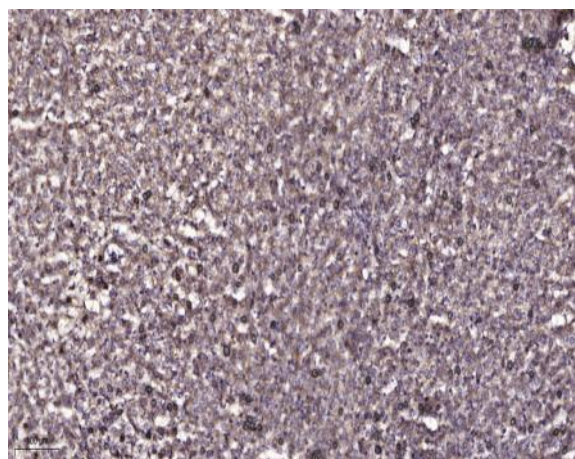
Subcellular Location : Nucleus . Cytoplasm . Cytoplasm, cytoskeleton, spindle . Recruited to chromatin, post-UV irradiation. Sequestered to the cytoplasm in the presence of MCC. Translocated to the cytoplasm during UV-induced apoptosis. .

Expression : Expressed in gastric carcinoma tissue and the expression gradually increases with the progression of the carcinoma (at protein level). Expressed ubiquitously in normal tissues. Expressed in 84 to 100% of neoplastic breast, lung, and colon tissues.

Products Images



Western blot analysis of lysates from Jurkat cells, using KIAA1967 Antibody. The lane on the right is blocked with the synthesized peptide.



Immunohistochemical analysis of paraffin-embedded human liver cancer. 1, Antibody was diluted at 1:200(4° overnight). 2, Tris-EDTA,pH9.0 was used for antigen retrieval. 3,Secondary antibody was diluted at 1:200(room temperature, 45min).