

DCAMKL3 Polyclonal Antibody

Catalog No :	YT1299
Reactivity :	Human;Mouse
Applications :	WB;IHC;IF;ELISA
Target :	DCAMKL3
Gene Name :	DCLK3
Protein Name :	Serine/threonine-protein kinase DCLK3
Human Gene Id :	85443
Human Swiss Prot No :	Q9C098
Mouse Swiss Prot No :	Q8BWQ5
Immunogen :	The antiserum was produced against synthesized peptide derived from human DCLK3. AA range:291-340
Specificity :	DCAMKL3 Polyclonal Antibody detects endogenous levels of DCAMKL3 protein.
Formulation :	Liquid in PBS containing 50% glycerol, 0.5% BSA and 0.02% sodium azide.
Source :	Polyclonal, Rabbit,IgG
Dilution :	WB 1:500 - 1:2000. IHC 1:100 - 1:300. ELISA: 1:5000.. IF 1:50-200
Purification :	The antibody was affinity-purified from rabbit antiserum by affinity-chromatography using epitope-specific immunogen.
Concentration :	1 mg/ml
Storage Stability :	-15°C to -25°C/1 year(Do not lower than -25°C)
Observed Band :	73kD

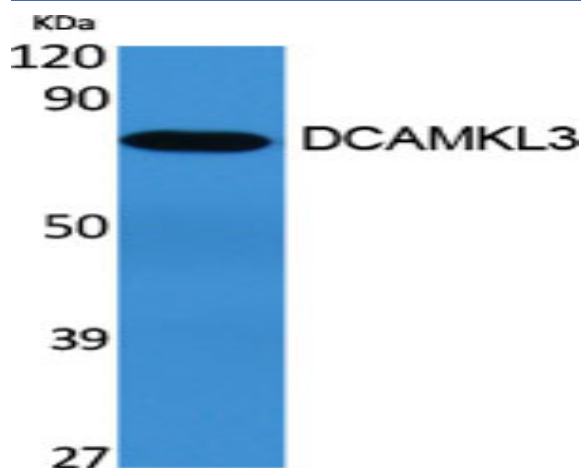
Background : catalytic activity:ATP + a protein = ADP + a phosphoprotein.,similarity:Belongs to the protein kinase superfamily.,similarity:Belongs to the protein kinase superfamily. CAMK Ser/Thr protein kinase family. CaMK subfamily.,similarity:Contains 1 protein kinase domain.,

Function : catalytic activity:ATP + a protein = ADP + a phosphoprotein.,similarity:Belongs to the protein kinase superfamily.,similarity:Belongs to the protein kinase superfamily. CAMK Ser/Thr protein kinase family. CaMK subfamily.,similarity:Contains 1 protein kinase domain.,

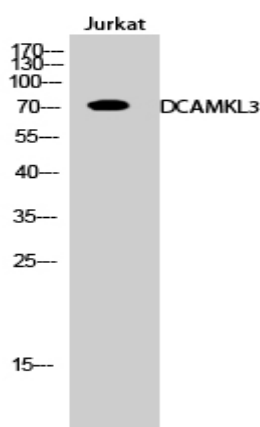
Subcellular Location : Cytoplasm . Nucleus .

Expression : Brain,

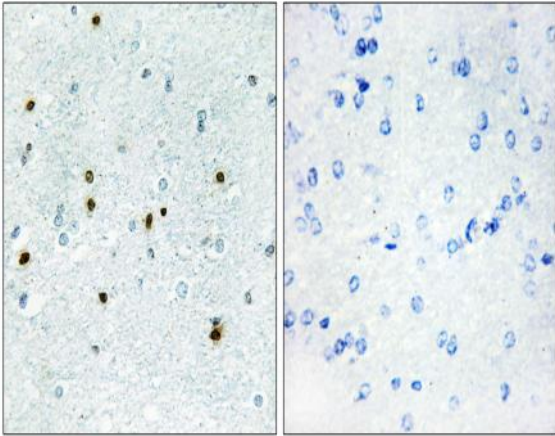
Products Images



Western Blot analysis of various cells using DCAMKL3 Polyclonal Antibody



Western Blot analysis of Jurkat cells using DCAMKL3 Polyclonal Antibody



Immunohistochemistry analysis of paraffin-embedded human brain, using DCLK3 Antibody. The picture on the right is blocked with the synthesized peptide.