

DLC-1 Polyclonal Antibody

Catalog No :	YT1356
Reactivity :	Human;Mouse;Rat
Applications :	IHC;IF;ELISA
Target :	DLC-1
Gene Name :	DLC1
Protein Name :	Rho GTPase-activating protein 7
Human Gene Id :	10395
Human Swiss Prot No :	Q96QB1
Mouse Gene Id :	50768
Mouse Swiss Prot No :	Q9R0Z9
Rat Swiss Prot No :	Q63744
Immunogen :	The antiserum was produced against synthesized peptide derived from human RHG07. AA range:61-110
Specificity :	DLC-1 Polyclonal Antibody detects endogenous levels of DLC-1 protein.
Formulation :	Liquid in PBS containing 50% glycerol, 0.5% BSA and 0.02% sodium azide.
Source :	Polyclonal, Rabbit,IgG
Dilution :	IHC 1:100 - 1:300. IF 1:200 - 1:1000. ELISA: 1:10000. Not yet tested in other applications.
Purification :	The antibody was affinity-purified from rabbit antiserum by affinity-chromatography using epitope-specific immunogen.
Concentration :	1 mg/ml

Storage Stability : -15°C to -25°C/1 year(Do not lower than -25°C)

Molecularweight : 123kD

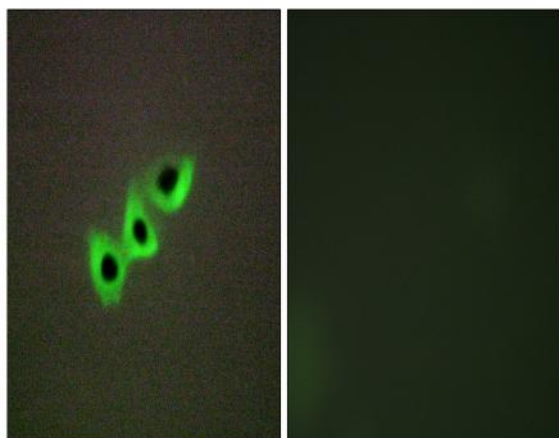
Background : This gene encodes a GTPase-activating protein (GAP) that is a member of the rhoGAP family of proteins which play a role in the regulation of small GTP-binding proteins. GAP family proteins participate in signaling pathways that regulate cell processes involved in cytoskeletal changes. This gene functions as a tumor suppressor gene in a number of common cancers, including prostate, lung, colorectal, and breast cancers. Multiple transcript variants due to alternative promoters and alternative splicing have been found for this gene.[provided by RefSeq, Apr 2010],

Function : function:Functions as a GTPase-activating protein specific for Rho and an activator of PLCD1 in vivo and induces morphological changes and detachment through cytoskeletal reorganization.,sequence caution:Chimera. Sequence from position 1 to 13 is due to a chimera.,similarity:Contains 1 Rho-GAP domain.,similarity:Contains 1 SAM (sterile alpha motif) domain.,similarity:Contains 1 START domain.,tissue specificity:Highest level of expression in the spleen, with rather lower levels in prostate, testis, ovary, small intestine and colon, but none in the thymus.,

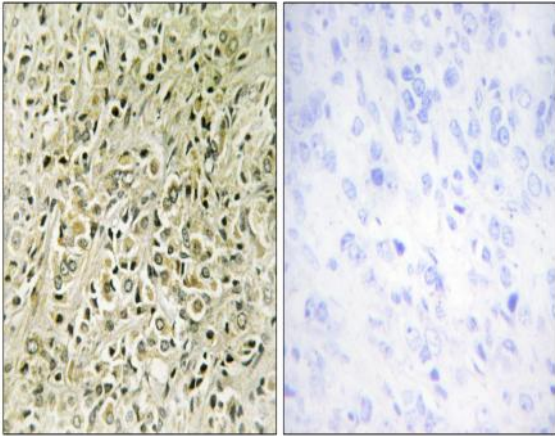
Subcellular Location : Cytoplasm. Cell junction, focal adhesion. Membrane; Peripheral membrane protein. Colocalizes with EF1A1 at actin-rich regions in the cell periphery.

Expression : Highest level of expression in the spleen, with rather lower levels in prostate, testis, ovary, small intestine and colon, but none in the thymus.

Products Images



Immunofluorescence analysis of A549 cells, using RHG07 Antibody. The picture on the right is blocked with the synthesized peptide.



Immunohistochemistry analysis of paraffin-embedded human prostate carcinoma tissue, using RHG07 Antibody. The picture on the right is blocked with the synthesized peptide.