

FASTKD3 Polyclonal Antibody

Catalog No :	YT1682
Reactivity :	Human;Rat;Mouse;
Applications :	WB;IHC;IF;ELISA
Target :	FASTKD3
Gene Name :	FASTKD3
Protein Name :	FAST kinase domain-containing protein 3
Human Gene Id :	79072
Human Swiss Prot No :	Q14CZ7
Mouse Swiss Prot No :	Q8BSN9
Immunogen :	The antiserum was produced against synthesized peptide derived from human FAKD3. AA range:121-170
Specificity :	FASTKD3 Polyclonal Antibody detects endogenous levels of FASTKD3 protein.
Formulation :	Liquid in PBS containing 50% glycerol, 0.5% BSA and 0.02% sodium azide.
Source :	Polyclonal, Rabbit,IgG
Dilution :	WB 1:500 - 1:2000. IHC 1:100 - 1:300. ELISA: 1:20000.. IF 1:50-200
Purification :	The antibody was affinity-purified from rabbit antiserum by affinity-chromatography using epitope-specific immunogen.
Concentration :	1 mg/ml
Storage Stability :	-15°C to -25°C/1 year(Do not lower than -25°C)
Observed Band :	75kD

Background :

This gene encodes a member of a small family of Fas-activated serine/threonine kinase domain (FASTKD) containing proteins that share an amino terminal mitochondrial targeting domain and multiple carboxy terminal FAST domains as well as a putative RNA-binding RAP domain. The members of this family are ubiquitously expressed and are generally most abundant in mitochondria-enriched tissues such as heart, skeletal muscle and brown-adipose tissue. Some members of this protein family may play a role in apoptosis. The protein encoded by this gene interacts with components of the mitochondrial respiratory and translation networks. A pseudogene of this gene is also present on chromosome 5. Alternative splicing results in multiple transcript variants. [provided by RefSeq, Jan 2013],

Function :

similarity:Belongs to the FAST kinase family.,similarity:Contains 1 RAP domain.,

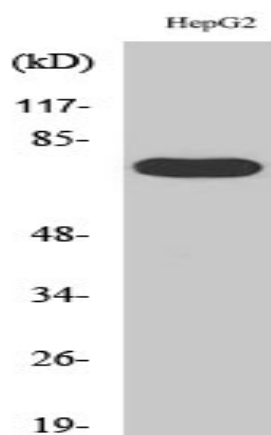
Subcellular Location :

Mitochondrion .

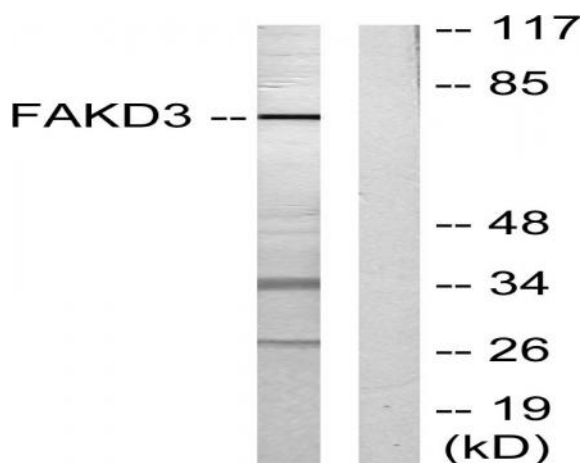
Expression :

Expression detected in spleen, thymus, testis, ovary, colon, heart, smooth muscle, kidney, brain, lung, liver and white adipose tissue with highest expression in liver and thyroid.

Products Images



Western Blot analysis of various cells using FASTKD3 Polyclonal Antibody



Western blot analysis of lysates from HepG2 cells, using FAKD3 Antibody. The lane on the right is blocked with the synthesized peptide.