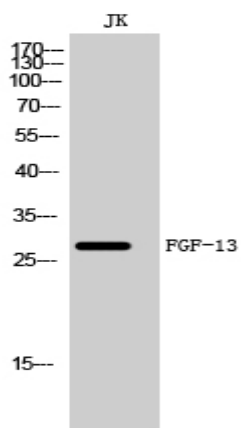


FGF-13 Polyclonal Antibody

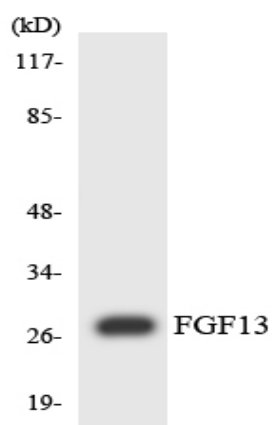
Catalog No :	YT1696
Reactivity :	Human;Mouse;Rat
Applications :	WB;ELISA
Target :	FGF-13
Gene Name :	FGF13
Protein Name :	Fibroblast growth factor 13
Human Gene Id :	2258
Human Swiss Prot No :	Q92913
Mouse Gene Id :	14168
Mouse Swiss Prot No :	P70377
Rat Gene Id :	84488
Rat Swiss Prot No :	Q9ERW3
Immunogen :	The antiserum was produced against synthesized peptide derived from human FGF13. AA range:154-203
Specificity :	FGF-13 Polyclonal Antibody detects endogenous levels of FGF-13 protein.
Formulation :	Liquid in PBS containing 50% glycerol, 0.5% BSA and 0.02% sodium azide.
Source :	Polyclonal, Rabbit,IgG
Dilution :	WB 1:500 - 1:2000. ELISA: 1:5000. Not yet tested in other applications.
Purification :	The antibody was affinity-purified from rabbit antiserum by affinity-chromatography using epitope-specific immunogen.

Concentration :	1 mg/ml
Storage Stability :	-15°C to -25°C/1 year(Do not lower than -25°C)
Observed Band :	28kD
Cell Pathway :	MAPK_ERK_Growth;MAPK_G_Protein;Regulates Actin and Cytoskeleton;Pathways in cancer;Melanoma;
Background :	<p>The protein encoded by this gene is a member of the fibroblast growth factor (FGF) family. FGF family members possess broad mitogenic and cell survival activities, and are involved in a variety of biological processes, including embryonic development, cell growth, morphogenesis, tissue repair, tumor growth, and invasion. This gene is located in a region on chromosome X, which is associated with Borjeson-Forssman-Lehmann syndrome (BFLS), making it a possible candidate gene for familial cases of the BFLS, and for other syndromal and nonspecific forms of X-linked mental retardation mapping to this region. Alternative splicing of this gene at the 5' end results in several transcript variants encoding different isoforms with different N-termini. [provided by RefSeq, Nov 2008],</p>
Function :	<p>function:Probably involved in nervous system development and function.,similarity:Belongs to the heparin-binding growth factors family.,tissue specificity:Nervous system.,</p>
Subcellular Location :	<p>[Isoform 1]: Nucleus .; [Isoform 2]: Cytoplasm . Nucleus .; [Isoform 3]: Cytoplasm . Nucleus .; [Isoform 4]: Cytoplasm . Nucleus .; [Isoform 5]: Cytoplasm . Nucleus .; Cell projection, filopodium . Cell projection, growth cone . Cell projection, dendrite . Cell membrane, sarcolemma . Cytoplasm . Not secreted. Localizes to the lateral membrane and intercalated disks of myocytes. .</p>
Expression :	Ubiquitously expressed. Predominantly expressed in the nervous system.

Products Images



Western Blot analysis of JK cells using FGF-13 Polyclonal Antibody diluted at 1:500



Western blot analysis of the lysates from Jurkat cells using FGF13 antibody.