

GFRP Polyclonal Antibody

Catalog No :	YT1895
Reactivity :	Human;Rat
Applications :	IHC;IF;ELISA
Target :	GFRP
Gene Name :	GCHFR
Protein Name :	GTP cyclohydrolase 1 feedback regulatory protein
Human Gene Id :	2644
Human Swiss Prot No :	P30047
Mouse Swiss Prot No :	P99025
Rat Gene Id :	171128
Rat Swiss Prot No :	P70552
Immunogen :	The antiserum was produced against synthesized peptide derived from human GCHFR. AA range:31-80
Specificity :	GFRP Polyclonal Antibody detects endogenous levels of GFRP protein.
Formulation :	Liquid in PBS containing 50% glycerol, 0.5% BSA and 0.02% sodium azide.
Source :	Polyclonal, Rabbit,IgG
Dilution :	IHC 1:100 - 1:300. ELISA: 1:10000.. IF 1:50-200
Purification :	The antibody was affinity-purified from rabbit antiserum by affinity-chromatography using epitope-specific immunogen.
Concentration :	1 mg/ml

Storage Stability : -15°C to -25°C/1 year (Do not lower than -25°C)

Molecularweight : 10kD

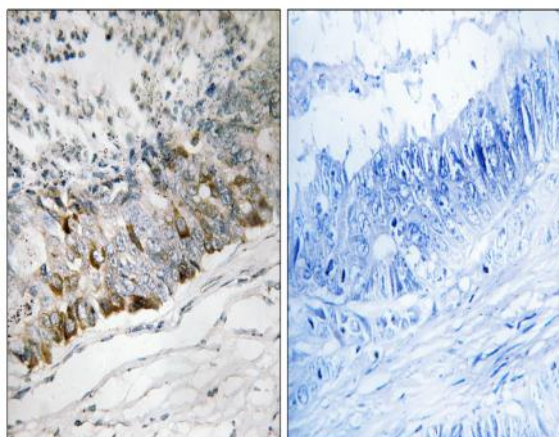
Background : GTP cyclohydrolase I feedback regulatory protein binds to and mediates tetrahydrobiopterin inhibition of GTP cyclohydrolase I. The regulatory protein, GCHFR, consists of a homodimer. It is postulated that GCHFR may play a role in regulating phenylalanine metabolism in the liver and in the production of biogenic amine neurotransmitters and nitric oxide. [provided by RefSeq, Jul 2008],

Function : function:Mediates tetrahydrobiopterin inhibition of GTP cyclohydrolase 1. This inhibition is reversed by L-phenylalanine.,similarity:Belongs to the GFRP family.,subunit:Homopentamer. Forms a complex with GCH1 where a GCH1 homodecamer is sandwiched by two GFRP homopentamers (By similarity). Interacts with GCH1.,tissue specificity:In epidermis, expressed predominantly in basal undifferentiated keratinocytes and in some but not all melanocytes (at protein level).,

Subcellular Location : Nucleus . Nucleus membrane . Cytoplasm, cytosol .

Expression : In epidermis, expressed predominantly in basal undifferentiated keratinocytes and in some but not all melanocytes (at protein level).

Products Images



Immunohistochemistry analysis of paraffin-embedded human colon carcinoma tissue, using GCHFR Antibody. The picture on the right is blocked with the synthesized peptide.