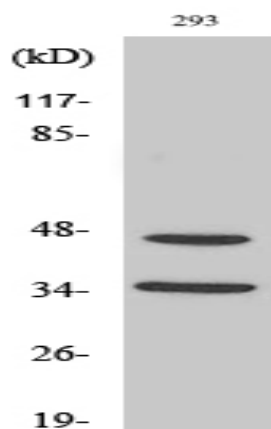


**FoxB1/2 Polyclonal Antibody**

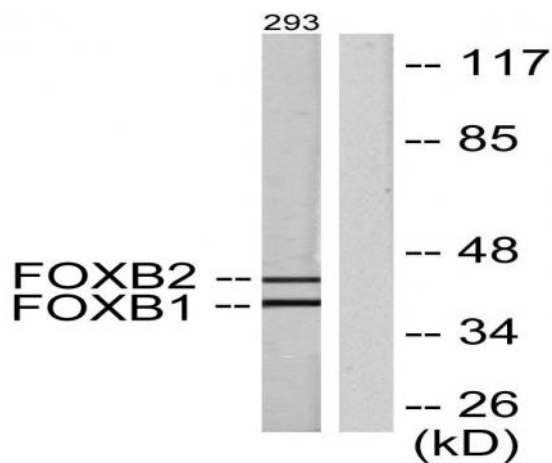
<b>Catalog No :</b>	YT1740
<b>Reactivity :</b>	Human;Mouse
<b>Applications :</b>	WB;IHC;IF;ELISA
<b>Target :</b>	FoxB1/2
<b>Gene Name :</b>	FOXB1/FOXB2
<b>Protein Name :</b>	Forkhead box protein B1/2
<b>Human Gene Id :</b>	27023/442425
<b>Human Swiss Prot No :</b>	Q99853/Q5VYV0
<b>Mouse Gene Id :</b>	64290/14240
<b>Immunogen :</b>	The antiserum was produced against synthesized peptide derived from human FOXB1/2. AA range:51-100
<b>Specificity :</b>	FoxB1/2 Polyclonal Antibody detects endogenous levels of FoxB1/2 protein.
<b>Formulation :</b>	Liquid in PBS containing 50% glycerol, 0.5% BSA and 0.02% sodium azide.
<b>Source :</b>	Polyclonal, Rabbit,IgG
<b>Dilution :</b>	WB 1:500 - 1:2000. IHC 1:100 - 1:300. ELISA: 1:20000.. IF 1:50-200
<b>Purification :</b>	The antibody was affinity-purified from rabbit antiserum by affinity-chromatography using epitope-specific immunogen.
<b>Concentration :</b>	1 mg/ml
<b>Storage Stability :</b>	-15°C to -25°C/1 year(Do not lower than -25°C)
<b>Observed Band :</b>	45kD

<b>Background :</b>	similarity:Contains 1 fork-head DNA-binding domain.,
<b>Function :</b>	similarity:Contains 1 fork-head DNA-binding domain.,
<b>Subcellular Location :</b>	Nucleus .
<b>Expression :</b>	Lung,Placenta,

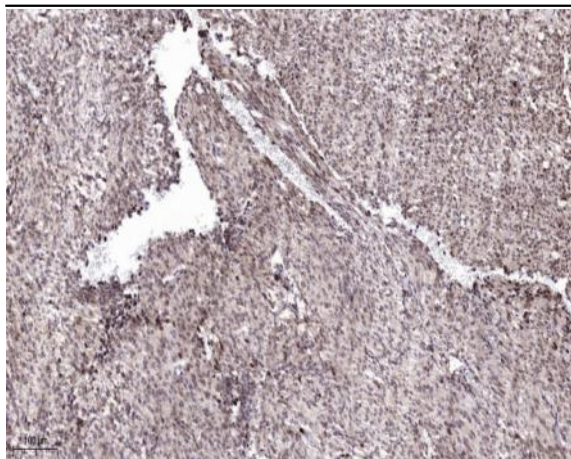
## Products Images



Western Blot analysis of various cells using FoxB1/2 Polyclonal Antibody cells nucleus extracted by Minute TM Cytoplasmic and Nuclear Fractionation kit (SC-003, Inventbiotech, MN, USA).



Western blot analysis of lysates from 293 cells, using FOXB1/2 Antibody. The lane on the right is blocked with the synthesized peptide.



Immunohistochemical analysis of paraffin-embedded human Colon cancer. 1, Antibody was diluted at 1:200(4° overnight). 2, Tris-EDTA,pH9.0 was used for antigen retrieval. 3,Secondary antibody was diluted at 1:200(room temperature, 45min).