

EAT-2 Polyclonal Antibody

Catalog No :	YT1451
Reactivity :	Human;Mouse
Applications :	IHC;IF;ELISA
Target :	EAT-2
Fields :	>>Natural killer cell mediated cytotoxicity
Gene Name :	SH2D1B
Protein Name :	SH2 domain-containing protein 1B
Human Gene Id :	117157
Human Swiss Prot No :	O14796
Mouse Swiss Prot No :	O35324
Immunogen :	The antiserum was produced against synthesized peptide derived from human SH2D1B. AA range:71-120
Specificity :	EAT-2 Polyclonal Antibody detects endogenous levels of EAT-2 protein.
Formulation :	Liquid in PBS containing 50% glycerol, 0.5% BSA and 0.02% sodium azide.
Source :	Polyclonal, Rabbit,IgG
Dilution :	IHC 1:100 - 1:300. ELISA: 1:40000.. IF 1:50-200
Purification :	The antibody was affinity-purified from rabbit antiserum by affinity-chromatography using epitope-specific immunogen.
Concentration :	1 mg/ml
Storage Stability :	-15°C to -25°C/1 year(Do not lower than -25°C)

Molecularweight : 15kD

Cell Pathway : Natural killer cell mediated cytotoxicity;

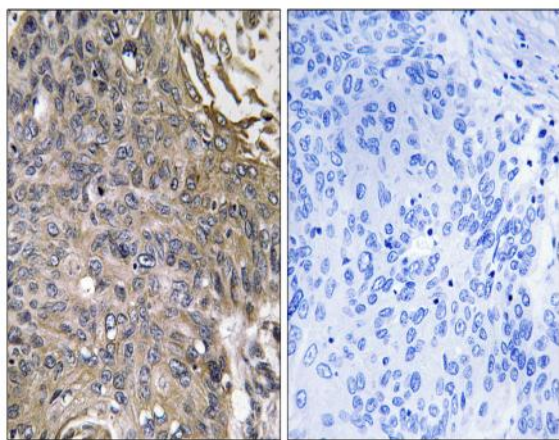
Background : By binding phosphotyrosines through its free SRC (MIM 190090) homology-2 (SH2) domain, EAT2 regulates signal transduction through receptors expressed on the surface of antigen-presenting cells (Morra et al., 2001 [PubMed 11689425]).[supplied by OMIM, Mar 2008],

Function : function:Plays a role in controlling signal transduction through at least four receptors, CD84, CD150, CD229 and CD244, expressed on the surface of professional antigen-presenting cells.,similarity:Contains 1 SH2 domain.,subunit:Binds to the phosphorylated receptors CD84, CD150, CD229 and CD244. Does not bind to non-phosphorylated CD150.,

Subcellular Location : intracellular,cytosol,

Expression : Leukocyte,Lung,Spleen,

Products Images



Immunohistochemistry analysis of paraffin-embedded human lung carcinoma, using SH2D1B Antibody. The picture on the right is blocked with the synthesized peptide.