

## GPR115 Polyclonal Antibody

|                              |   |
|------------------------------|---|
| <b>Catalog No :</b>          | YT1959  |
| <b>Reactivity :</b>          | Human;Mouse   |
| <b>Applications :</b>        | WB;IF;ELISA   |
| <b>Target :</b>              | GPR115  |
| <b>Gene Name :</b>           | GPR115  |
| <b>Protein Name :</b>        | Probable G-protein coupled receptor 115   |
| <b>Human Gene Id :</b>       | 221393  |
| <b>Human Swiss Prot No :</b> | Q8IZF3  |
| <b>Mouse Gene Id :</b>       | 78249   |
| <b>Mouse Swiss Prot No :</b> | Q9D2L6  |
| <b>Immunogen :</b>           | The antiserum was produced against synthesized peptide derived from human GPR115. AA range:641-690                    |
| <b>Specificity :</b>         | GPR115 Polyclonal Antibody detects endogenous levels of GPR115 protein.   |
| <b>Formulation :</b>         | Liquid in PBS containing 50% glycerol, 0.5% BSA and 0.02% sodium azide.   |
| <b>Source :</b>              | Polyclonal, Rabbit,IgG  |
| <b>Dilution :</b>            | WB 1:500 - 1:2000. IF 1:200 - 1:1000. ELISA: 1:10000. Not yet tested in other applications.                           |
| <b>Purification :</b>        | The antibody was affinity-purified from rabbit antiserum by affinity-chromatography using epitope-specific immunogen. |
| <b>Concentration :</b>       | 1 mg/ml   |
| <b>Storage Stability :</b>   | -15°C to -25°C/1 year(Do not lower than -25°C)  |

**Observed Band :** 82kD

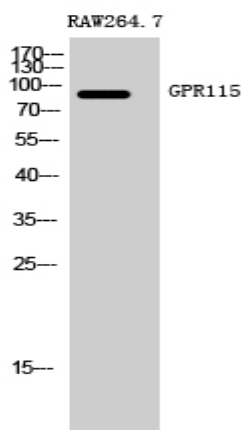
**Background :** function:Orphan receptor.,similarity:Belongs to the G-protein coupled receptor 2 family. LN-TM7 subfamily.,similarity:Contains 1 GPS domain.,

**Function :** function:Orphan receptor.,similarity:Belongs to the G-protein coupled receptor 2 family. LN-TM7 subfamily.,similarity:Contains 1 GPS domain.,

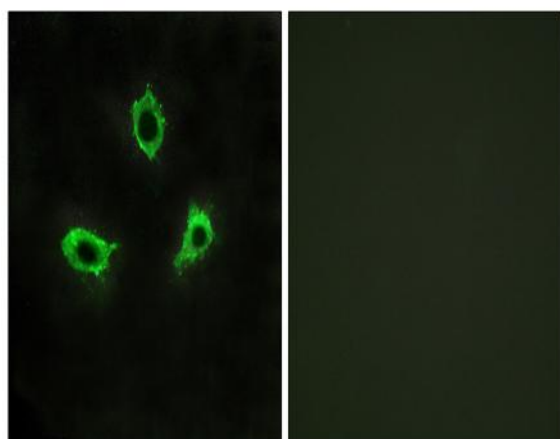
**Subcellular Location :** Membrane ; Multi-pass membrane protein .

**Expression :** Testis,

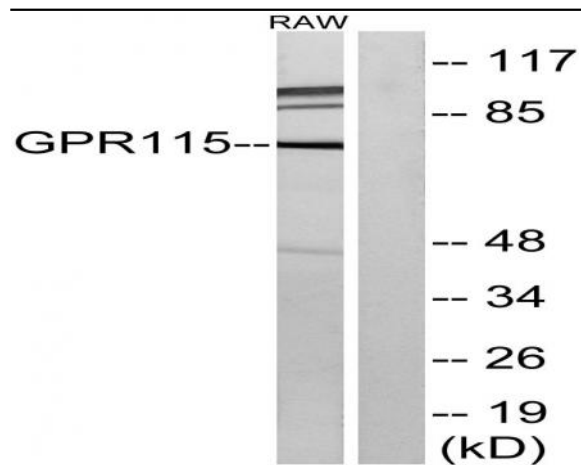
## Products Images



Western Blot analysis of RAW264.7 cells using GPR115 Polyclonal Antibody



Immunofluorescence analysis of LOVO cells, using GPR115 Antibody. The picture on the right is blocked with the synthesized peptide.



Western blot analysis of lysates from RAW264.7 cells, using GPR115 Antibody. The lane on the right is blocked with the synthesized peptide.