

EKLF/CKLF/UKLF Polyclonal Antibody

Catalog No :	YT1522
Reactivity :	Human;Mouse;Rat
Applications :	WB;IF;ELISA
Target :	EKLF/CKLF/UKLF
Gene Name :	KLF1/KLF5/KLF7
Protein Name :	Krueppel-like factor 1/Krueppel-like factor 5/Krueppel-like factor 7
Human Gene Id :	10661/688/8609
Human Swiss Prot No :	Q13351/Q13887/O75840
Mouse Gene Id :	12224/93691
Immunogen :	The antiserum was produced against synthesized peptide derived from human KLF. AA range:291-340
Specificity :	EKLF/CKLF/UKLF Polyclonal Antibody detects endogenous levels of EKLF/CKLF/UKLF protein.
Formulation :	Liquid in PBS containing 50% glycerol, 0.5% BSA and 0.02% sodium azide.
Source :	Polyclonal, Rabbit,IgG
Dilution :	WB 1:500 - 1:2000. IF 1:200 - 1:1000. ELISA: 1:20000. Not yet tested in other applications.
Purification :	The antibody was affinity-purified from rabbit antiserum by affinity-chromatography using epitope-specific immunogen.
Concentration :	1 mg/ml
Storage Stability :	-15°C to -25°C/1 year(Do not lower than -25°C)

Observed Band : 38kD(EKLF) 20kD(CKLF/UKLF)

Cell Pathway : Protein_Acetylation

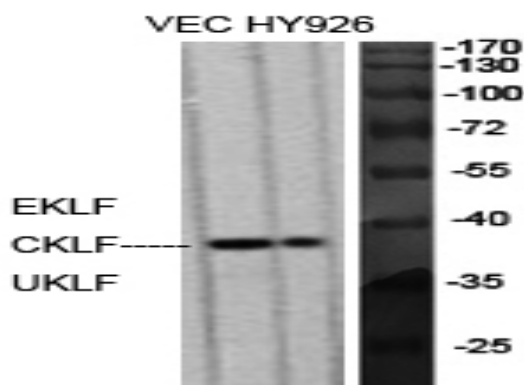
Background : This gene encodes a hematopoietic-specific transcription factor that induces high-level expression of adult beta-globin and other erythroid genes. The zinc-finger protein binds to the DNA sequence CCACACCCT found in the beta hemoglobin promoter. Heterozygous loss-of-function mutations in this gene result in the dominant In(Lu) blood phenotype. [provided by RefSeq, Oct 2009],

Function : function:Transcription regulator of erythrocyte development. Binds to the CACCC box in the beta-globin gene promoter and activates transcription. When sumoylation, acts as a Probably serves as a general switch factor for erythroid development. When sumoylated, acts as a transcriptional repressor, by promoting interaction with CDH2/MI2beta and also represses megakaryocytic differentiation.,PTM:Acetylated; can be acetylated on both Lys-274 and Lys-288. Acetylation on Lys-274 (by CBP) appears to be the major site affecting EKLF transactivation activity.,PTM:Phosphorylated primarily on serine residues in the transactivation domain. Phosphorylation on Thr-23 is critical for the transactivation activity.,PTM:Sumoylated; sumoylation, promoted by PIAS1, leads to repression of megakaryocyte differentiation. Also promotes the interaction with the CDH4 subunit of the NuRD repression complex.,simila

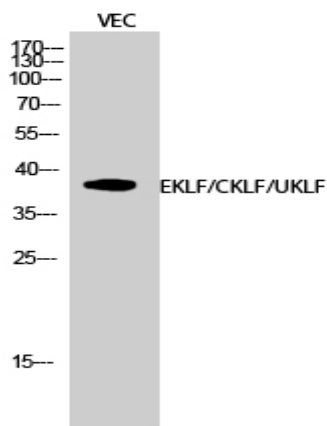
Subcellular Location : Nucleus . Colocalizes with SUMO1 in nuclear speckles. .

Expression : Expression restricted to adult bone marrow and fetal liver. Not expressed in myeloid nor lymphoid cell lines.

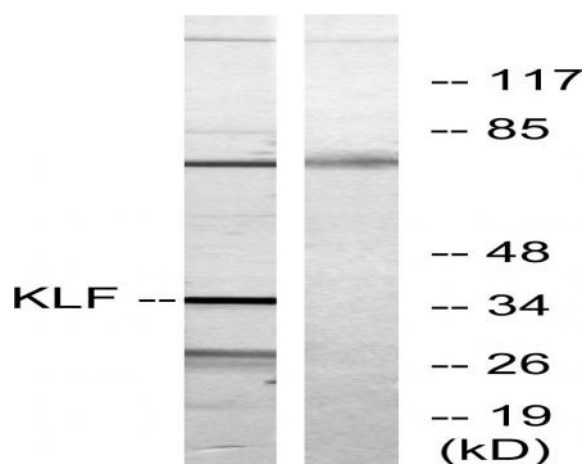
Products Images



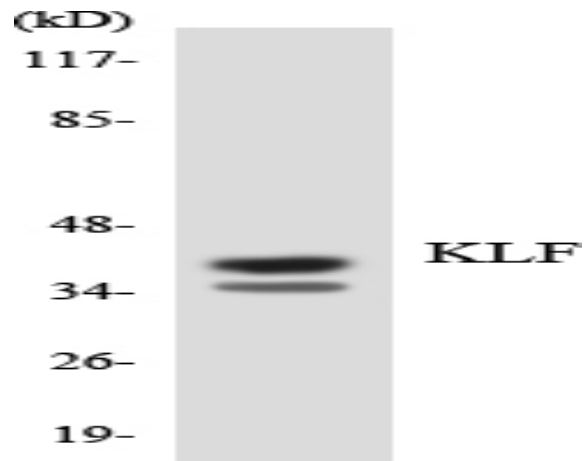
Western Blot analysis of various cells using EKLF/CKLF/UKLF Polyclonal Antibody diluted at 1:500 cells nucleus extracted by Minute TM Cytoplasmic and Nuclear Fractionation kit (SC-003, Inventbiotech, MN, USA).



Western Blot analysis of VEC cells using EKLf/CKLf/UKLf Polyclonal Antibody diluted at 1:500 cells nucleus extracted by Minute TM Cytoplasmic and Nuclear Fractionation kit (SC-003, Inventbiotech, MN, USA).



Western blot analysis of lysates from Jurkat cells, treated with serum 20% 15', using KLF Antibody. The lane on the right is blocked with the synthesized peptide.



Western blot analysis of the lysates from K562 cells using KLF antibody.