

GADD 45γ Polyclonal Antibody

Catalog No :	YT1832
Reactivity :	Human;Mouse;Rat
Applications :	WB;IHC;IF;ELISA
Target :	GADD 45γ
Fields :	>>MAPK signaling pathway;>>NF-kappa B signaling pathway;>>FoxO signaling pathway;>>Cell cycle;>>p53 signaling pathway;>>Apoptosis;>>Cellular senescence;>>Epstein-Barr virus infection;>>Pathways in cancer;>>Transcriptional misregulation in cancer;>>Colorectal cancer;>>Pancreatic cancer;>>Endometrial cancer;>>Glioma;>>Thyroid cancer;>>Basal cell carcinoma;>>Melanoma;>>Chronic myeloid leukemia;>>Small cell lung cancer;>>Non-small cell lung cancer;>>Breast cancer;>>Hepatocellular carcinoma;>>Gastric cancer
Gene Name :	GADD45G
Protein Name :	Growth arrest and DNA damage-inducible protein GADD45 gamma
Human Gene Id :	10912
Human Swiss Prot No :	O95257
Mouse Swiss Prot No :	Q9Z111
Rat Gene Id :	291005
Rat Swiss Prot No :	Q9WTQ7
Immunogen :	The antiserum was produced against synthesized peptide derived from human GA45G. AA range:101-150
Specificity :	GADD 45γ Polyclonal Antibody detects endogenous levels of GADD 45γ protein.
Formulation :	Liquid in PBS containing 50% glycerol, 0.5% BSA and 0.02% sodium azide. Polyclonal, Rabbit,IgG

Dilution: WB 1:500 - 1:2000. IHC 1:100 - 1:300. IF 1:200 - 1:1000. ELISA: 1:5000. Not yet tested in other applications.

Purification : The antibody was affinity-purified from rabbit antiserum by affinity-chromatography using epitope-specific immunogen.

Concentration : 1 mg/ml

Storage Stability : -15°C to -25°C/1 year(Do not lower than -25°C)

Observed Band : 19kD

Cell Pathway : MAPK_ERK_Growth;MAPK_G_Protein;Cell_Cycle_G1S;Cell_Cycle_G2M_DNA;p53;

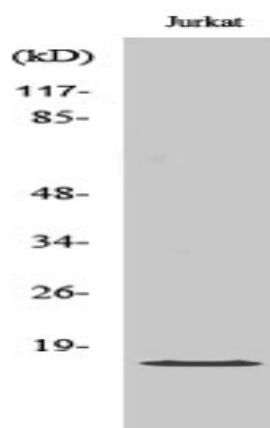
Background : This gene is a member of a group of genes whose transcript levels are increased following stressful growth arrest conditions and treatment with DNA-damaging agents. The protein encoded by this gene responds to environmental stresses by mediating activation of the p38/JNK pathway via MTK1/MEKK4 kinase. The GADD45G is highly expressed in placenta. [provided by RefSeq, Jul 2008],

Function : function:Involved in the regulation of growth and apoptosis. Mediates activation of stress-responsive MTK1/MEKK4 MAPKKK.,similarity:Belongs to the GADD45 family.,subunit:Interacts with GADD45GIP1.,

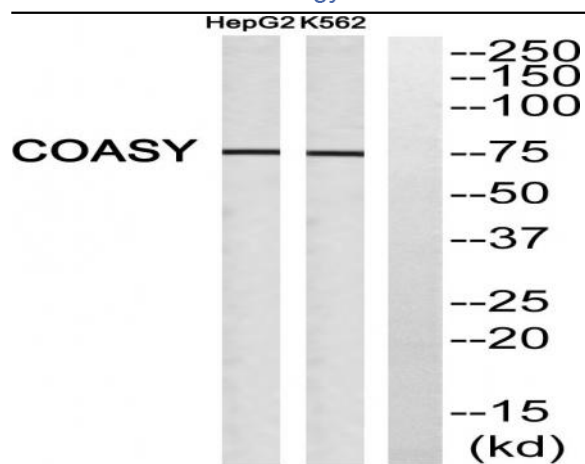
Subcellular Location : nucleus,cytoplasm,

Expression : Brain,Colon carcinoma,Lung,Placenta,

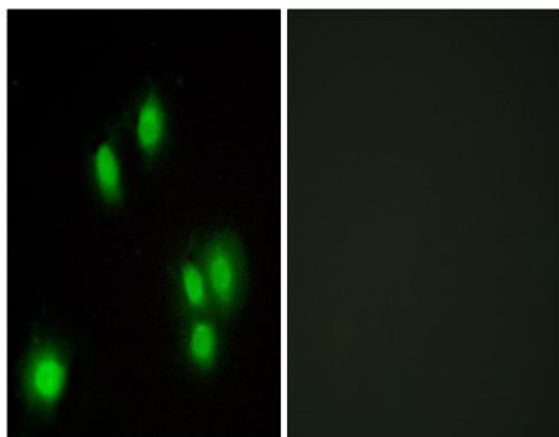
Products Images



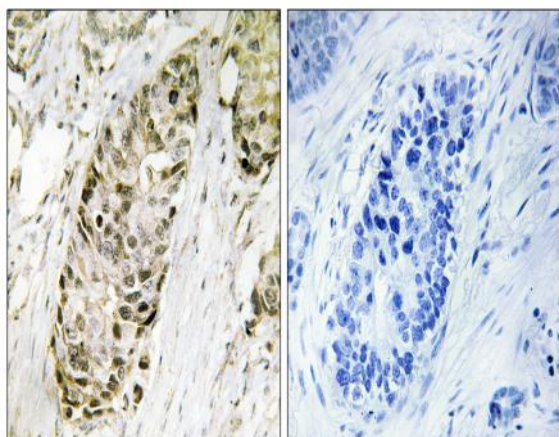
Western Blot analysis of various cells using GADD 45γ Polyclonal Antibody



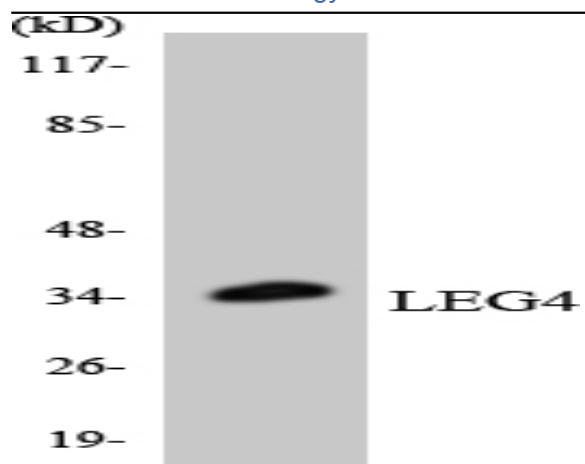
Western blot analysis of GA45G Antibody. The lane on the right is blocked with the GA45G peptide.



Immunofluorescence analysis of A549 cells, using GA45G Antibody. The picture on the right is blocked with the synthesized peptide.



Immunohistochemistry analysis of paraffin-embedded human lung carcinoma tissue, using GA45G Antibody. The picture on the right is blocked with the synthesized peptide.



Western blot analysis of the lysates from HeLa cells using LEG4 antibody.