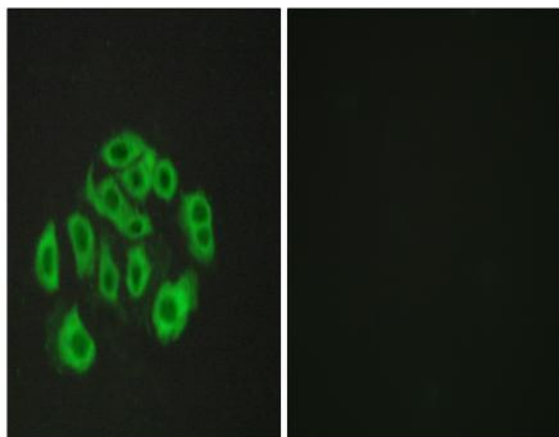


Endomucin Polyclonal Antibody

Catalog No :	YT1557
Reactivity :	Human;Mouse;Rat
Applications :	IF;ELISA
Target :	Endomucin
Gene Name :	EMCN
Protein Name :	Endomucin
Human Gene Id :	51705
Human Swiss Prot No :	Q9ULC0
Mouse Gene Id :	59308
Mouse Swiss Prot No :	Q9R0H2
Rat Gene Id :	295490
Rat Swiss Prot No :	Q6AY82
Immunogen :	The antiserum was produced against synthesized peptide derived from human Mucin-14. AA range:201-250
Specificity :	Endomucin Polyclonal Antibody detects endogenous levels of Endomucin protein.
Formulation :	Liquid in PBS containing 50% glycerol, 0.5% BSA and 0.02% sodium azide.
Source :	Polyclonal, Rabbit,IgG
Dilution :	IF 1:200 - 1:1000. ELISA: 1:5000. Not yet tested in other applications.
Purification :	The antibody was affinity-purified from rabbit antiserum by affinity-chromatography using epitope-specific immunogen.

Concentration :	1 mg/ml
Storage Stability :	-15°C to -25°C/1 year(Do not lower than -25°C)
Molecularweight :	27kD
Background :	endomucin(EMCN) Homo sapiens EMCN is a mucin-like sialoglycoprotein that interferes with the assembly of focal adhesion complexes and inhibits interaction between cells and the extracellular matrix (Kinoshita et al., 2001 [PubMed 11418125]).[supplied by OMIM, Mar 2008],
Function :	function:Endothelial sialomucin, also called endomucin or mucin-like sialoglycoprotein, which interferes with the assembly of focal adhesion complexes and inhibits interaction between cells and the extracellular matrix.,PTM:Highly O-glycosylated. Sialic acid-rich glycoprotein.,subcellular location:Consistently localized to the plasma membrane and less abundantly to Golgi-like perinuclear stacks.,tissue specificity:Expressed in heart, kidney and lung.,
Subcellular Location :	[Isoform 1]: Cell membrane; Single-pass type I membrane protein. Membrane; Single-pass type I membrane protein. Consistently localized to the plasma membrane and less abundantly to Golgi-like perinuclear stacks.; [Isoform 2]: Secreted .
Expression :	Expressed in heart, kidney and lung.

Products Images



Immunofluorescence analysis of HepG2 cells, using Mucin-14 Antibody. The picture on the right is blocked with the synthesized peptide.