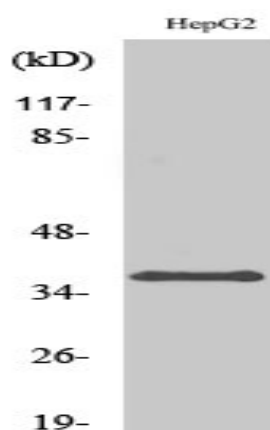


## Ephrin-A3 Polyclonal Antibody

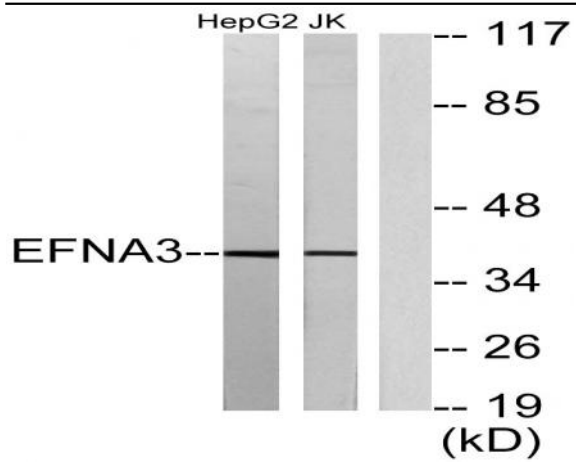
<b>Catalog No :</b>	YT1591
<b>Reactivity :</b>	Human;Mouse;Rat
<b>Applications :</b>	WB;IHC;IF;ELISA
<b>Target :</b>	Ephrin-A3
<b>Fields :</b>	>>MAPK signaling pathway;>>Ras signaling pathway;>>Rap1 signaling pathway;>>PI3K-Akt signaling pathway;>>Axon guidance;>>MicroRNAs in cancer
<b>Gene Name :</b>	EFNA3
<b>Protein Name :</b>	Ephrin-A3
<b>Human Gene Id :</b>	1944
<b>Human Swiss Prot No :</b>	P52797
<b>Mouse Gene Id :</b>	13638
<b>Mouse Swiss Prot No :</b>	O08545
<b>Immunogen :</b>	The antiserum was produced against synthesized peptide derived from human EFNA3. AA range:161-210
<b>Specificity :</b>	Ephrin-A3 Polyclonal Antibody detects endogenous levels of Ephrin-A3 protein.
<b>Formulation :</b>	Liquid in PBS containing 50% glycerol, 0.5% BSA and 0.02% sodium azide.
<b>Source :</b>	Polyclonal, Rabbit,IgG
<b>Dilution :</b>	WB 1:500 - 1:2000. IHC 1:100 - 1:300. IF 1:200 - 1:1000. ELISA: 1:10000. Not yet tested in other applications.
<b>Purification :</b>	The antibody was affinity-purified from rabbit antiserum by affinity-chromatography using epitope-specific immunogen.

<b>Concentration :</b>	1 mg/ml
<b>Storage Stability :</b>	-15°C to -25°C/1 year(Do not lower than -25°C)
<b>Observed Band :</b>	38kD
<b>Cell Pathway :</b>	Axon guidance;
<b>Background :</b>	This gene encodes a member of the ephrin (EPH) family. The ephrins and EPH-related receptors comprise the largest subfamily of receptor protein-tyrosine kinases and have been implicated in mediating developmental events, especially in the nervous system and in erythropoiesis. Based on their structures and sequence relationships, ephrins are divided into the ephrin-A (EFNA) class, which are anchored to the membrane by a glycosylphosphatidylinositol linkage, and the ephrin-B (EFNB) class, which are transmembrane proteins. This gene encodes an EFNA class ephrin. [provided by RefSeq, Jul 2008],
<b>Function :</b>	similarity:Belongs to the ephrin family.,tissue specificity:Expressed in brain, skeletal muscle, spleen, thymus, prostate, testis, ovary, small intestine, and peripheral blood leukocytes.,
<b>Subcellular Location :</b>	Cell membrane; Lipid-anchor, GPI-anchor.
<b>Expression :</b>	Expressed in brain, skeletal muscle, spleen, thymus, prostate, testis, ovary, small intestine, and peripheral blood leukocytes.

## Products Images



Western Blot analysis of various cells using Ephrin-A3 Polyclonal Antibody



Western blot analysis of lysates from HepG2 and Jurkat cells, using EFNA3 Antibody. The lane on the right is blocked with the synthesized peptide.