

## GluR- $\delta$ 2 Polyclonal Antibody

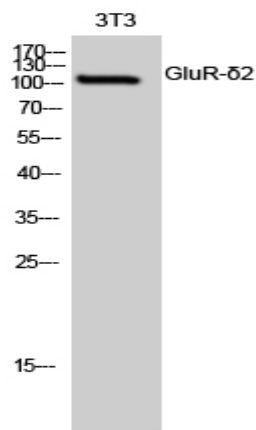
<b>Catalog No :</b>	YT1927
<b>Reactivity :</b>	Human;Mouse;Rat
<b>Applications :</b>	WB;IF;ELISA
<b>Target :</b>	GRID2
<b>Fields :</b>	>>Neuroactive ligand-receptor interaction;>>Long-term depression
<b>Gene Name :</b>	GRID2
<b>Protein Name :</b>	Glutamate receptor delta-2 subunit
<b>Human Gene Id :</b>	2895
<b>Human Swiss Prot No :</b>	O43424
<b>Mouse Gene Id :</b>	14804
<b>Mouse Swiss Prot No :</b>	Q61625
<b>Rat Gene Id :</b>	79220
<b>Rat Swiss Prot No :</b>	Q63226
<b>Immunogen :</b>	The antiserum was produced against synthesized peptide derived from human GRID2. AA range:831-880
<b>Specificity :</b>	GluR- $\delta$ 2 Polyclonal Antibody detects endogenous levels of GluR- $\delta$ 2 protein.
<b>Formulation :</b>	Liquid in PBS containing 50% glycerol, 0.5% BSA and 0.02% sodium azide.
<b>Source :</b>	Polyclonal, Rabbit,IgG
<b>Dilution :</b>	WB 1:500 - 1:2000. IF 1:200 - 1:1000. ELISA: 1:20000. Not yet tested in other applications.

---

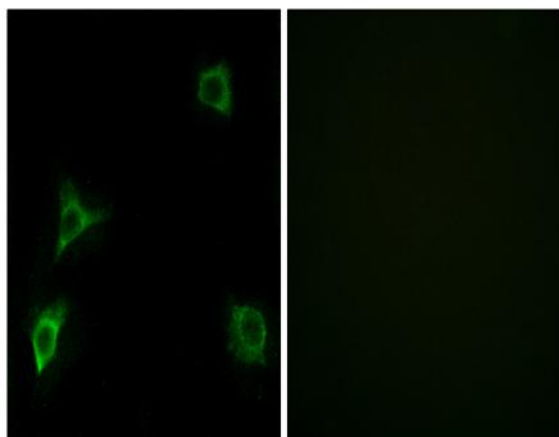
<b>Purification :</b>	The antibody was affinity-purified from rabbit antiserum by affinity-chromatography using epitope-specific immunogen.
<b>Concentration :</b>	1 mg/ml
<b>Storage Stability :</b>	-15°C to -25°C/1 year(Do not lower than -25°C)
<b>Observed Band :</b>	113kD
<b>Cell Pathway :</b>	Neuroactive ligand-receptor interaction;Long-term depression;
<b>Background :</b>	<p>The protein encoded by this gene is a member of the family of ionotropic glutamate receptors which are the predominant excitatory neurotransmitter receptors in the mammalian brain. The encoded protein is a multi-pass membrane protein that is expressed selectively in cerebellar Purkinje cells. A point mutation in the mouse ortholog, associated with the phenotype named 'lurcher', in the heterozygous state leads to ataxia resulting from selective, cell-autonomous apoptosis of cerebellar Purkinje cells during postnatal development. Mice homozygous for this mutation die shortly after birth from massive loss of mid- and hindbrain neurons during late embryogenesis. This protein also plays a role in synapse organization between parallel fibers and Purkinje cells. Alternate splicing results in multiple transcript variants encoding distinct isoforms. Mutations in this</p>
<b>Function :</b>	<p>domain:The PDZ-binding motif mediates interaction with GOPC.,function:Receptor for glutamate. L-glutamate acts as an excitatory neurotransmitter at many synapses in the central nervous system. The postsynaptic actions of Glu are mediated by a variety of receptors that are named according to their selective agonists.,similarity:Belongs to the glutamate-gated ion channel (TC 1.A.10) family.,subunit:Interacts with AIP1, AP4M1, BECN1, GOPC, GRID2IP, SHANK1 and SHANK2.,</p>
<b>Subcellular Location :</b>	Cell membrane ; Multi-pass membrane protein . Cell junction, synapse, postsynaptic cell membrane ; Multi-pass membrane protein .
<b>Expression :</b>	Brain,Cerebellum,PCR rescued clones,

---

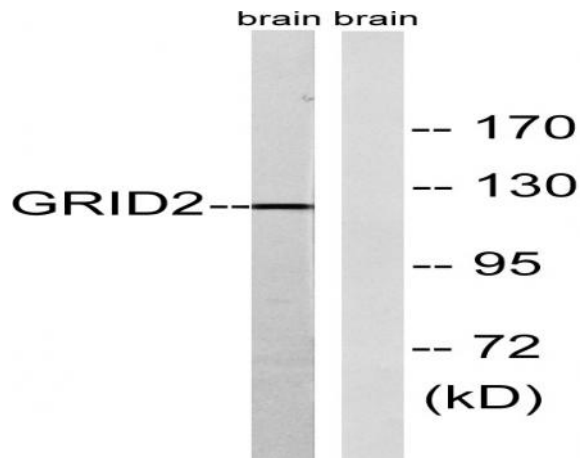
## Products Images



Western Blot analysis of 3T3 cells using GluR- $\delta$ 2 Polyclonal Antibody



Immunofluorescence analysis of HUVEC cells, using GRID2 Antibody. The picture on the right is blocked with the synthesized peptide.



Western blot analysis of lysates from mouse brain, using GRID2 Antibody. The lane on the right is blocked with the synthesized peptide.